



Fairway, Leicester, LE8 0LB

▲  
**ANDREW  
GRANGER & CO**  
└─┘

Part of

**SHELDON  
BOSLEY  
KNIGHT**

LAND AND  
PROPERTY  
PROFESSIONALS

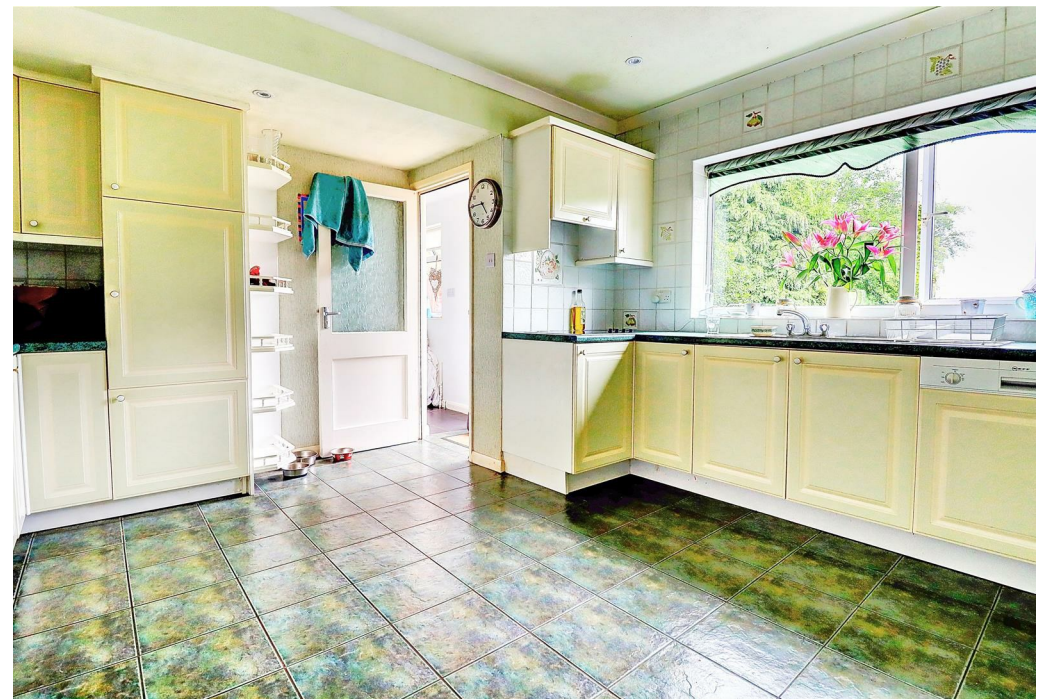


# Property Description

\*\*\* AVAILABLE NOW \*\*\* This spacious detached home, located within the highly regarded and much sought after area of Kibworth Beauchamp. In brief, the home offers four double bedrooms to the first floor along with bathroom. To the ground floor are reception rooms including large lounge/diner, sun/reception room, Breakfast kitchen, ground floor shower room, utility room and large dining room/fifth bedroom. Further benefits include that stunning garden space, raised patio and large frontage plus garage, the property also has a beautiful garden with views to countryside at the rear. EPC D. Council Tax E. Unfurnished. Pets considered £25pcm extra. Rent £1,750pcm. Deposit £2,019. Available immediately on a fixed term twelve month contract with the option to renew.











## Key Features

- \*\*\* AVAILABLE NOW \*\*\*
- Four/five bedrooms
- Two receptions
- Breakfast Kitchen
- Ground floor Shower room
- First floor bathroom
- Beautiful gardens & Views. Pets considered £25pcm extra
- EPC D. Council Tax E
- Rent £1,750pcm. Deposit £2,019
- Available immediately on a fixed term twelve month contract with the option to renew

**£1,750 PCM**