



Launde Park, Little Bowden, Market Harborough, LE16 8BH

**ANDREW
GRANGER & CO**

Part of

**SHELDON
BOSLEY
KNIGHT**

LAND AND
PROPERTY
PROFESSIONALS

Property Description

A most attractive four bedroomed Victorian detached family house of character set well back from the road within a highly sought after area of Little Bowden, handy for the railway station and nearby shopping facilities just to the south east of the thriving town of Market Harborough.





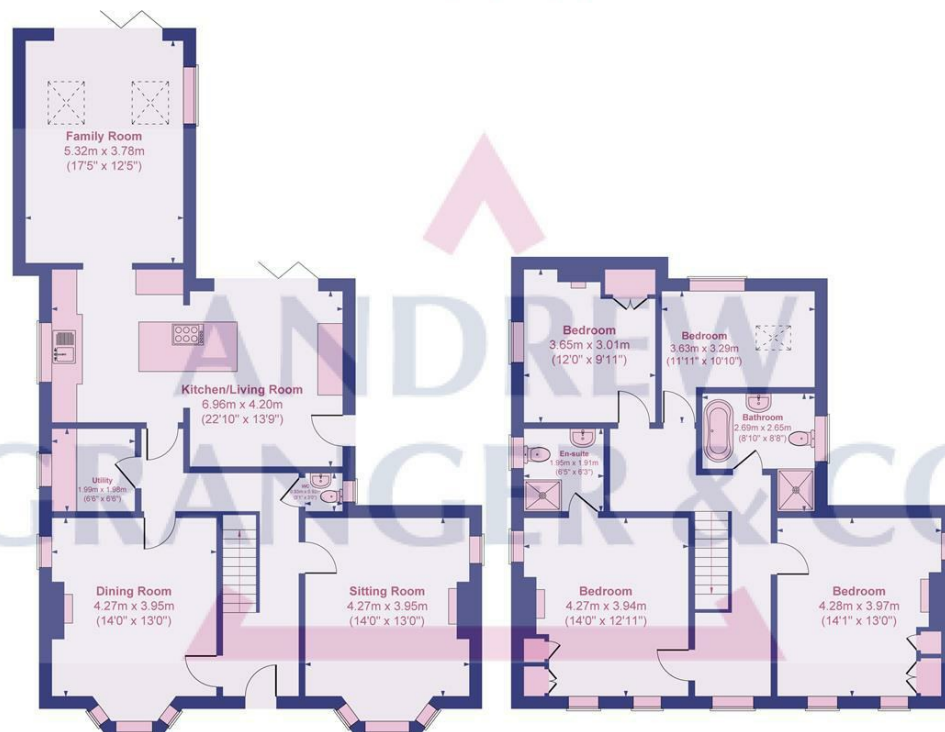
Key Features

- Stunning Victorian detached family house
- Beautifully appointed and extended
- Many period features
- 3 reception rooms
- Superb living kitchen
- Principal bedroom with en suite
- 3 further bedrooms and family bathroom
- Extensive gardens
- Off road parking
- No chain!

Price Guide
£795,000



Approximate Gross Internal Area
186.5 sq. m. (2008 sq. ft.)



Not to scale for layout reference only. All Measurements are Approximate Produced by As
built Energy Surveys for Andrew Granger & Co orders@asbuiltenergysurveys.co.uk



EPC Rating - D

Tenure - Freehold

Council Tax Band - E

Local Authority
Harborough

We routinely refer clients to both our recommended Legal Firm and a panel of Financial Services Providers. It is your decision whether you choose to deal with these companies. In making that decision, you should know that we receive a referral fee



**To view this property please contact our Market Harborough (Sales) office
on 01858 431315**

**ANDREW
GRANGER & CO**

Part of
**SHELDON
BOSLEY
KNIGHT**

LAND AND
PROPERTY
PROFESSIONALS