



Hartland Drive, Market Harborough, LE16 8JA



Part of  
**SHELDON  
BOSLEY  
KNIGHT**  
LAND AND  
PROPERTY  
PROFESSIONALS



# Property Description

Discover this newly decorated two-bedroom home with fresh carpets throughout. The ground floor features a convenient WC, a kitchen with appliances, and a bright living room with double doors leading to a spacious garden. Upstairs offers two double bedrooms and a family bathroom. Convenient off-road parking for two cars. EPC C. Council Tax B. Unfurnished. Rent £925pcm. Deposit £1,067. Available immediately on a fixed term six month contract with the option to renew.

## Important Tenancy Information:

- Holding deposit: 1 week's rent
- Full deposit: 5 weeks rent
- In-person viewing required before application is issued
- Holding deposit applied to first month's rent on successful referencing

## Non-refundable Criteria:

- False/misleading information provided
- Failure to complete/sign agreement within 14 days
- Failing Right to Rent Checks
- Withdrawal from process after application submission

Information regarding tenant fees is available on our website. If you have any questions please contact the office directly.







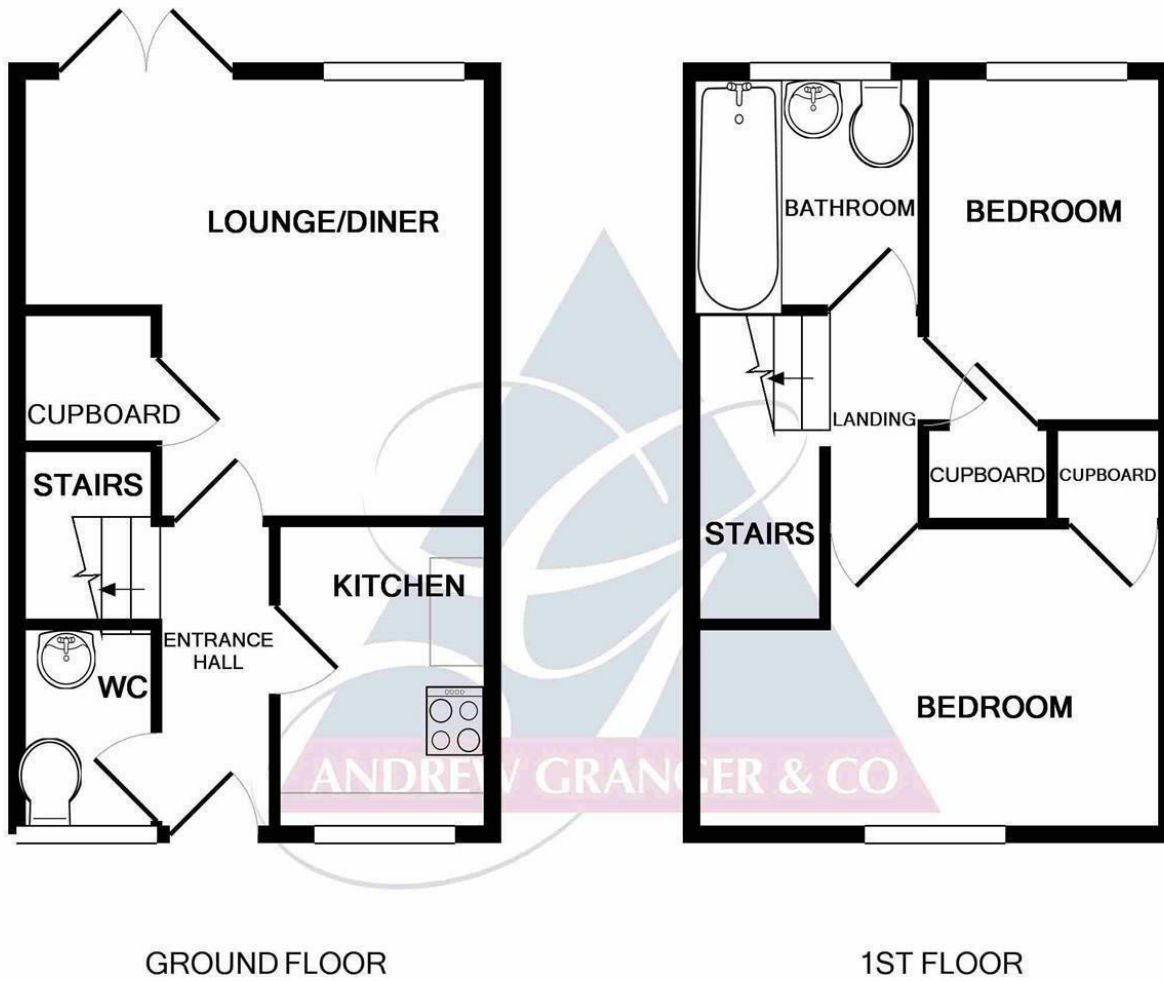
## Key Features

- Newly decorated and carpeted throughout
- Lounge
- Kitchen to include appliances
- Two double bedrooms
- Family bathroom
- Large garden
- ORP for two cars
- EPC C. Council Tax B
- Rent £925pcm. Deposit £1,067
- Available immediately on a fixed term six month contract with the option to renew

**PCM**  
**£925 PCM**







Made with Metropix ©2018



EPC Rating - D

Tenure -

Council Tax Band - B

Local Authority  
Harborough District Council

We routinely refer clients to both our recommended Legal Firm and a panel of Financial Services Providers. It is your decision whether you choose to deal with these companies. In making that decision, you should know that we receive a referral fee





To view this property please contact our Market Harborough office on 01858 431315



Part of  
**SHELDON  
BOSLEY  
KNIGHT**  
LAND AND  
PROPERTY  
PROFESSIONALS