



Station Road, Kettering, NN14 2RL



Part of
**SHELDON
BOSLEY
KNIGHT**
LAND AND
PROPERTY
PROFESSIONALS

Property Description

A three bedroom Victorian terrace situated in Desborough. The accommodation comprises of an entrance hall, open plan living room and dining room with a modern kitchen. Stairs lead to two double bedrooms and a further single bedroom and family bathroom. There is a garden to the rear. No parking. EPC D. Council Tax A. Unfurnished. Rent £825pcm. Deposit £951. Accepts pets £25pcm extra. Available immediately on a fixed term six month contract with the option to renew.

Important Tenancy Information:

- Holding deposit: 1 week's rent
- Full deposit: 5 weeks rent
- In-person viewing required before application is issued
- Holding deposit applied to first month's rent on successful referencing

Non-refundable Criteria:

- False/misleading information provided
- Failure to complete/sign agreement within 14 days
- Failing Right to Rent Checks
- Withdrawal from process after application submission

Information regarding tenant fees is available on our website. If you have any questions please contact the office directly.

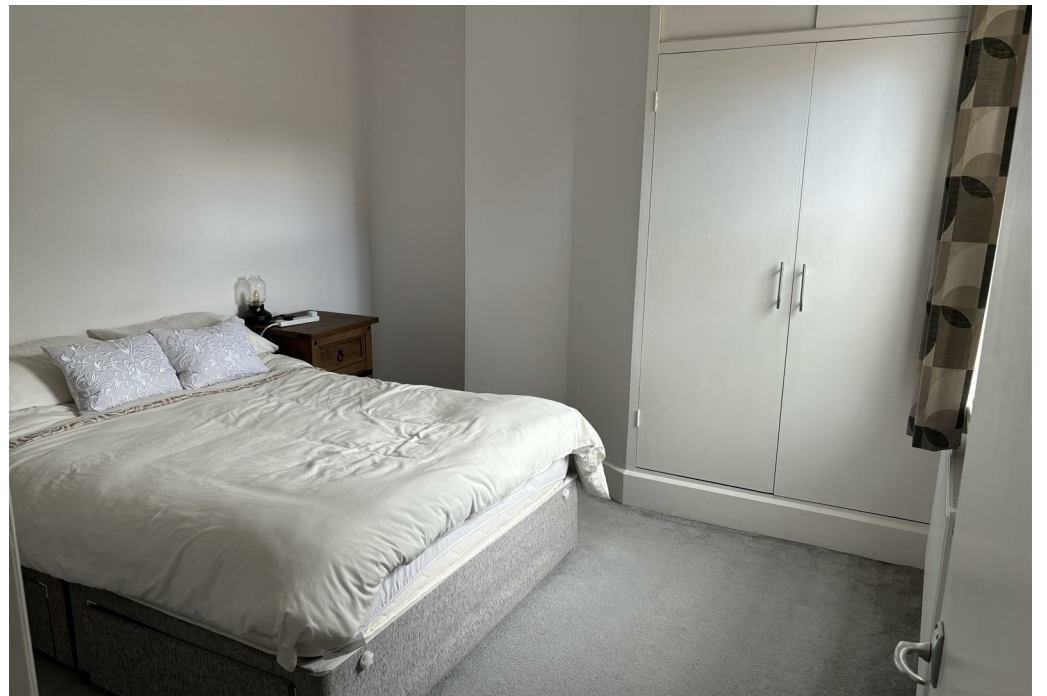




Key Features

- Three bedrooms
- Open plan lounge/diner
- Modern kitchen
- Family bathroom
- Garden
- No parking
- Unfurnished. Rent £825pcm. Deposit £951.
- EPC D. Council Tax A.
- Accepts pets £25pcm extra.
- Available immediately on a fixed term six month contract with the option to renew.

PCM
£825 PCM





EPC Rating - D

Tenure -

Council Tax Band - A

Local Authority
Kettering Borough Council

We routinely refer clients to both our recommended Legal Firm and a panel of Financial Services Providers. It is your decision whether you choose to deal with these companies. In making that decision, you should know that we receive a referral fee



To view this property please contact our Market Harborough office on 01858 431315



Part of
**SHELDON
BOSLEY
KNIGHT**
LAND AND
PROPERTY
PROFESSIONALS