



Long Brimley Close, Market Harborough, LE16 7XJ



Part of
**SHELDON
BOSLEY
KNIGHT**
LAND AND
PROPERTY
PROFESSIONALS

Property Description

A four bedroomed detached property situated on this popular development on the south side of Market Harborough town centre. The accommodation briefly comprises of an entrance hall, cloaks/wc, lounge with separate dining room and kitchen. To the first floor there are four bedrooms, the principal bedroom with en-suite and family bathroom. Externally, the property has car standing and a garage which has been divided by the vendor, into two useful storage areas with a false wall, front and rear gardens.

The property occupies a position on the well regarded Ashley Way development, which boasts good access to the mainline railway station to London St Pancras. The town has an excellent range of shopping and supermarket facilities, further schools, cafes, bars, restaurants, a theatre and leisure centre. There are many scenic walks nearby including the tow path to the canal.



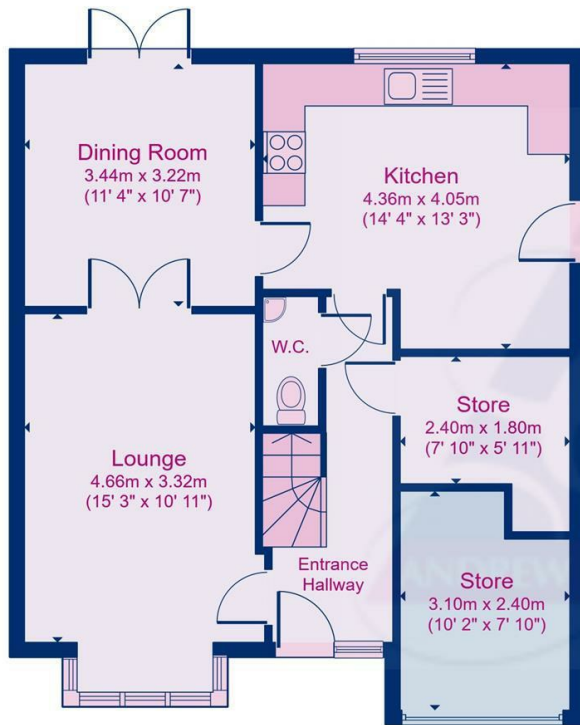


Key Features

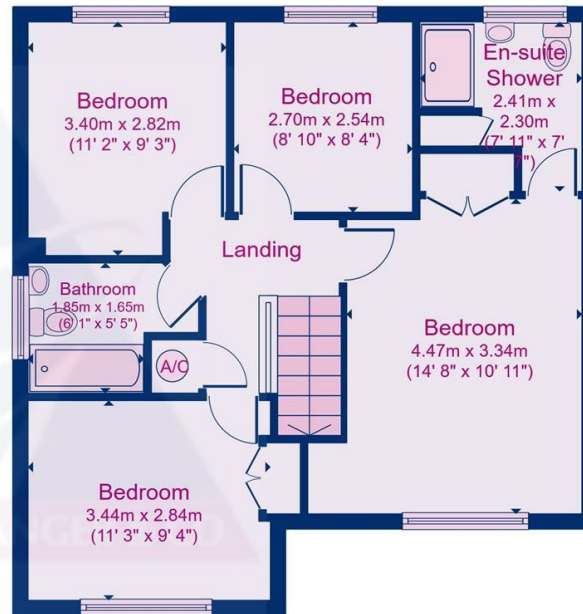
- Detached Family Home
- Entrance Hallway Cloaks w/c,
- Lounge with Separate Dining Room
- Kitchen With Built In Oven & Hob
- Principle Bedroom with En-suite Shower Room
- Three Further Bedrooms
- Family Bathroom
- Car Standing, Storage Area (former garage)
- Front and Rear gardens
- No Upward Chain

Price Guide
£435,000





Floor area 59.7 sq.m. (643 sq.ft.) approx (Excluding External Store)



Floor area 59.0 sq.m. (635 sq.ft.) approx

Floor plans are for identification purposes only. All measurements are approximate.
Created using Vision Publisher™



EPC Rating - D

Tenure - Freehold

Council Tax Band - E

Local Authority
Harborough District Council

We routinely refer clients to both our recommended Legal Firm and a panel of Financial Services Providers. It is your decision whether you choose to deal with these companies. In making that decision, you should know that we receive a referral fee



To view this property please contact our Market Harborough office on 01858 431315



Part of
**SHELDON
BOSLEY
KNIGHT**
LAND AND
PROPERTY
PROFESSIONALS