



Highcroft, Husbands Bosworth, LE17 6LF



Part of
**SHELDON
BOSLEY
KNIGHT**
LAND AND
PROPERTY
PROFESSIONALS

Property Description

A well appointed four bedroomed detached family home enjoying countryside views to the rear, occupying a plot of around 0.16 acre.

The property offers flexible accommodation across two floors and briefly comprises, entrance porch which leads through to an entrance hallway with cloaks/wc off, lounge which enjoys views over the front garden, this in turn leads through to the dining room with bay window and direct access to the breakfast kitchen which is fitted with a good range of units and integrated appliances. There is a connecting walkway between the house and garage that gives direct access to the garden.

To the first floor, there are four bedrooms, (guest bedroom with en-suite shower room), and a family bathroom.

Externally, the front garden is well maintained and stocked with a variety of mature shrubs and trees. There is a driveway to the side with vehicular standing for up to four cars, and a garage with office/study area attached which is approached from the rear garden which is laid mainly to lawn with well stocked borders and patio area.

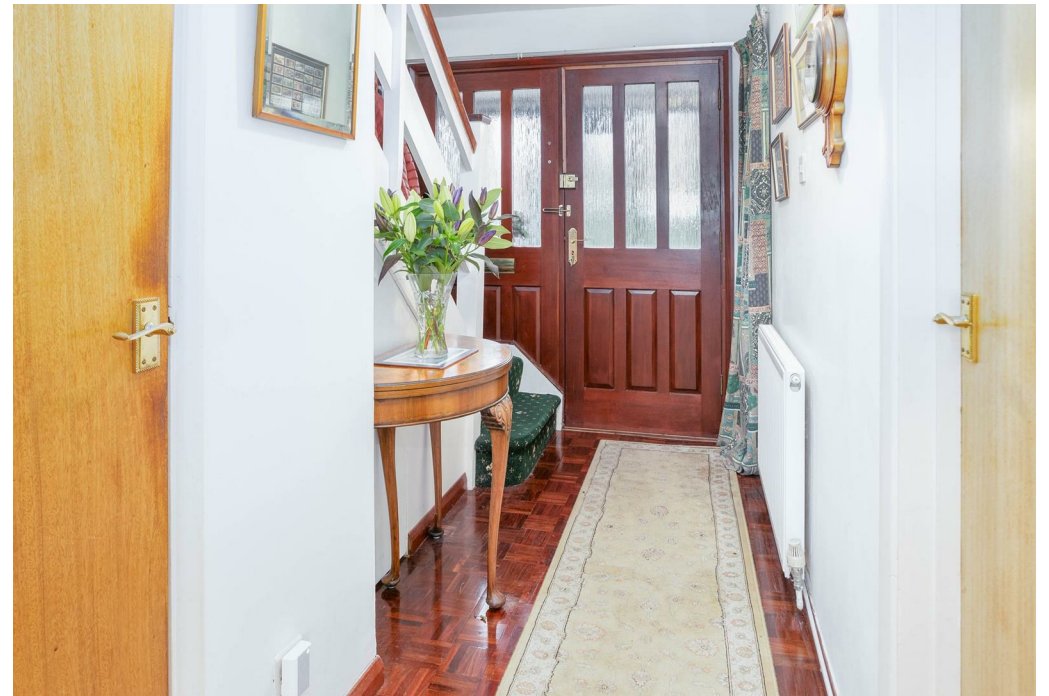




Key Features

- Two Reception Rooms
- Breakfast Kitchen
- Four Bedrooms (Guest Bedroom With En-Suite Shower Room)
- Family Bathroom
- Car Standing
- Front & Rear Gardens
- Countryside Views
- Garage & Office/Study

Price Guide
£485,000





Ground Floor

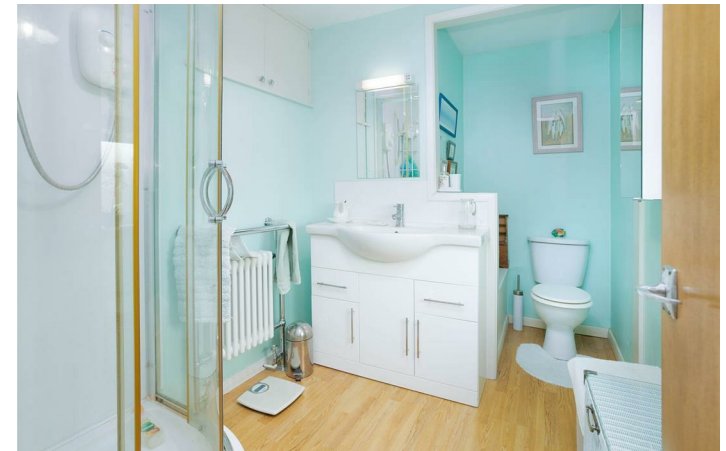
Floor area 68.7 sq.m. (740 sq.ft.) approx (Excluding Garage/Office/Study)



First Floor

Floor area 64.7 sq.m. (696 sq.ft.) approx

Floor plans are for identification purposes only. All measurements are approximate.
Created using Vision Publisher™



EPC Rating - D

Tenure - Freehold

Council Tax Band - E

Local Authority
Harborough District Council



To view this property please contact our Market Harborough office on 01858 431315



Part of
**SHELDON
BOSLEY
KNIGHT**
LAND AND
PROPERTY
PROFESSIONALS