



Monroe Close, Market Harborough, LE16 7QN



Part of  
**SHELDON  
BOSLEY  
KNIGHT**  
LAND AND  
PROPERTY  
PROFESSIONALS

# Property Description

A four bedroomed detached David Wilson Homes property situated in this popular development on the north side of Market Harborough town centre. The accommodation briefly comprises of an entrance hall, cloakroom, study, lounge with formal dining room, well appointed kitchen with a utility room off.

To the first floor the principal bedroom enjoys an en-suite shower room, there are three further bedrooms and a family bathroom.

Externally, approached via a shared driveway with neighbouring properties there is a car standing area and a detached double garage. The rear garden is laid to lawn with patio area and enclosed by timber fencing.

Market Harborough has an excellent range of local shops and supermarkets, bars, restaurants, a theatre and leisure centre. The town is well catered with local schools for all ages. For the commuter, there are mainline rail services to London St Pancras in about an hour, with links to the Eurostar service, and the nearby motorways include the M1 accessible at Junction 20, with the A14 lying to the south.

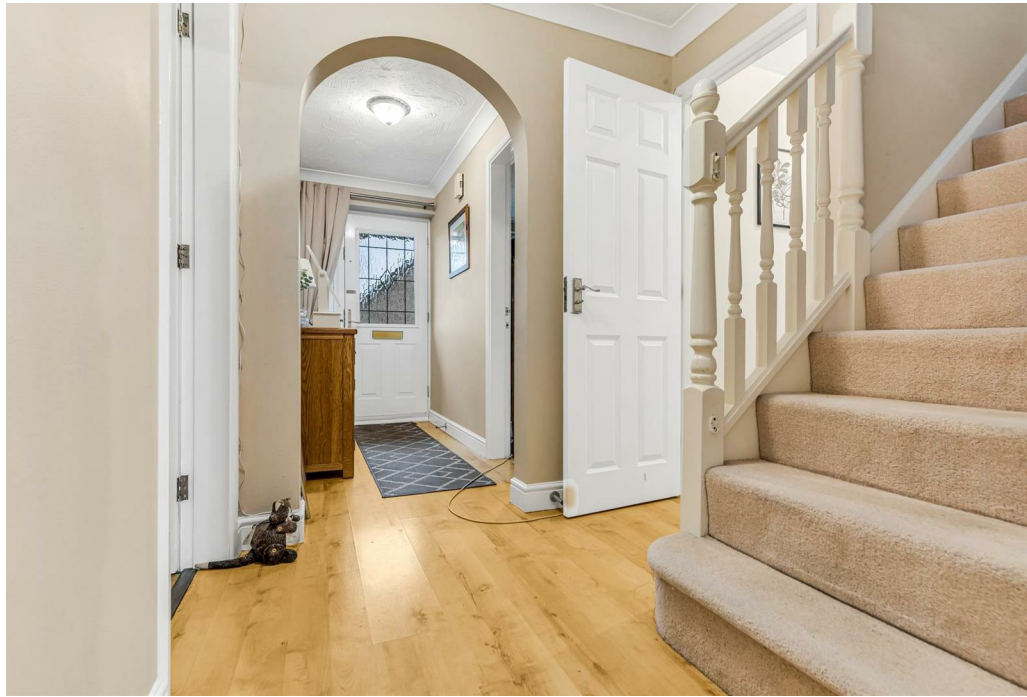


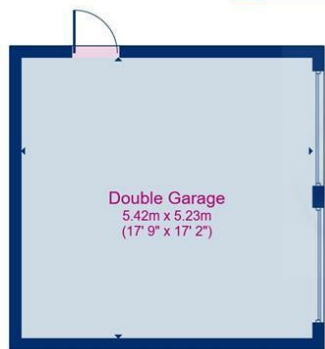
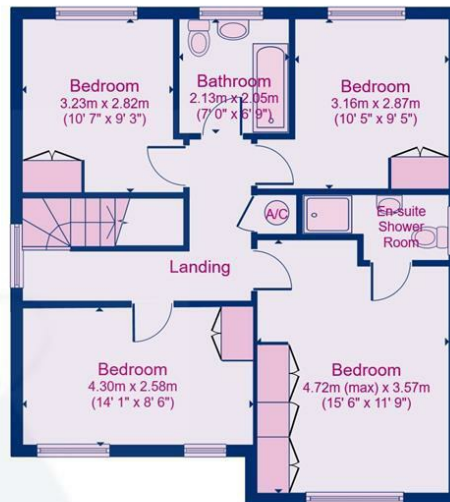
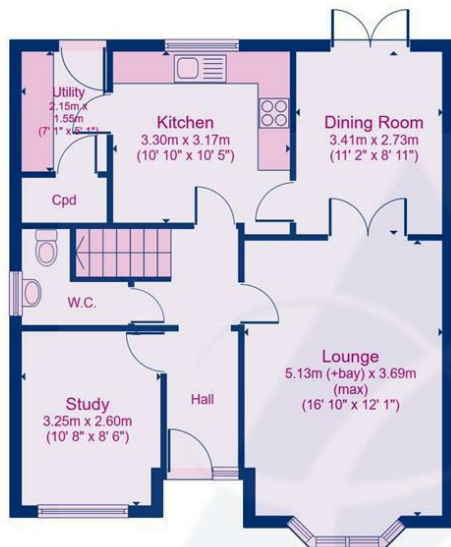


## Key Features

- Popular Location on North Side of Town
- Entrance Hallway, Lounge, Dining Room & Study
- Kitchen, Utility Room
- Principal Bedroom with En-Suite
- Three Further Bedrooms
- Family Bathroom
- Double Detached Garage
- Car Standing
- Enclosed rear garden

**£545,000**





### Ground Floor

Floor area 66.0 sq.m. (711 sq.ft.) approx (Excluding Garage)

### First Floor

Floor area 66.0 sq.m. (710 sq.ft.) approx

Floor plans are for identification purposes only. All measurements are approximate.  
Created using Vision Publisher™



EPC Rating - C

Tenure - Freehold

Council Tax Band - E

Local Authority  
Harborough District Council

We routinely refer clients to both our recommended Legal Firm and a panel of Financial Services Providers. It is your decision whether you choose to deal with these companies. In making that decision, you should know that we receive a referral fee



To view this property please contact our Market Harborough office on 01858 431315



Part of  
**SHELDON  
BOSLEY  
KNIGHT**  
LAND AND  
PROPERTY  
PROFESSIONALS