



West End, Welford, NN6 6HJ



Part of
**SHELDON
BOSLEY
KNIGHT**
LAND AND
PROPERTY
PROFESSIONALS

Property Description

A delightful 4 bedroomed Grade II listed detached thatched cottage which retains a wealth of charm and character with exposed wall and ceiling timbers and inglenook. Dating back to the late 17th Century with interlinking attached accommodation (currently two flats) which could be converted to provide an excellent sized family home or alternatively suitable for dual generation accommodation. (subject to the necessary consents).

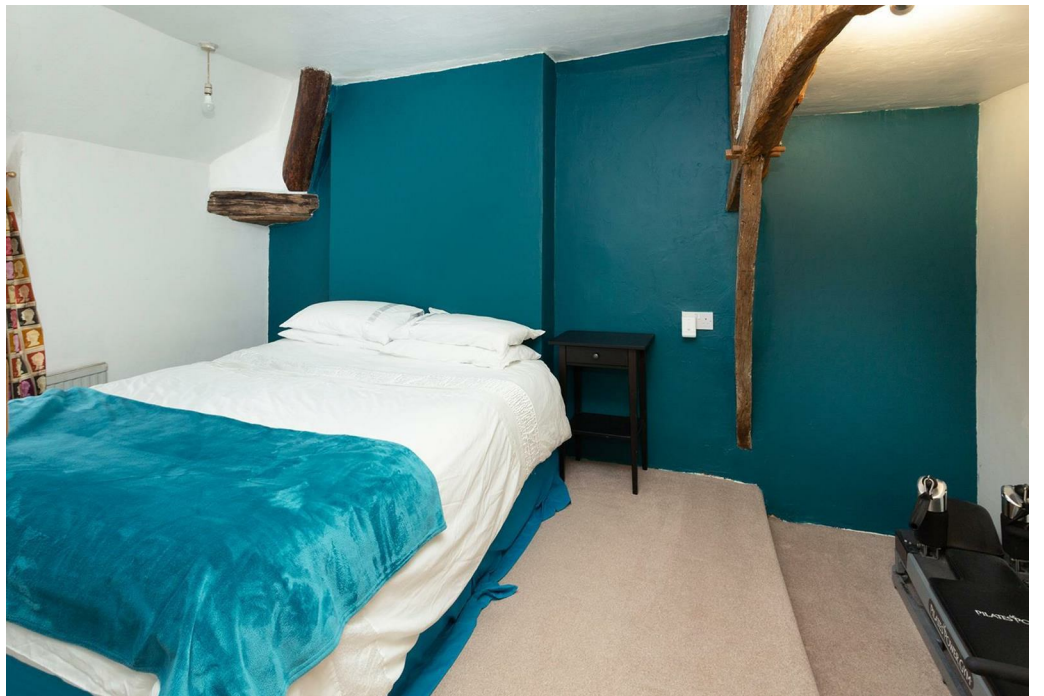




Key Features

- Grade II Listed
- Wealth of Charm & Character
- Potential to Convert
- Requires modernisation & Improvement

Price
£515,000





Ground Floor

Floor Area (Gross Internal) 132.1 sq.m. (1,422 sq.ft.) approx



First Floor

Floor Area (Gross Internal) 128.2 sq.m. (1,380 sq.ft.) approx

Created using Vision Publisher™



EPC Rating -

Tenure - Freehold

Council Tax Band - D

Local Authority
Daventry



To view this property please contact our Market Harborough office on 01858 431315



Part of
**SHELDON
BOSLEY
KNIGHT**
LAND AND
PROPERTY
PROFESSIONALS