



The Green, Great Bowden, Leicestershire, LE16 7EU



Part of
**SHELDON
BOSLEY
KNIGHT**
LAND AND
PROPERTY
PROFESSIONALS

Property Description

A beautifully refurbished and deceptively spacious two bedroomed Victorian cottage of character overlooking The Green and historic church within the heart of the highly sought after south Leicestershire village of Great Bowden, handy for amenities in the thriving town of Market Harborough, with rail links in about an hour to London St Pancras.

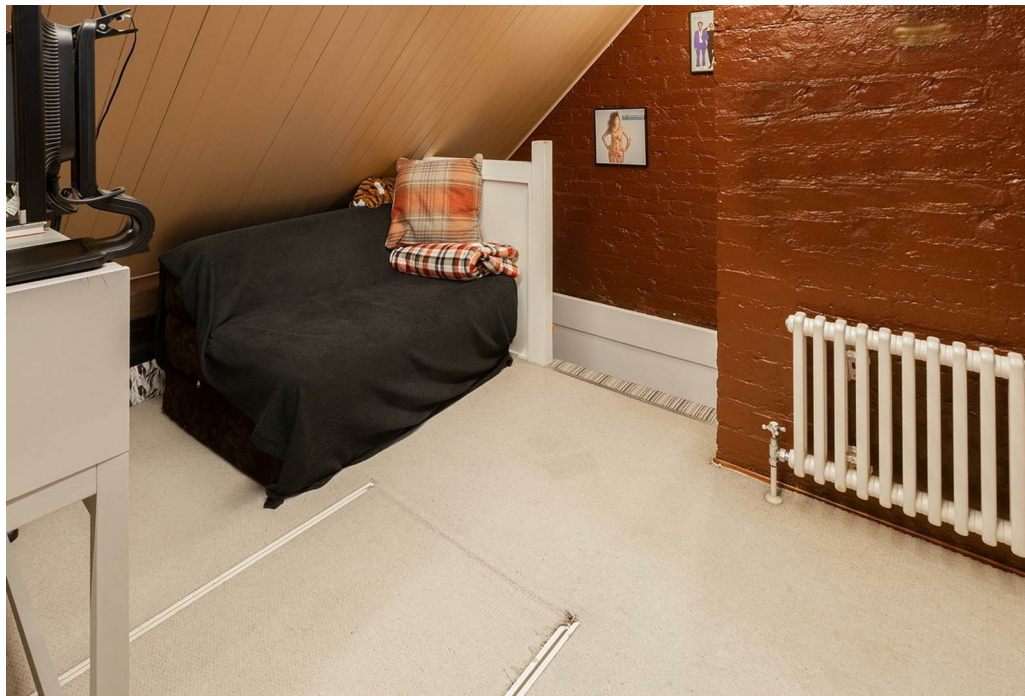




Key Features

- Beautifully presented throughout
- Refurbished & deceptively spacious cottage
- 2 reception rooms
- 2 double bedrooms
- Heart of Conservation Village
- Staircase to spacious attic

Price Guide
£375,000





Ground Floor

Floor Area (Gross Internal) 39.1 sq.m. (421 sq.ft.) approx

First Floor

Floor Area (Gross Internal) 38.1 sq.m. (410 sq.ft.) approx

Second Floor

Floor Area (Gross Internal) 17.2 sq.m. (185 sq.ft.) approx

Created using Vision Publisher™



EPC Rating - D

Tenure - Freehold

Council Tax Band - C

Local Authority
Harborough District Council



To view this property please contact our Market Harborough office on 01858 431315



Part of
**SHELDON
BOSLEY
KNIGHT**
LAND AND
PROPERTY
PROFESSIONALS