



The Square, Countesthorpe, LE8 5RN

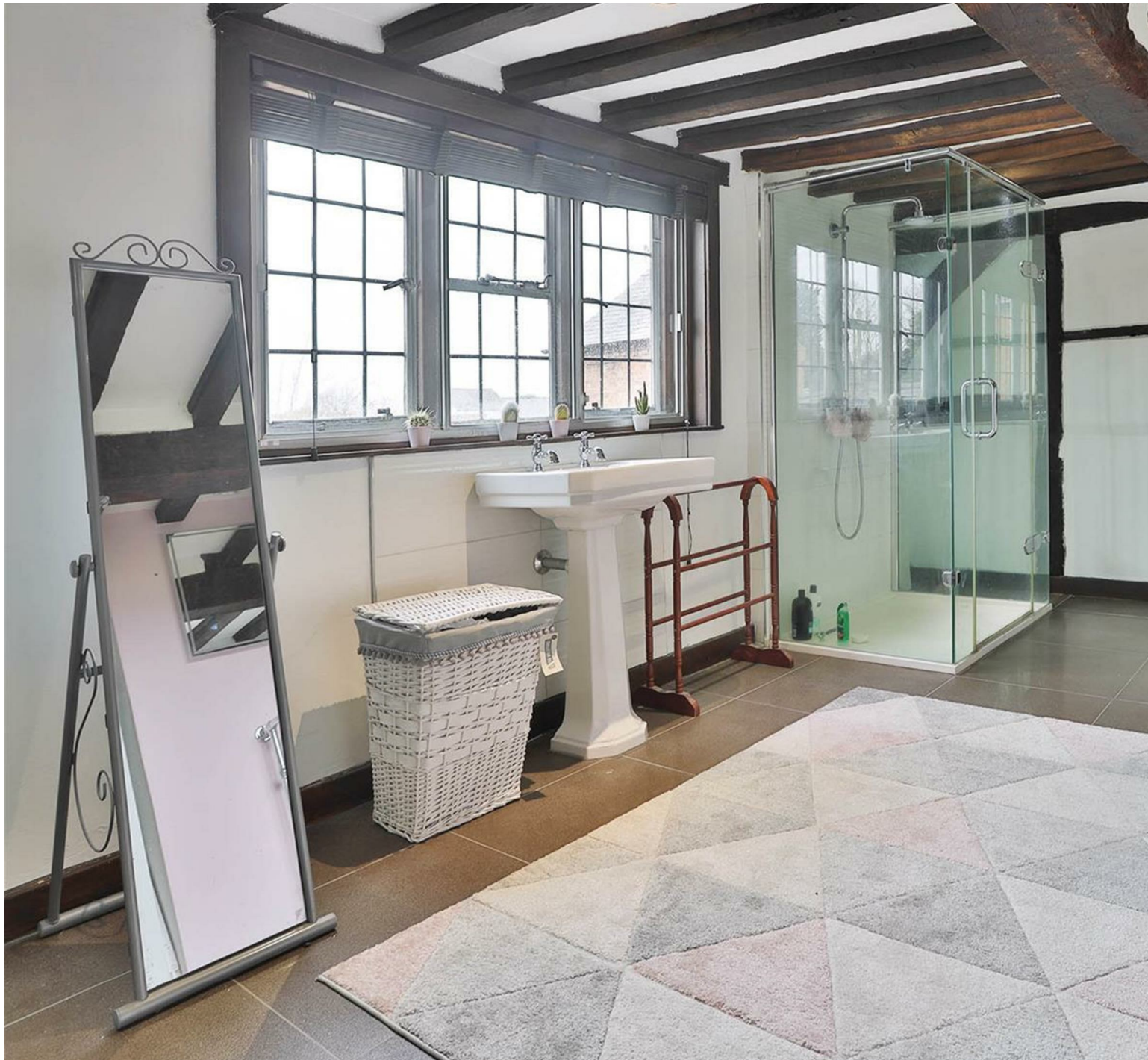


Part of
**SHELDON
BOSLEY
KNIGHT**
LAND AND
PROPERTY
PROFESSIONALS

Property Description

An amazing 5 bedroomed Grade II listed detached residence of charm and character, alongside contemporary living. Parts of the Manor House dates back to the late 15th century and has retained lots of the original features, including beamed ceilings, fireplaces and the housekeepers staircase and useful outbuildings.

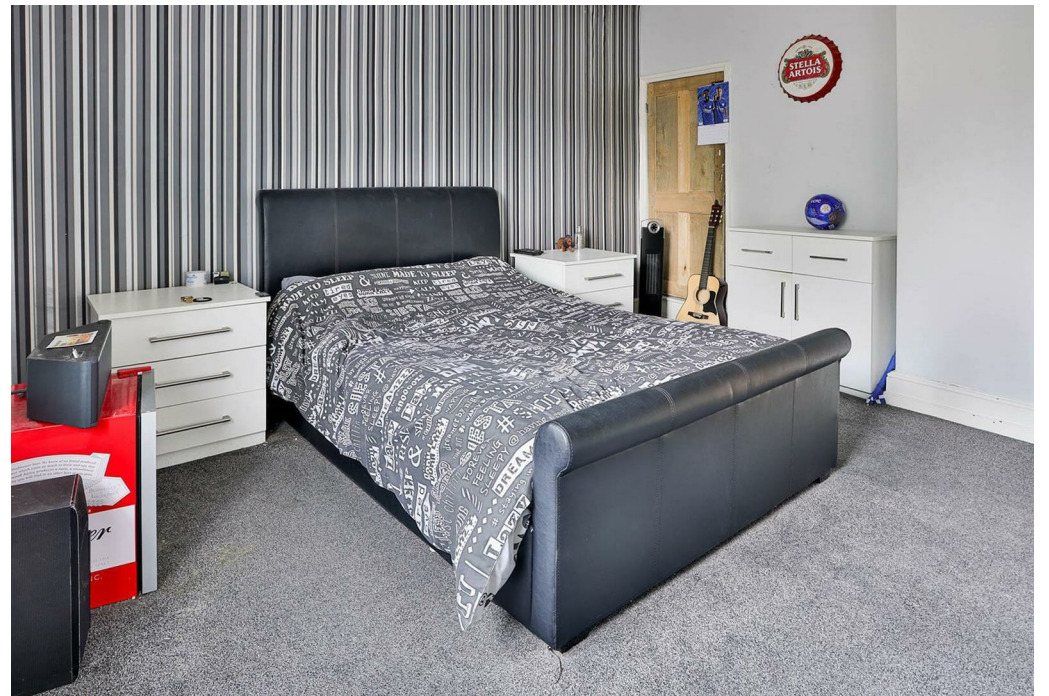




Key Features

- Grade II listed Property, Formerly a Manor House
- Wealth of Original Features and Cellar
- Four Reception Rooms, Dining Kitchen
- Five Bedrooms, Ensuite to master, Showerroom & Bathroom
- Generous Garden, Brick Store, Hobbies/Home Office

Price Guide
£650,000





Ground Floor



First Floor

Created using Vision Publisher™



EPC Rating -

Tenure - Freehold

Council Tax Band - G

Local Authority
Harborough



To view this property please contact our Market Harborough office on 01858 431315



Part of
**SHELDON
BOSLEY
KNIGHT**
LAND AND
PROPERTY
PROFESSIONALS