



Foxglove Drive, Swinford, Lutterworth, LE17 6EN



Part of
**SHELDON
BOSLEY
KNIGHT**
LAND AND
PROPERTY
PROFESSIONALS

Property Description

READY FOR OCCUPATION!! - a new detached four bedroom home with open plan kitchen/dining, large living room an en-suite to bed 1, and family bathroom with Single garage. This stunning new home located in the idyllic Leicestershire countryside has just been finished to a high specification by the reputable local builders, Williams homes on an exclusive development of just twenty-one new properties set in a delightful village location on Rugby Road, Swinford, near Lutterworth, in South Leicestershire.

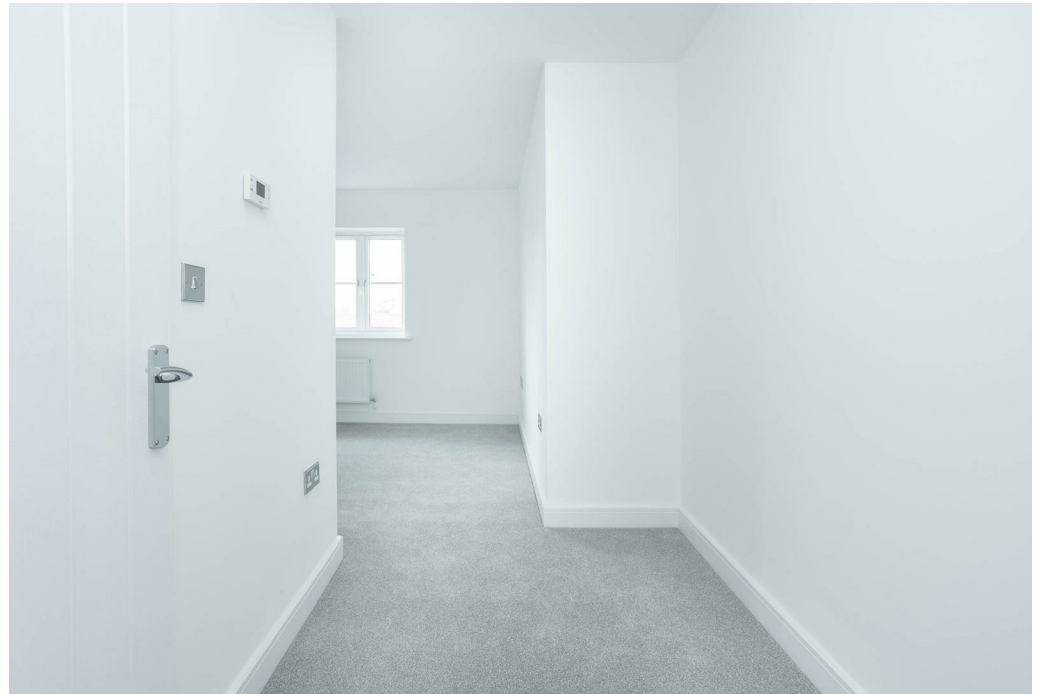


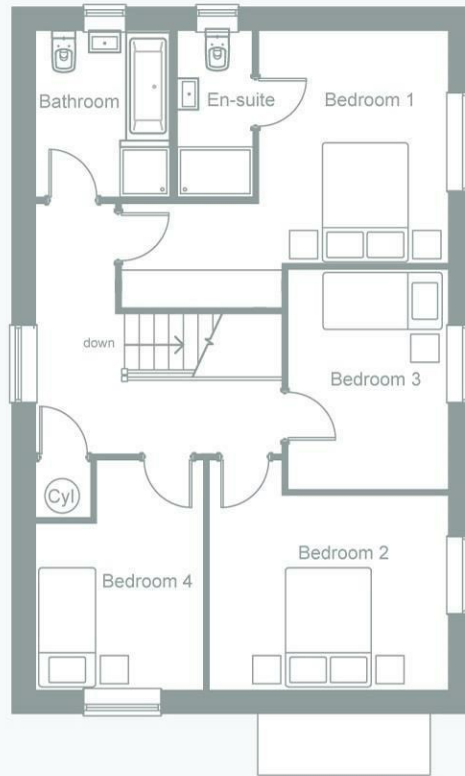
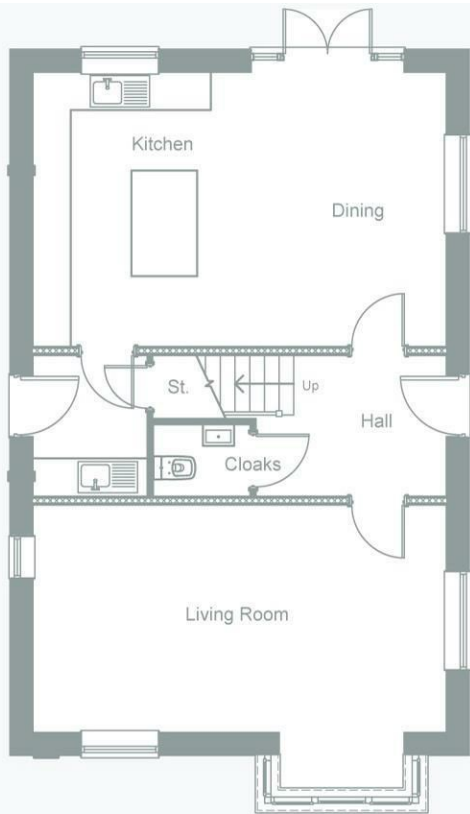


Key Features

- New Detached Family House
- Built by Willilams Homes
- Spacious Living Room
- Superb Dining Kitchen
- Energy saving Air source heating
- Principal Bedroom with En-Suite
- 3 Further Bedrooms
- Family Bathroom
- Single Garage and 2 Parking Spaces
- Good Sized Plot, Pleasant Views

£449,950





EPC Rating - B

Tenure - Freehold

Council Tax Band -

Local Authority

We routinely refer clients to both our recommended Legal Firm and a panel of Financial Services Providers. It is your decision whether you choose to deal with these companies. In making that decision, you should know that we receive a referral fee



To view this property please contact our Market Harborough office on 01858 431315



Part of
**SHELDON
BOSLEY
KNIGHT**
LAND AND
PROPERTY
PROFESSIONALS