



Rugby Road, Swinford, nr Lutterworth, LE17 6BW



Part of
**SHELDON
BOSLEY
KNIGHT**
LAND AND
PROPERTY
PROFESSIONALS

Property Description

READY FOR OCCUPATION - a new 3 bedrooed semi-detached house with hall, cloakroom/wc, kitchen/diner, and spacious living room, landing, principal bedroom with an en- suite, gardens with parking for 2 cars. This stunning new home with idyllic countryside views has just been finished by reputable local builders, Williams Homes on an exclusive development of just 21 new properties set in a delightful village location on Rugby Road, Swinford, near Lutterworth, in South Leicestershire.

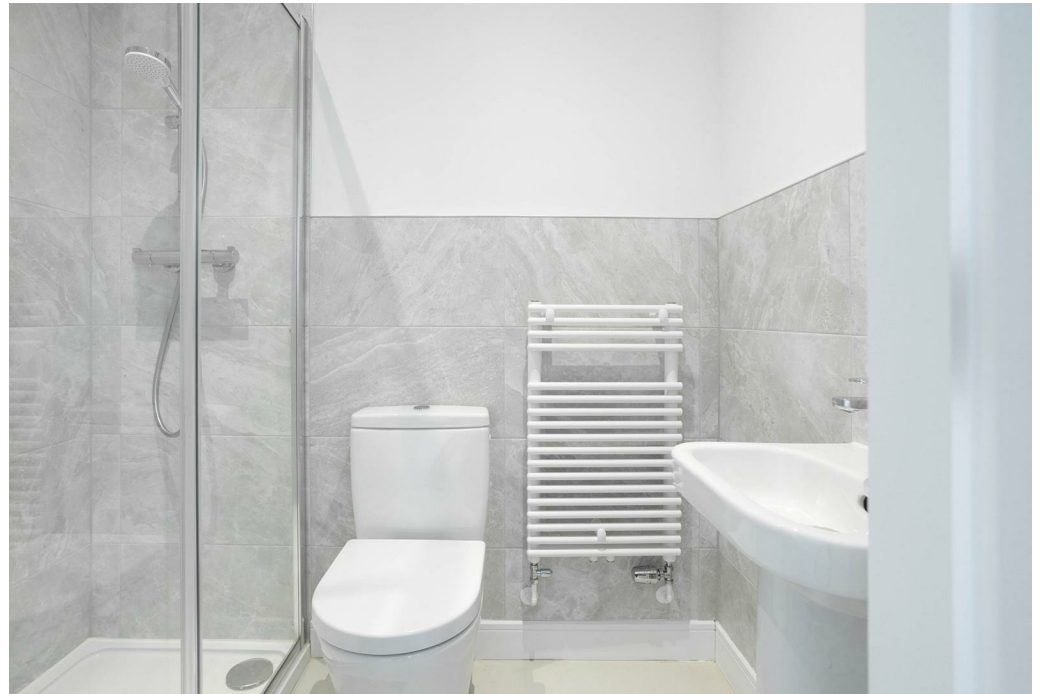
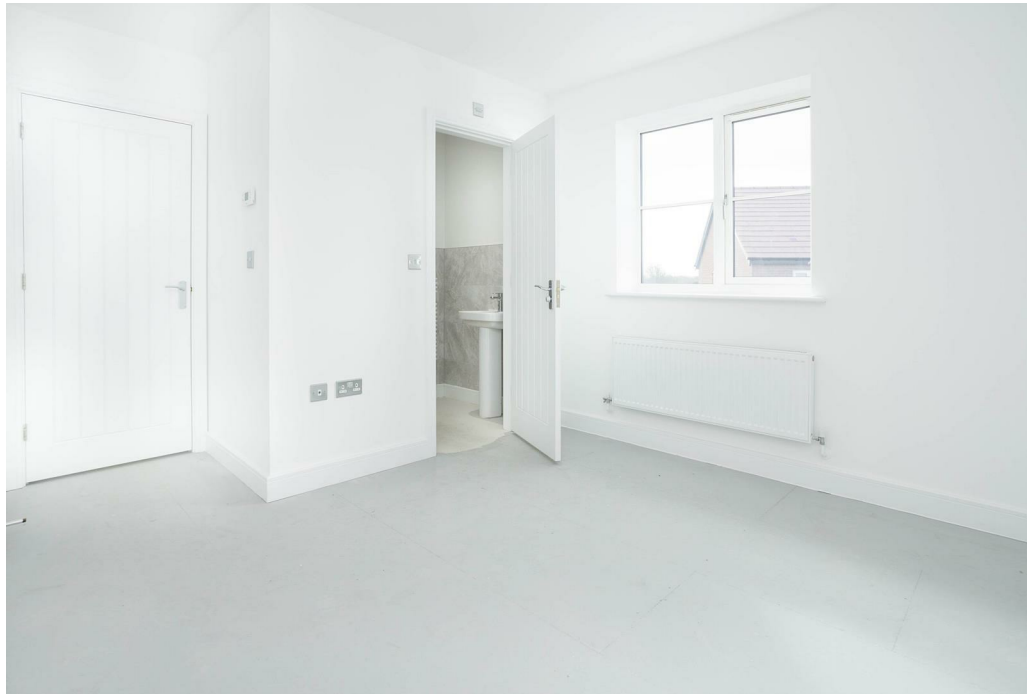


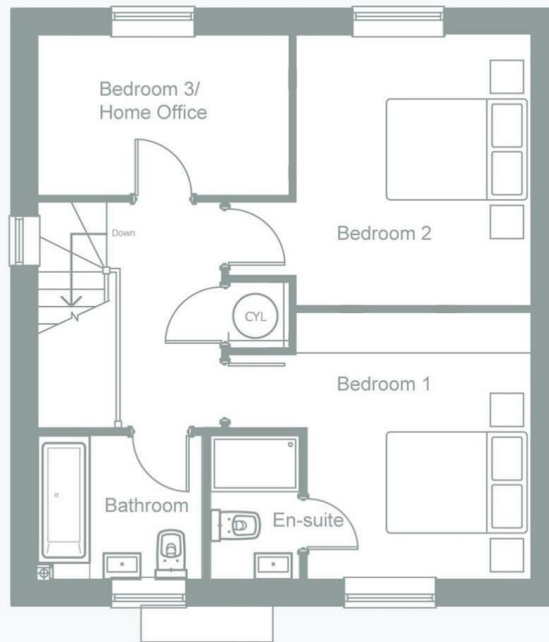
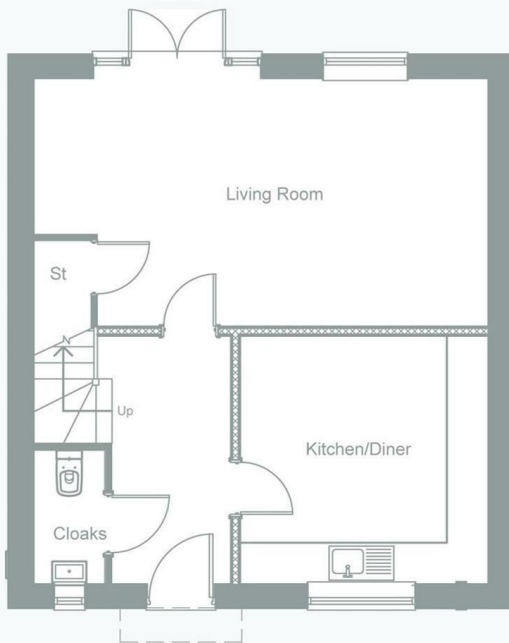


Key Features

- New 3 bed Semi-Detached Family Home
- Built By Williams Homes
- Living Room
- Kitchen/Diner
- Principal Bedroom With En-Suite
- Two Further Bedrooms
- Energy Saving Air Source Heating
- Family Bathroom
- Parking for Two Cars
- Idyllic Countryside Views

£309,950





EPC Rating - C

Tenure - Freehold

Council Tax Band -

Local Authority



To view this property please contact our Market Harborough office on 01858 431315



Part of
**SHELDON
BOSLEY
KNIGHT**
LAND AND
PROPERTY
PROFESSIONALS