



Ratby Lane, Markfield, LE67 9RJ

▲
**ANDREW
GRANGER & CO**
└─┘

Part of

**SHELDON
BOSLEY**
KNIGHT

LAND AND
PROPERTY
PROFESSIONALS

Property Description

*** AVAILABLE END OF MARCH***

An opportunity has arisen to rent a 3-bedroomed, former gate house located to the edge of Markfield. The accommodation comprises of entrance hall with original parquet flooring, cloak store cupboard, 2 reception rooms, kitchen with gas range, extractor hood, integrated day fridge, freezer, dishwasher and washer dryer, guest cloakroom and toilet, conservatory with parquet floor overlooking the extensive garden/patio, first floor main bedroom with full fitted furniture, second double bedroom with fitted robes, third bedroom large single/study, bathroom with corner bath, separate shoer cubicle and vanity sink area, extensive gardens to front and rear with storage unit. Outside offers a garden area and off road parking for two vehicles.

The property is offered unfurnished.

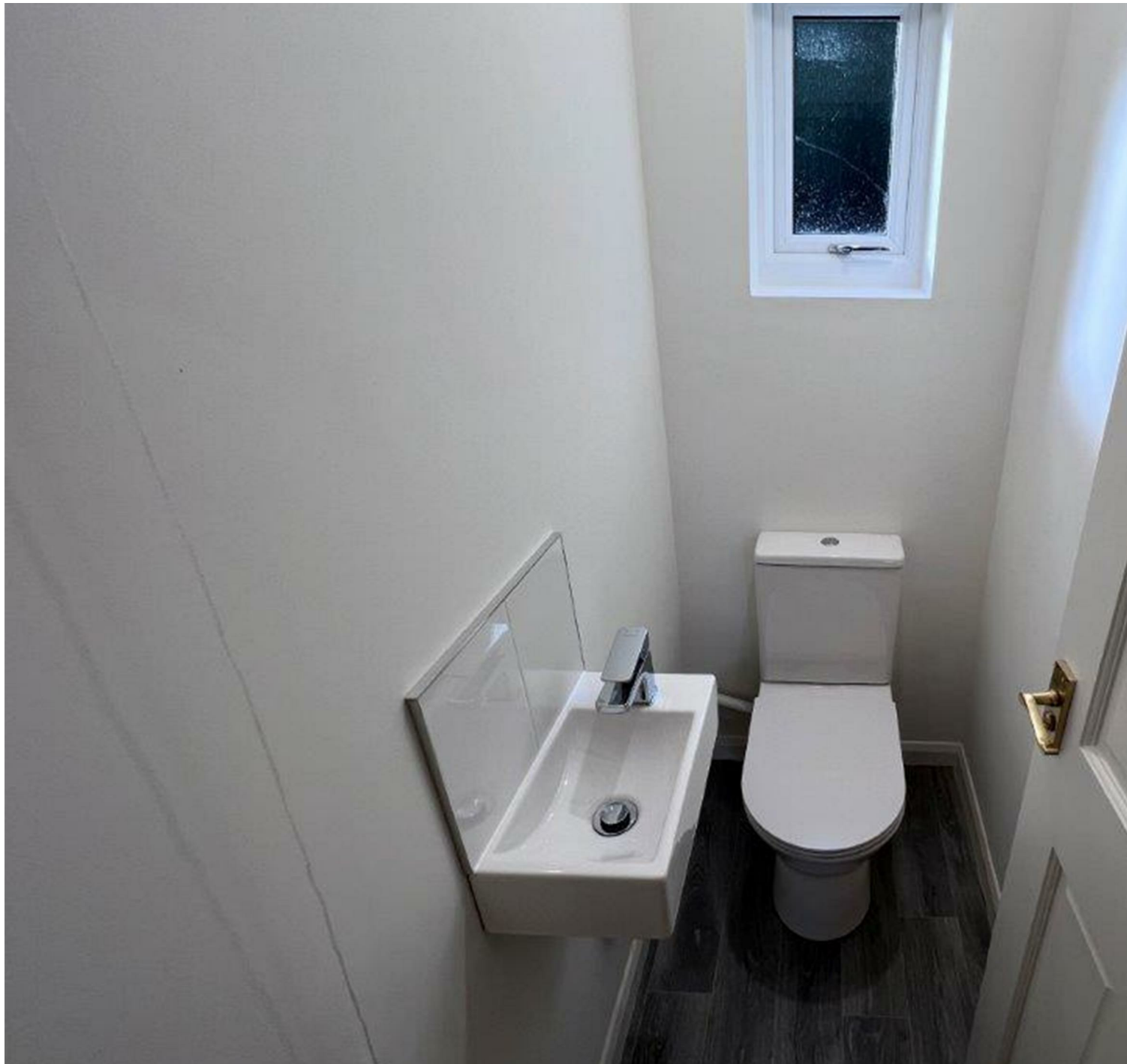
Council Tax Band: D.

Energy Rating: E.

Initial 6 Month Tenancy.







Key Features

- AVAILABLE END OF MARCH
- 3 Bedrooms
- Detached Property
- Large Garden
- EPC Rating: E
- Markfield
- Off Road Parking
- Council Tax Band D
- Initial 6 Month Tenancy

£1,500 PCM