



**Barbara Avenue, Off Scraptoft Lane, Leicester, LE5 2AD**

**ANDREW  
GRANGER & CO**

Part of  
**SHELDON  
BOSLEY  
KNIGHT**  
LAND AND  
PROPERTY  
PROFESSIONALS



# Property Description

Requiring full modernisation and improvement this three bedroomed extended traditional bay fronted detached house is positioned parallel to "Bushby Brook".





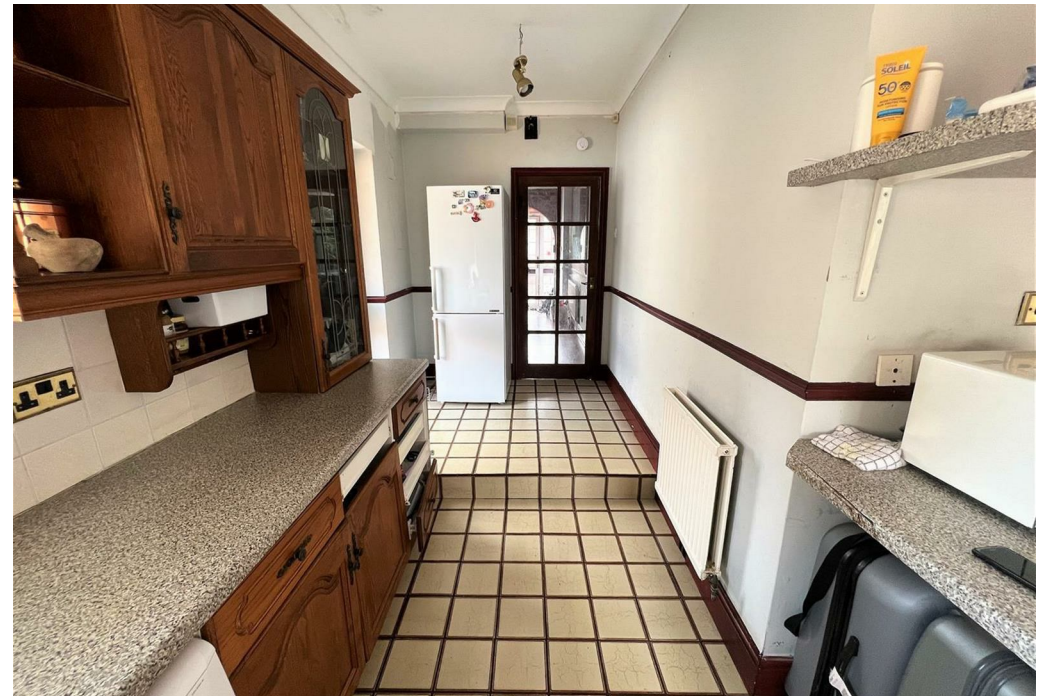


## Key Features

- REFURBISHMENT REQUIRED
- EXTENDED BAY FRONTED DETACHED HOUSE
- THREE BEDROOMS
- LOUNGE/DINER
- KITCHEN/DINER
- GAS FIRED CENTRAL HEATING
- GARDENS & DRIVEWAY
- POPULAR LOCATION
- POSITIONED PARALLEL TO BUSHBY BROOK
- GROUND FLOOR GUEST W.C

**£330,000**









Created using Vision Publisher™



EPC Rating - D

Tenure - Freehold

Council Tax Band - C

Local Authority  
Leicester

We routinely refer clients to both our recommended Legal Firm and a panel of Financial Services Providers. It is your decision whether you choose to deal with these companies. In making that decision, you should know that we receive a referral fee





To view this property please contact our Oadby (Sales) office on 0162 429922

Part of  
**ANDREW  
GRANGER & CO**

Part of  
**SHELDON  
BOSLEY  
KNIGHT**

LAND AND  
PROPERTY  
PROFESSIONALS