



Bestwood Close, Heathley Park, Leicester, LE3 9EY



Part of
**SHELDON
BOSLEY
KNIGHT**
LAND AND
PROPERTY
PROFESSIONALS

Property Description

A three storey town house with views over Gorse Hill City Farm and Leicester, offering spacious and flexible accommodation comprising: Entrance hall, Guest Cloaks W.C, Utility Room, Ground Floor Double Bedroom, First Floor Landing, Open plan living/kitchen/diner, Second Floor Landing, Two Double Bedrooms (Master Bedroom Having En-suite Shower Room) and family bathroom. Outside: Driveway leads to an integral garage, enclosed rear gardens. No Upward Sales Chain.



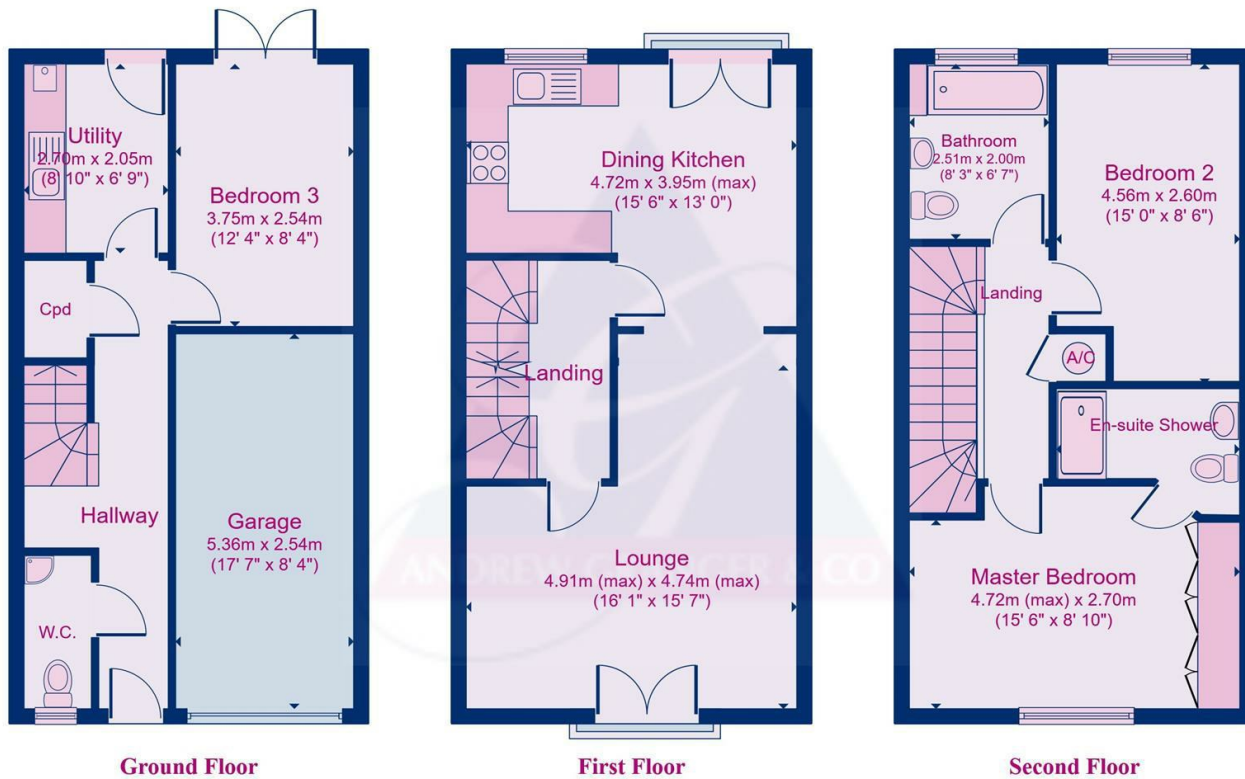


Key Features

- Spacious Three Storey End Town House
- Views Over City Farm To Rear Aspect
- Three Bedrooms
- Guest W.C, En-Suite Shower Room & Family Bathroom
- Utility Room
- Driveway Leading To Integral Garage
- No Onward Chain
- Gas Central Heating
- UPVC Double Glazing
- EPC - C

£280,000





Floor plans are for identification purposes only. All measurements are approximate.
Created using Vision Publisher™



EPC Rating - C

Tenure - Freehold

Council Tax Band - D

Local Authority
Leicester City Council Tax



To view this property please contact our Leicester (AG) office on 0116 242 9922



Part of
**SHELDON
BOSLEY
KNIGHT**
LAND AND
PROPERTY
PROFESSIONALS