



Stackyard Close, Thorpe Astley, Leicester, LE3 3SE



Part of
**SHELDON
BOSLEY
KNIGHT**
LAND AND
PROPERTY
PROFESSIONALS

Property Description

A modern second floor apartment offering light and spacious accommodation positioned in the popular area of Thorpe Astley

The apartment benefits from gas central heating, UPVC double glazing and telephone intercom system.

The apartment is accessed via communal entrance hall with stairs to second floor.

The accommodation in brief comprises entrance hall, spacious living area, fitted kitchen, master double bedroom with ensuite shower room, second double bedroom and family bathroom.

Outside there is an allocated parking space.

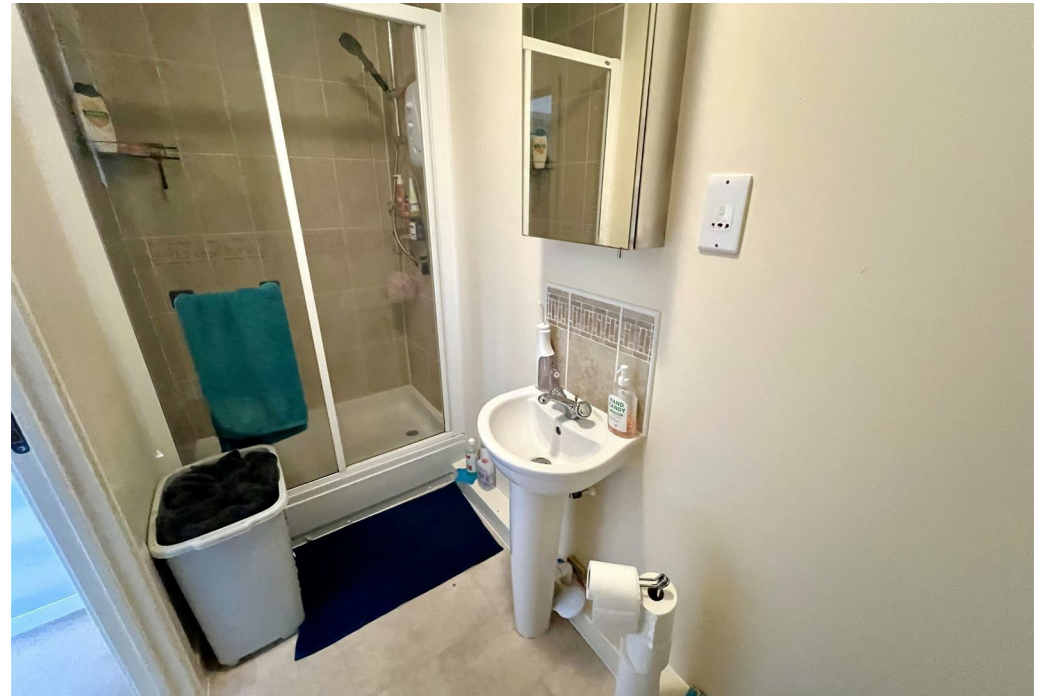


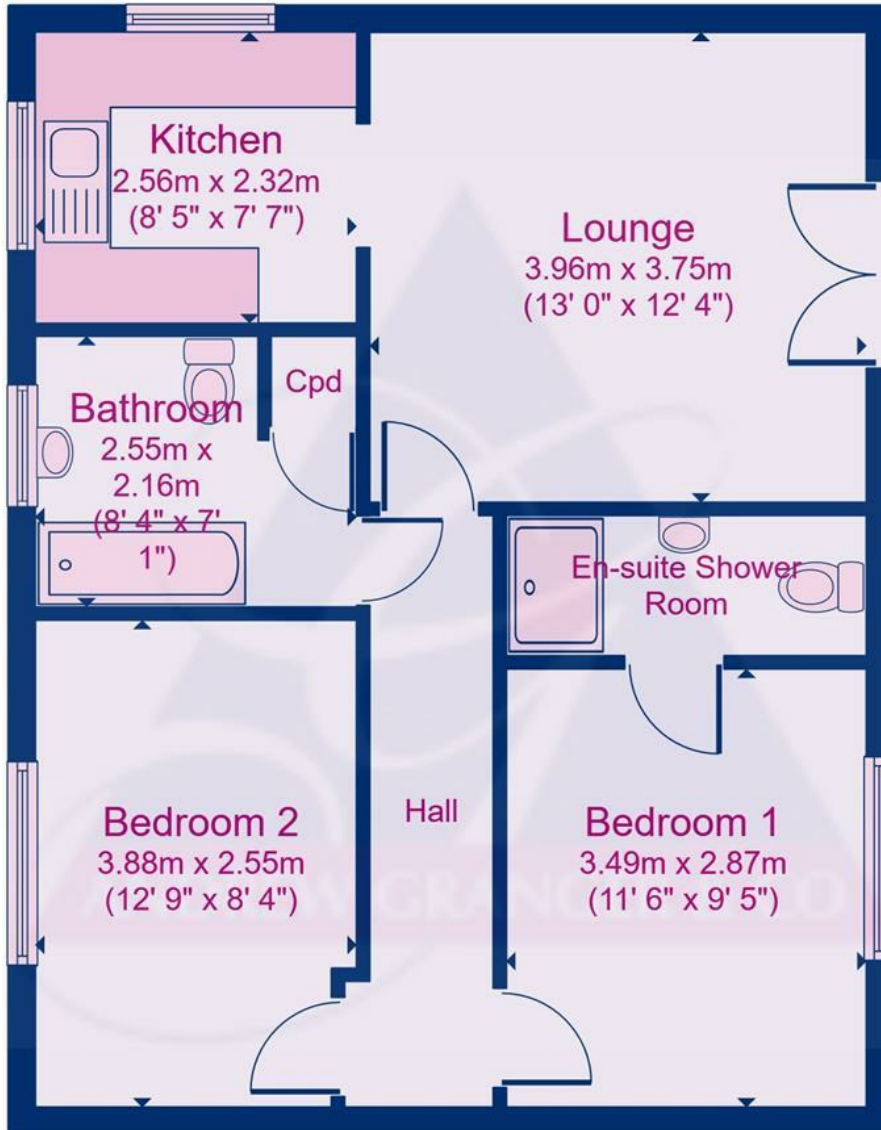


Key Features

- Leasehold
- EPC - C
- Allocated Parking Space
- Telephone Intercom System
- Second floor apartment
- Gas Central Heating
- Master Bedroom with Ensuite
- Juliet Balcony
- Popular Location

**Offers In Excess Of
£140,000**





Ground Floor

Floor area 56.6 sq.m. (610 sq.ft.) approx

Floor plans are for identification purposes only. All measurements are approximate.
Created using Vision Publisher™

EPC Rating - C

Tenure - Leasehold

Council Tax Band - B

Local Authority
Blaby District Council



To view this property please contact our Leicester (AG) office on 01162 429922



Part of
**SHELDON
BOSLEY
KNIGHT**
LAND AND
PROPERTY
PROFESSIONALS