



HILDEN  
Management



# The Nursery, Downs Road, East Studdal, Dover CT15 5BX

Guide Price £450,000

🛏 3 🚿 2 🚗 1





INCENTIVES AVAILABLE ON SELECTED PLOTS....Contact us now for more information!

Nestled in the quaint hamlet of East Studdal, this exclusive development comprises just 14 private residences, each set in a serene environment that boasts ample space, breathtaking views, and peace.

This three-bedroom semi-detached home stands out with its generous dimensions and expansive plot. The kitchen is a real highlight, featuring high specifications with sleek, handleless designs and mirror glass splash backs.

This development presents a collection of spacious, thoughtfully designed family homes that excel in design, location, and layout. The ground floor offers a harmonious flow, creating a blend of private spaces and large, open reception areas perfect for family events.

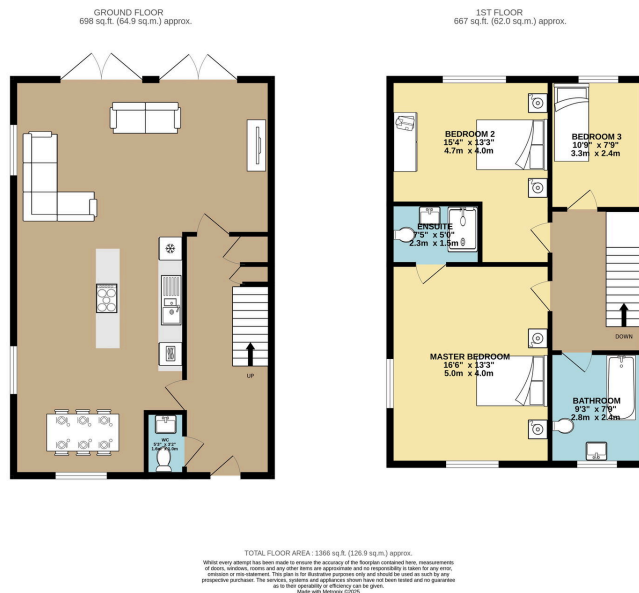
Such new constructions are seldom found to match the size, calibre, plot size and location, these impressive homes provide. Enquire now for more details.

Additional plots will soon be released — reach out to us for further details.

Viewings are now being booked - Get in touch to schedule yours!

**PROPERTY TO SELL?....NO PROBLEM!** Talk to us about our assisted move service.





- A beautiful development in an exceptional location in the hamlet of East Studdal, Kent
- Just 14 Properties occupying this generous development
- Finished to a high specification by a respected local developer
- Each Home offering generous plot sizing and street parking
- Viewings available - By Appointment Only Contact us to find out more
- Assisted move service available.
- Ample parking
- Stunning open planned living space

Hilden Management Limited  
Ground Floor, 2 Jubilee Way Faversham, Kent, ME13 2GD  
01795 581005  
info@hilden.management

**hilden.management**

Registered Office Address: Dry Close, Newbery Lane, Misterton, Somerset, TA18 8NE.  
Company Number: 15048475

