



HILDEN
Management

The Nursery, Downs Road, East Studdal, Dover CT15 5BX

From £450,000

🛏 3 🚿 2 🛋 1



- Each Home offering generous plot sizing
 - Finished to a high specification by a respected local developer
 - Viewings available Now!
 - Parking to all plots
 -
- Just 14 Properties occupying this opulent development
 - Located in the Hamlet of East Studdal, Kent
 - High Specification Fixtures and fittings
 - Assisted Move service available
 -



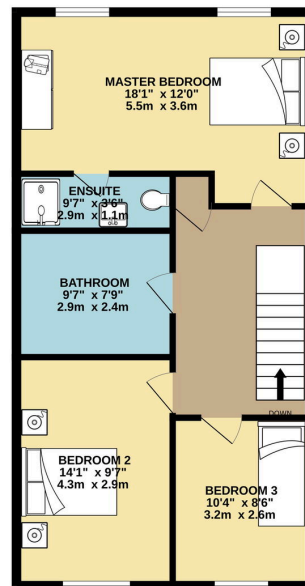
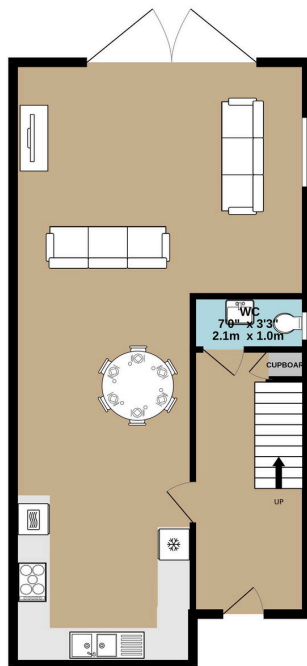
HILDEN

Management



GROUND FLOOR
649 sq.ft. (60.3 sq.m.) approx.

1ST FLOOR
639 sq.ft. (59.3 sq.m.) approx.



TOTAL FLOOR AREA: 1288 sq.ft. (119.7 sq.m.) approx.
Whilst every attempt has been made to ensure the accuracy of the floorplan contained herein, measurements of doors, windows, rooms and any other items are approximate and no responsibility is taken for any error, omission or mis-statement. This plan is for illustrative purposes only and should be used as such for any prospective purchase. The services, systems and appliances shown have not been tested and no guarantee as to their operability or efficiency can be given.
Made with Metreplex ©2025

INCENTIVES AVAILABLE ON SELECTED PLOTS....Contact us now for more information!

Discover an extraordinary development of 14 high-specification private homes nestled in the picturesque hamlet of East Studdal. For those in pursuit of stunning views, serene countryside, and peace, your search ends here. Three-bedroom semi-detached homes of this calibre are a rarity.

The initial plots have been unveiled, boasting remarkable finishes, flawlessly executed, with top-tier kitchens featuring bronze mirror splashbacks and state-of-the-art appliances. Viewings are now open. This development stands out as truly unique.



HILDEN
Management

HAVE A PROPERTY TO SELL?...NO PROBLEM! Speak to us about our assisted move service.