



HILDEN  
Management



# Lime Trees, Minster, Ramsgate, Kent, CT12 4FE

£475,000

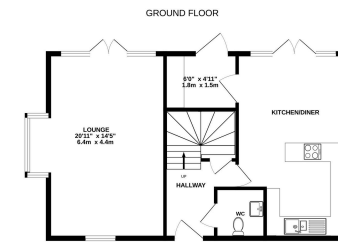
🛏️ 4 🚿 2 🚻 1



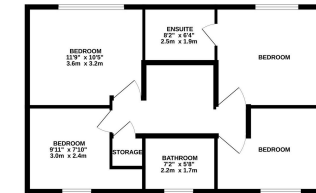
- Four Bedroom Detached Family Home
- Exceptional Kitchen / Dining Room
- Ground Floor Cloakroom
- LVT flooring to the ground floor
- Carport and block paved driveway
- Master Bedroom with Ensuite
- Separate Utility Room
- Lounge measuring in excess of 20ft
- New build being offered with structural build warranty
- Contact us to book your viewing - Viewing strictly by appointment only







1ST FLOOR



TOTAL FLOOR AREA: 1302sq ft (121.0 sq m) approx.  
While every effort has been made to ensure the accuracy of the floor plan contained herein, measurements of actual areas are taken as they exist on the day of completion and are not necessarily in line with the original contract particulars. The architect, architect's agent and/or contractor shall not be liable for any errors or omissions. The architect, architect's agent and/or contractor shall not be liable for any errors or omissions.

New build four bedroom family home, located on a small cul de sac development in sought after Minster village.

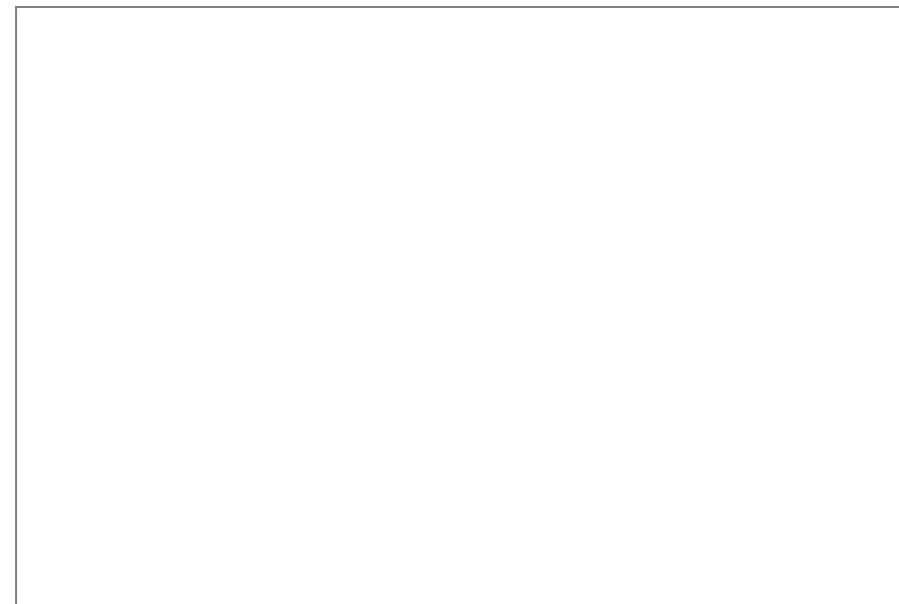
Internally the property offers fantastic space, measuring over 1300 sq. ft. / 120sq.m.

The ground floor has a cloakroom, storage cupboard. light front to back lounge with French style doors. Sociable and spacious kitchen breakfast room, with doors leading out to the garden. A separate utility room. The first floor has a stunning family bathroom. Four bedrooms, the master with ensuite.

Externally the garden is generous occupying a wide plot. With the additional benefit of a block paved driveway, and carport.

Contact us to arrange your viewing

Hilden Management Limited  
 Ground Floor, 2 Jubilee Way Faversham, Kent, ME13 2GD  
 01795 581005  
 info@hilden.management



**hilden.management**

Registered Office Address: Dry Close, Newbery Lane, Misterton, Somerset, TA18 8NE.  
 Company Number: 15048475

