



HILDEN
Management

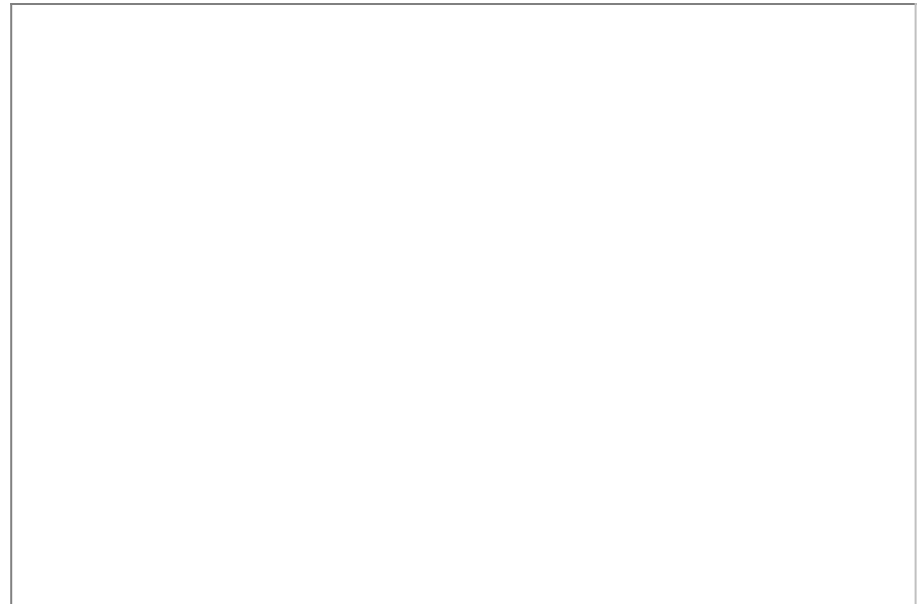
Stable Mews, St. Nicholas At Wade , Kent, CT7 0PW

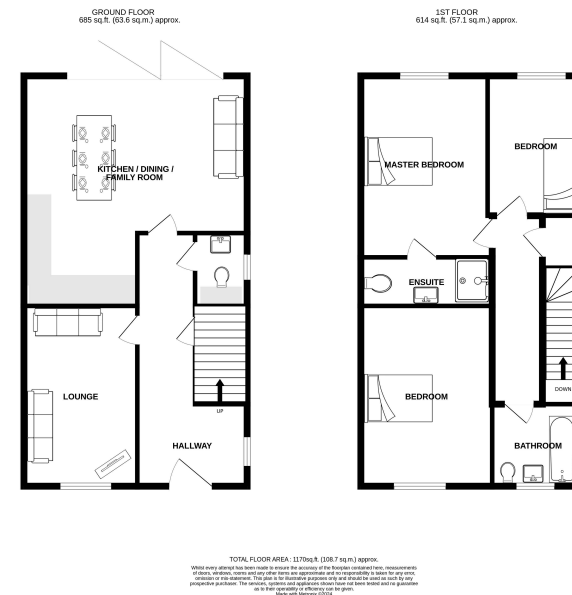
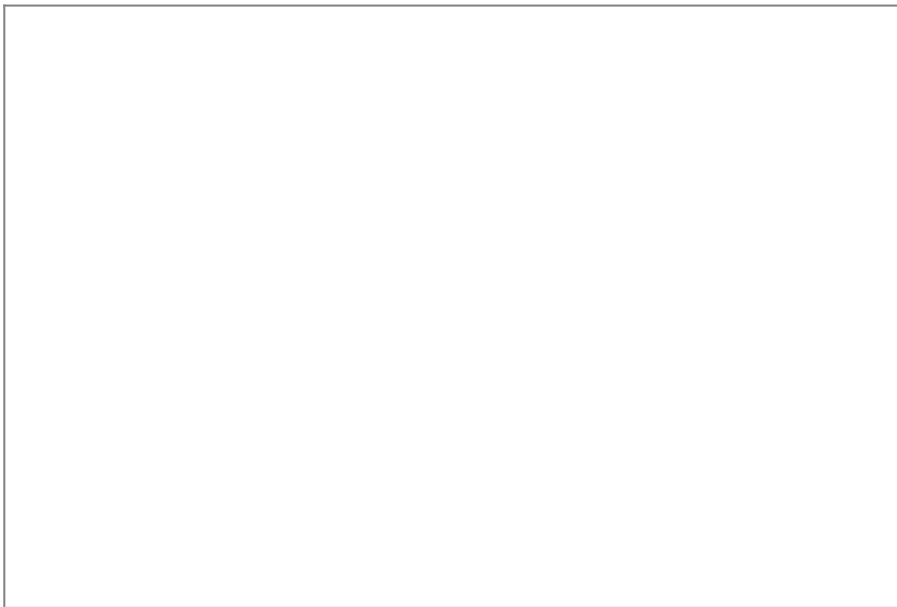
£450,000

3 2 1



- Detached Spacious Three Bedroom Family Home
- Beautifully situated with views to the rear
- Bi Fold Doors from the Kitchen / Dining / Family Room leading to a beautiful garden
- Single development within a village setting
- Garage, and driveway parking for multiple vehicles
- Stunning sociable and generous living space
- Master Bedroom With Ensuite
- Complete with appliances, flooring and 10 year warranty





Nestled in the heart of a picturesque village, where modern comfort meets timeless charm. Introducing this stunning detached property, perfectly positioned to capture views and occupying an enviable plot that promises an exceptional living experience.

There is a separate lounge, providing a tranquil retreat for relaxation or entertaining guests, the heart of the property - an outstanding Kitchen / Dining / Family space designed for socialising and family gatherings. With plenty of room for dining, casual seating, and cooking, this area is bathed in natural light, creating an inviting atmosphere for making memories with loved ones.

Experience the seamless connection between indoor and outdoor living with stunning bi-fold doors that open the outside

Energy performance certificate (EPC)			
Energy rating		Valid until	29 January 2033
B		Certificate number	8637-2135-000-0215-0272
Property type		Detached house	
Total floor area		109 square metres	
Rules on letting this property			
Properties can be let if they have an energy rating from A to E.			
You can read guidance for landlords on the regulations and exemptions (https://www.gov.uk/guidance/how-to-apply-for-a-domestic-epc-value-added-property-certificates-energy-efficiency-calculator-and-guidance)			
Energy rating and score		The graph shows this property's current and potential energy rating.	
This property's energy rating is B. It has the potential to be A.			
See how to improve this property's energy efficiency .			
		Properties get a rating from A (best) to G (worst) and a score. The better the rating and score, the lower your energy bills are likely to be.	
For properties in England and Wales: the average energy rating is D the average energy score is 60			