



44 Chipping Vale  
Milton Keynes, MK4 2JN



William Coulson  
Partnered With  
**Simpsons**  
Property Experts

"Location & Design Combine..."

...to form this beautifully presented three-bedroom property, boasting an extended kitchen, a useful garden room, situated within a desirable residential location!

Entrance is gained through the front door with a glazed side light window into the generous porch with an internal front door into the hallway.

Inviting entrance hall with stairs rising to the first floor, access to the living/dining room.

Beautifully appointed living room of a generous size with a bay window to front the front aspect and a door leading through to the dining room.

Naturally light dining room with views out over the garden and French doors leading out, and access to the guest cloakroom.

Stunning kitchen finished to a high standard situated to the rear elevation. The kitchen features tiled flooring, an array of eye and base level units, worktop, ceramic tiled splashbacks, a stainless steel one and a half bowl sink, an integrated oven and a four ring gas hob with extractor hood over, and space for a fridge/freezer, dishwasher, tumble dryer and washing machine.

First floor landing with access to the loft hatch and all of the bedrooms.

Three bedrooms, two of which are double in size with the second bedroom benefitting from useful fitted storage cupboards.

Family shower room boasting attractive floor to ceiling tiling and a three-piece suite to include corner shower cubical, a low-level WC and a wash hand basin.

The property boasts a neat frontage comprising a driveway with off road parking for one car and a further allocated parking space to the rear.

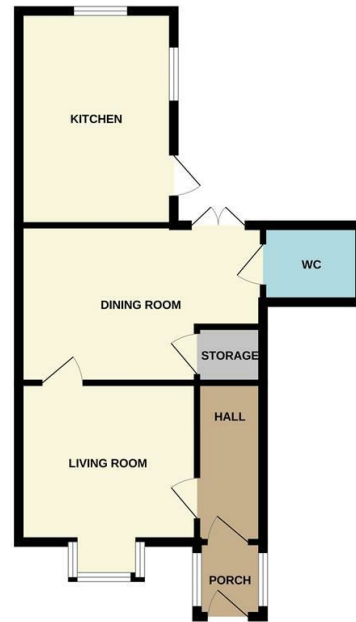


Offers over £325,000

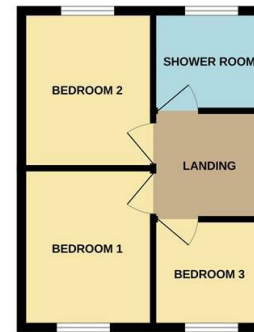
3 1 2



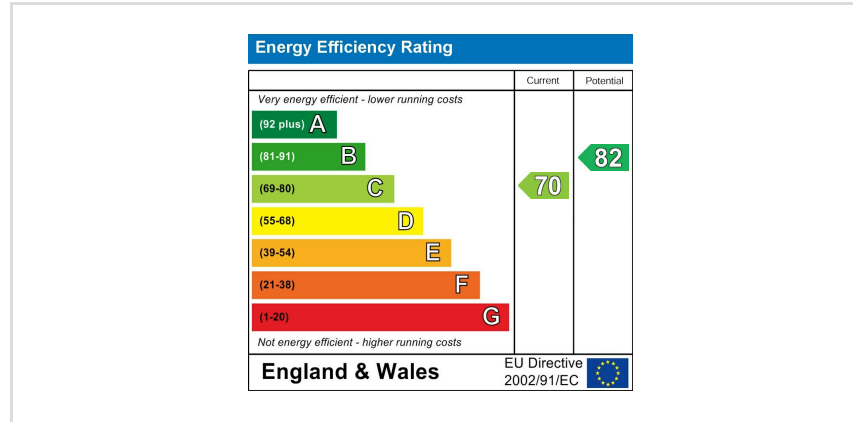
GROUND FLOOR



1ST FLOOR



Whilst every attempt has been made to ensure the accuracy of the floor plan contained here, measurements of doors, windows, vents and any other items are approximate and no responsibility is taken for any error, omission, or mis-statement. The plan is copyright to Simpson and Partners and is for illustrative purposes and should only be used as such for any prospective purchase. The services, systems and appliances shown have not been tested and no guarantee as to their operability can be given. Made with MetreOne 2016.





William Coulson

In Partnership With

**Simpsons**  
Property Experts

Tel: 01908 040289

Email: [william.coulson@simpsonspropertyexperts.co.uk](mailto:william.coulson@simpsonspropertyexperts.co.uk)

Web: <https://simpsonspropertyexperts.co.uk/our-locations/milton-keynes>

