



19 Colchester Court
Milton Keynes, MK3 6BG



William Coulson
Partnered With
Simpsons
Property Experts

"Room To Grow"

Offered for sale with No Chain!

Situated in a popular residential location this impressive three bedroom property was built by Bryant Homes in 2003 and boasts generous proportions throughout, three bedrooms, a quality finish and the added benefit of an additional reception room!

Set on the popular residential development with excellent travel links to London, and Bletchley town centre and other local amenities within walking distance.

Well presented living room, featuring a window to the front elevation, a neutral decor and a door into the kitchen/dining room.

Stylish kitchen/dining room complete with tiled flooring, space for a dining table and chairs and doors lead out to the rear garden.

The refitted kitchen comprises an array of eye and base level units, a timber effect worksurface with a matching up-stand, ceramic wall tiling, a stainless steel sink with a mixer tap and draining board, a electric oven, a gas hob, dishwasher and space for a fridge/freezer, and a washing machine.

Ground floor family room situated to the front elevation offering a flexible layout with the potential to be used as a playroom or home office.

Guest WC with continued wood effect flooring, a wash hand basin and a low-level WC.

Stairs rise to the first floor landing with airing cupboard and a partially loft hatch fitted with a ladder to a partially boarded loft space.

Three well-proportioned bedrooms, the main bedroom benefitting from fitted wardrobes, an ensuite and two windows overlooking the rear garden.

The ensuite comprising ceramic tiled flooring and walls and a white three-piece suite to include a low-level WC, a wash hand basin and walk-in shower with a fitted shower over.

Family bathroom comprising ceramic tiled flooring and walls, a low-level WC, a wash hand basin and a panel bath.

The rear garden has been beautifully maintained, benefitting from a paved patio area ideal for outdoor dining, an artificial lawn, decking and a side access gate.



Offers over £350,000



3



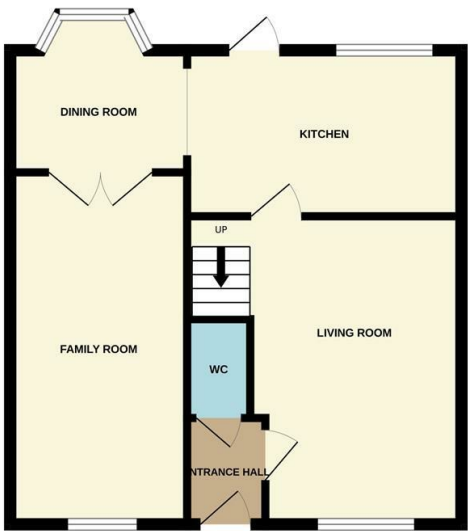
2



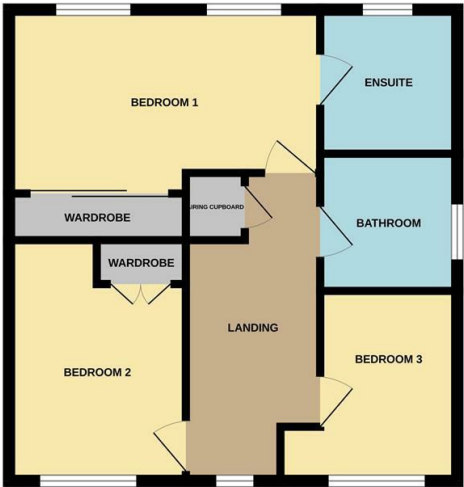
2



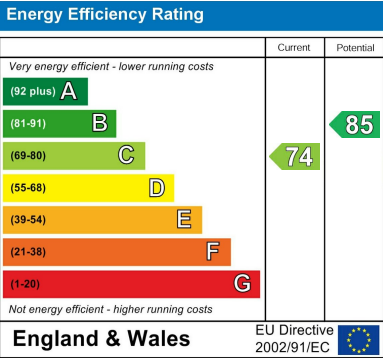
GROUND FLOOR



1ST FLOOR



Whilst every attempt has been made to ensure the accuracy of the floor plan contained here, measurements of doors, windows, rooms and any other items are approximate and no responsibility is taken for any error, omission, or mis-statement. The plan is copyright to Simpson and Partners and is for illustrative purposes and should only be used as such by any prospective purchaser. The services, systems and appliances shown have not been tested and no guarantee as to their operability can be given
Made with Metropix ©2025





William Coulson
Partnered With
Simpsons
Property Experts

Tel: 01908 040289

Email: william.coulson@simpsonspropertyexperts.co.uk

Web: <https://simpsonspropertyexperts.co.uk/our-locations/milton-keynes>

