



7 Montagu Drive
Eaglestone, MK6 5ER



William Coulson
Partnered With
Simpsons
Property Experts

"Carefully Maintained and Updated..."

... to form this fantastic two bedroom home, situated within a short drive to the city centre and train station with bus routes available.

Enter through the front door to access into the lounge/diner and stairs rise to the first floor.

Beautifully appointed lounge/diner boasting a window to the front elevation injecting an abundance of natural light, and a door to the kitchen.

The kitchen benefits from neutral décor, a host of eye and base level units, a stainless-steel sink with a mixer tap and draining board, an oven, washing machine and space for a fridge freezer.

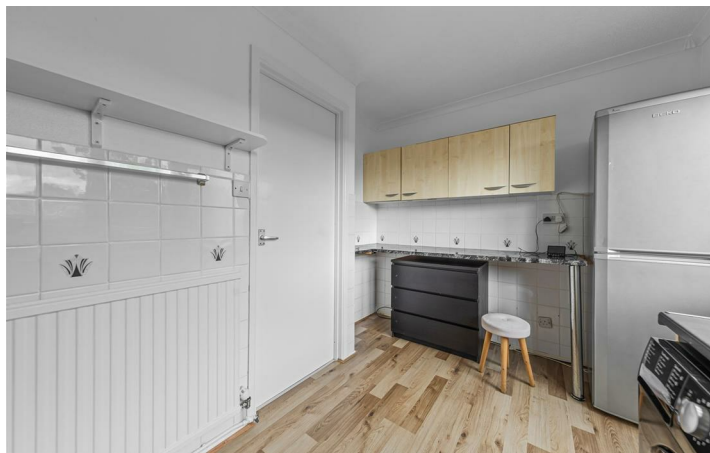
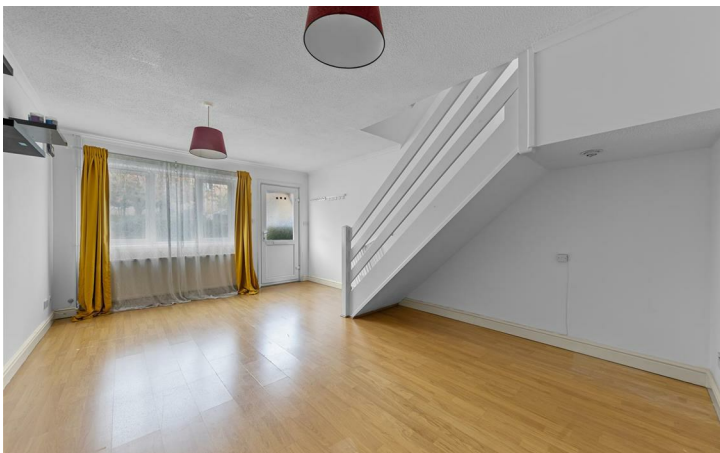
The main bedroom is positioned to the front elevation, and boasts a built-in wardrobe.

The second bedroom overlooks the rear garden, and benefits from being double in size.

Modern family bathroom comprising panel bath with shower over, low-level w/c and wash hand basin.

The property is set back from the road offering a favourable position and benefits from off-road parking as well as a single garage. The larger than most rear garden features decking and the remainder is mostly laid to lawn.

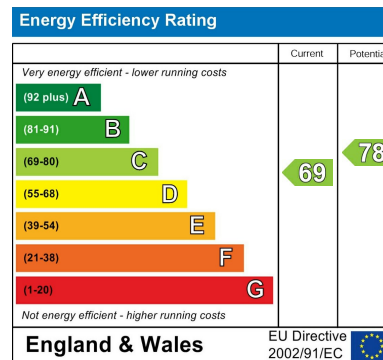
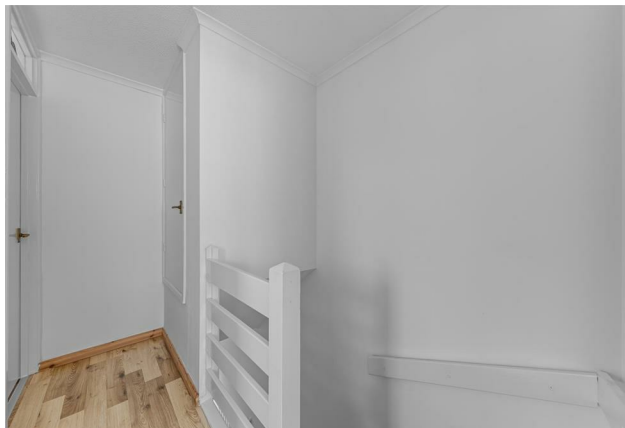
£270,000





Whilst every attempt has been made to ensure the accuracy of the floor plan contained here, measurements of doors, windows, rooms and any other items are approximate and no responsibility is taken for any error, omission, or mis-statement. The plan is copyright to Simpson and Partners and is for illustrative purposes and should only be used as such for any prospective purchase. The services, systems and appliances shown have not been tested and no guarantee as to their operability can be given.

Made with Metaplan ©2020





William Coulson
Partnered With
Simpsons
Property Experts

Tel: 01908 040289

Email: william.coulson@simpsonspropertyexperts.co.uk

Web: <https://simpsonspropertyexperts.co.uk/our-locations/milton-keynes>

