



22 Wilkinson Crescent  
Milton Keynes, MK12 5LL



William Coulson  
Partnered With  
**Simpsons**  
Property Experts



## "Location & Design Combine..."

This impressive, well-kept three-storey detached residence, situated in a popular and established residential location within walking distance to Wolverton's amenities, boasts generous proportions throughout. It features four bedrooms – an exceptionally large main bedroom with a spacious en suite, an integrated sound system, a garage, electric gates, and a well-proportioned established garden with an extended patio and separate decking area, making it a unique and desirable property!

Offers over £425,000



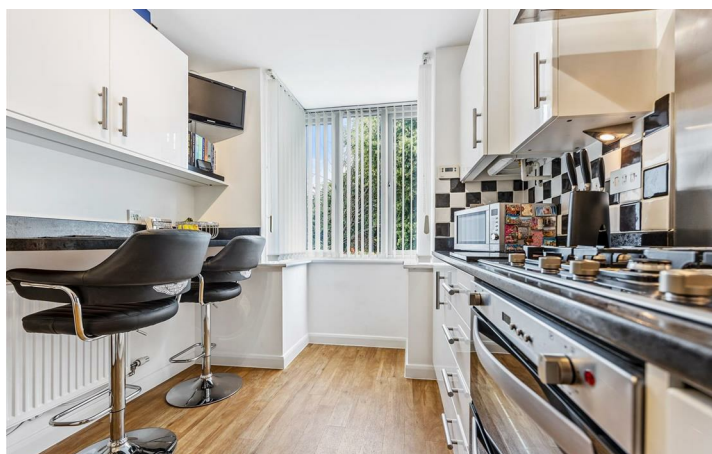
4

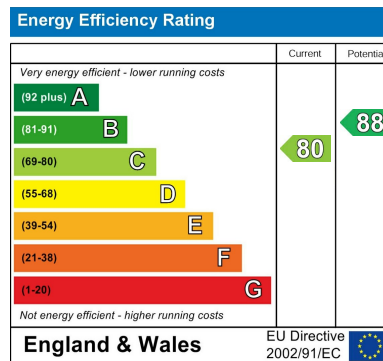
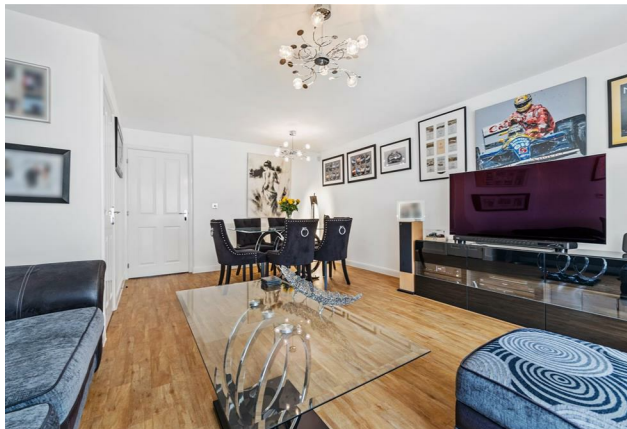


2



1









William Coulson  
Partnered With  
**Simpsons**  
Property Experts

Tel: 01908 040289

Email: [william.coulson@simpsonspropertyexperts.co.uk](mailto:william.coulson@simpsonspropertyexperts.co.uk)

Web: <https://simpsonspropertyexperts.co.uk/our-locations/milton-keynes>

