



55 Otterburn Crescent
Milton Keynes, MK5 6LY



William Coulson
Partnered With
Simpsons
Property Experts

"Attention First Time Buyers and Downsizers"

This property is offered for sale on a 70% fixed equity basis with no rent or premium.

Situated in an ever-popular residential location, just a short walk from local amenities, this two-bedroom apartment boasts a well presented interior and a spacious living accommodation, making this an ideal opportunity for first-time buyers & downsizers!

Spacious lounge with French doors opening to a Juliet balcony, ample space for a large sofa.

The kitchen/breakfast area comprising a host of wall and base level fitted units with worksurfaces incorporating sink with mixer taps and cutlery drainer. There is also plumbing for a washing machine.

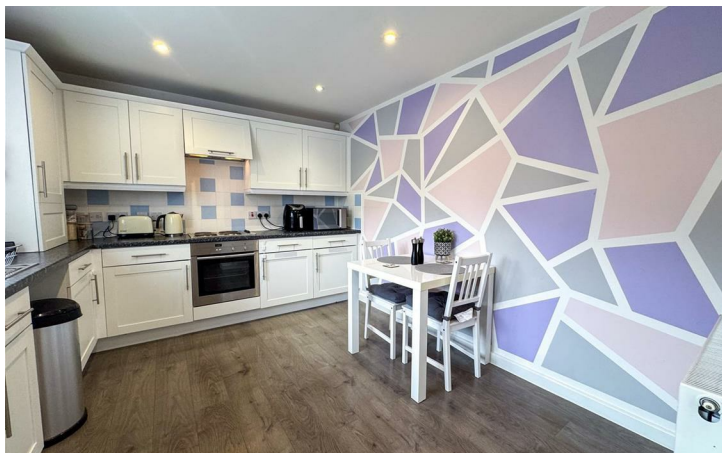
Main bedroom of a good size with en-suite shower comprising a three piece suite to include a low level WC, a wash hand basin and a walk-in shower.

Bedroom two is generously proportioned and benefits from being double in size.

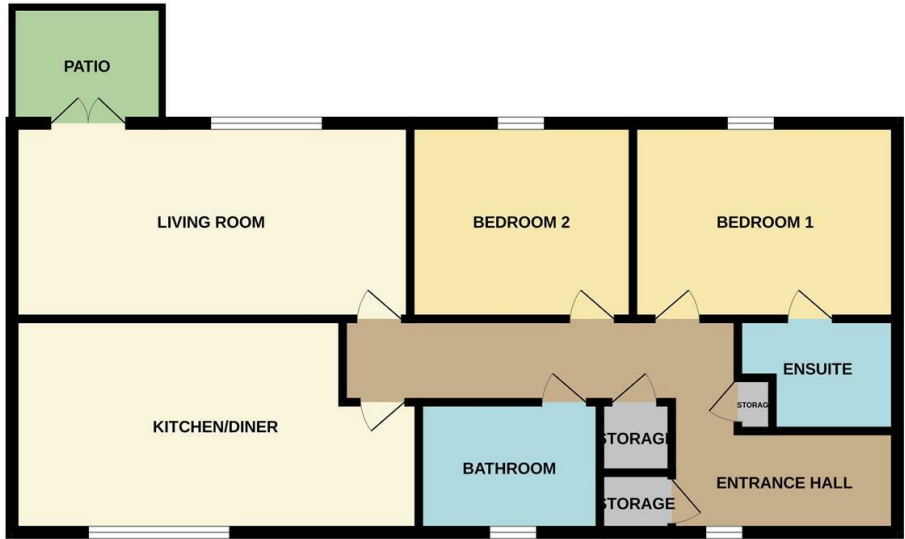
Bathroom comprises low-level WC, wash hand basin and panel bath with shower over.

Externally, there is an allocated parking space and patio area to the rear aspect.

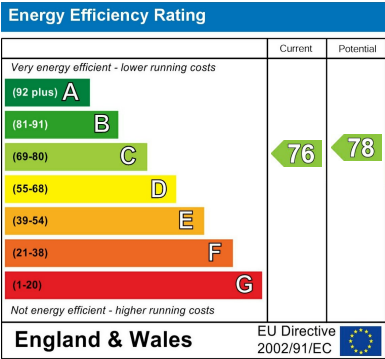
£175,000



GROUND FLOOR



Whilst every attempt has been made to ensure the accuracy of the floor plan contained here, measurements of doors, windows, rooms and any other items are approximate and no responsibility is taken for any error, omission, or mis-statement. The plan is copyright to Simpson and Partners and is for illustrative purposes and should only be used as such by any prospective purchaser. The services, systems and appliances shown have not been tested and no guarantee as to their operability can be given.
Made with Metropack 3/2025





William Coulson
Partnered With
Simpsons
Property Experts

Tel: 01908 040289

Email: william.coulson@simpsonspropertyexperts.co.uk

Web: <https://simpsonspropertyexperts.co.uk/our-locations/milton-keynes>

