



22 Holyhead Crescent
Milton Keynes, MK4 3AN



William Coulson
Partnered With
Simpsons
Property Experts

"Attention First Time Buyers"

Situated in a popular and established residential location just a short distance from the local primary school, this impressive property boasts generous proportions throughout, three bedrooms, bathroom, driveway and a rear garden!

Conveniently located within walking distance to the local shops, schools and Milton Keynes train station nearby with commuter rail links to London Euston.

Entrance through the front door leading into the inviting entrance hall featuring attractive laminate flooring, access to guest WC and stairs flow up to the first-floor landing.

Well-proportioned living room with a window to the front elevation flooding the room with natural light and space under the stairs for storage.

The kitchen comprises a range of eye and base level fitted units, roll top work surfaces, a one and half sink with drainage board, an integrated oven, a gas hob, space for a fridge/freezer and washing machine.

Spacious main bedroom with window to the front elevation and ample fitted wardrobe space.

Two further bedrooms, both benefitting from being spacious.

Family bathroom comprising tiled flooring, part tiled walls, a white three-piece suite to include a low-level WC, a wash hand basin, and a panel bath with a fitted shower over.

The property benefits from a neat and low maintenance frontage comprising a block paved driveway providing off road parking for up to three cars.

The larger than average rear garden offers the perfect space to sit out and entertain with friends in the afternoon sun.

£350,000



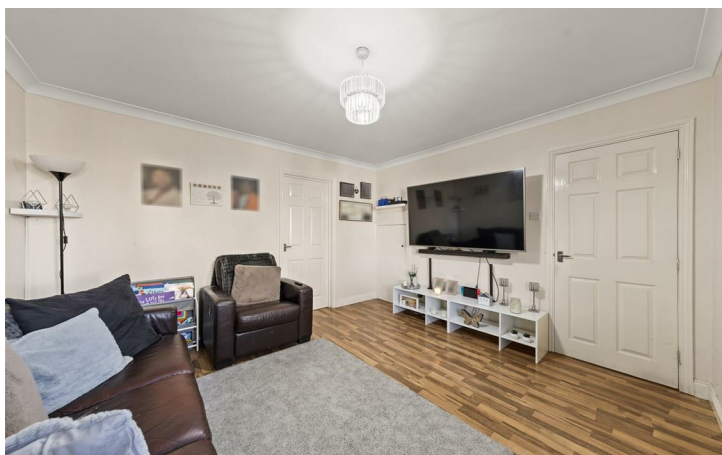
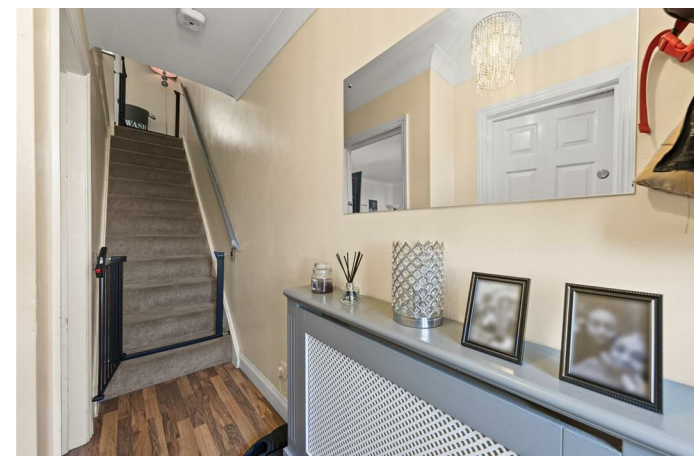
3

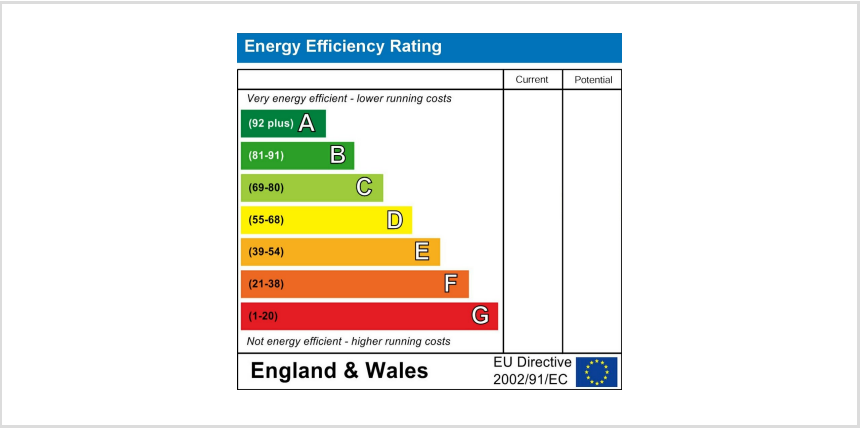


1



1







William Coulson
In Partnership With

Simpsons
Property Experts

Tel: 01908 040289

Email: william.coulson@simpsonspropertyexperts.co.uk

Web: <https://simpsonspropertyexperts.co.uk/our-locations/milton-keynes>

