



13 Ebbsgrove
Milton Keynes, MK5 8BD



William Coulson
Partnered With
Simpsons
Property Experts

"Extensive Proportions in An Exclusive Location!"

Nestled in a highly sought after cul de sac, this beautiful detached home is set in a prestigious and often requested location, boasting a study, five double bedrooms and a spacious rear garden!

Entrance is gained through the bespoke front door into a welcoming entrance hall with a guest WC and a staircase leading to the first floor. Guest WC comprising a wash hand basin, and a low-level WC.

Beautifully appointed living room boasting a rear aspect flooding the room with an abundance of natural light with a centralised open fireplace and French doors to the south facing garden.

The kitchen comprises a host of eye and base level high gloss units, an attractive worksurface with upstand, an undermounted sink with a mixer tap, Bosch double electric oven, Bosch induction hob with extractor and an integrated refrigerator and dishwasher. Utility room comprises eye and base level units, worksurface incorporating a stainless-steel sink with a mixer tap, freezer and plumbing for washing machine

Formal Dining Room offering a versatile layout and enough space for a large dining table, big enough to entertain the whole family. A second reception room to the front elevation with potential to be used as a family room or a home office.

First floor landing providing access to all five bedrooms, a family bathroom, an airing cupboard with shelving and a loft hatch to a partially boarded attic.

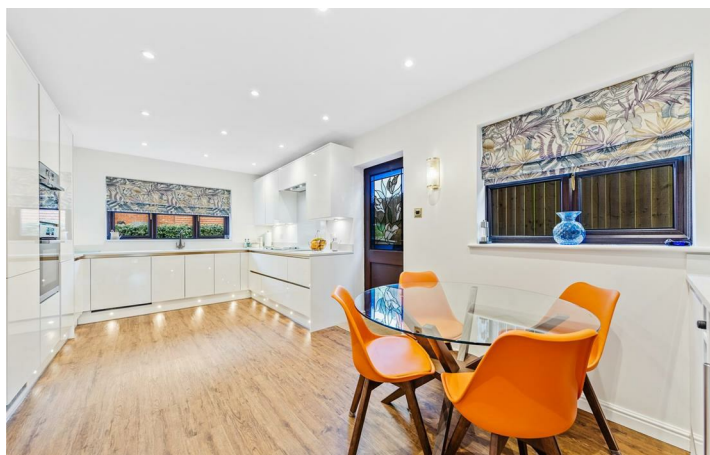
Impressive main bedroom featuring built-in wardrobes, an outlook to the rear elevation, and an ensuite bathroom. The ensuite comprises a heated towel rail and a four-piece suite incorporating a panel bath, shower cubicle, a wash hand basin and a low-level WC.

Bedroom Two also benefits from a built-in wardrobe and an ensuite.

Three further well-proportioned bedrooms, all of which benefit from being double in size. all with fitted wardrobes.

Family bathroom a four-piece suite to include a panel bath with a separate shower cubicle.

£875,000



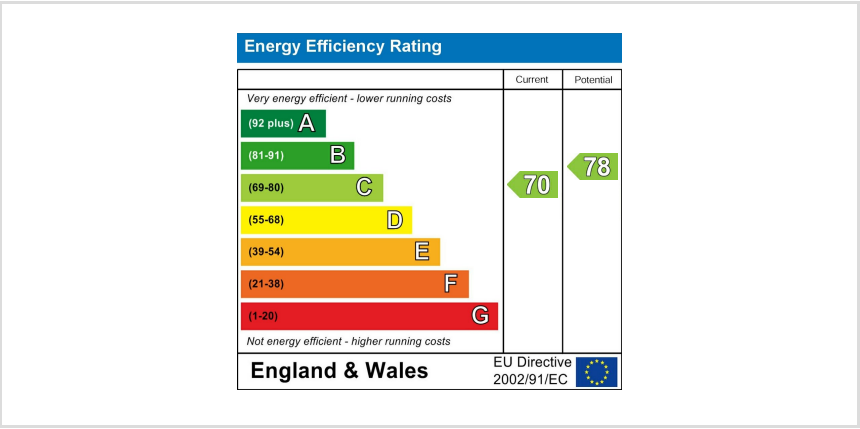
GROUND FLOOR



1ST FLOOR



Whilst every attempt has been made to ensure the accuracy of the floor plan contained here, measurements of doors, windows, rooms and any other items are approximate and no responsibility is taken for any error, omission, or mis-statement. The plan is copyright to Simpson and Partners and is for illustrative purposes and should only be used as such by any prospective purchaser. The services, systems and appliances shown have not been tested and no guarantee as to their operability can be given
Made with Metropix ©2025





William Coulson
In Partnership With

Simpsons
Property Experts

Tel: 01908 040289

Email: william.coulson@simpsonspropertyexperts.co.uk

Web: <https://simpsonspropertyexperts.co.uk/our-locations/milton-keynes>

