



22 Wilkinson Crescent
Milton Keynes, MK12 5LL



William Coulson
Partnered With
Simpsons
Property Experts

"Location & Design Combine..."

This impressive, well-kept three-storey detached residence, situated in a popular and established residential location within walking distance to Wolverton's amenities, boasts generous proportions throughout. It features four bedrooms – an exceptionally large main bedroom with a spacious en suite, an integrated sound system, a garage, electric gates, and a well-proportioned established garden with an extended patio and separate decking area, making it a unique and desirable property!

Offers over £425,000



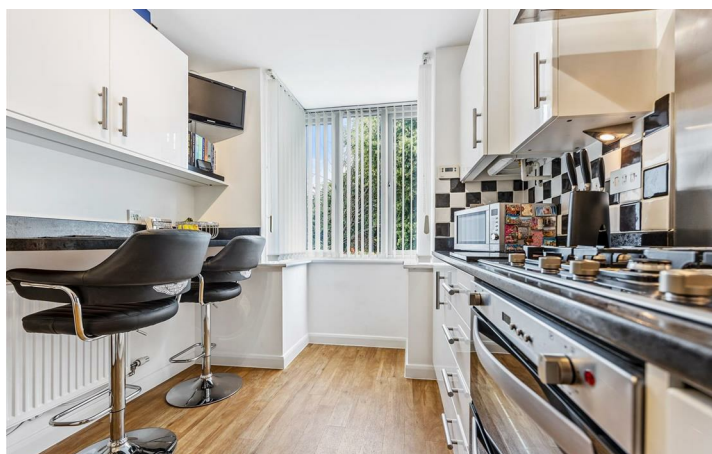
4



2

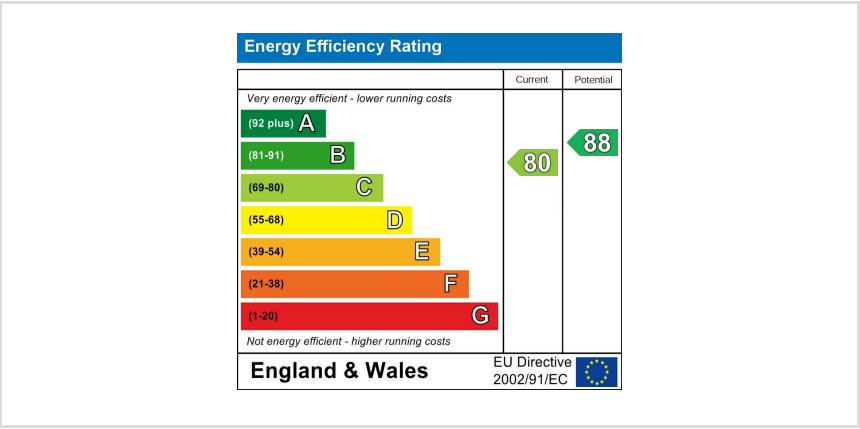


1





Whilst every attempt has been made to ensure the accuracy of the floor plan contained here, measurements of doors, windows, rooms and any other items are approximate and no responsibility is taken for any error, omission, or mis-statement. The plan is copyright to Simpson and Partners and is for illustrative purposes and should only be used as such by any prospective purchaser. The services, systems and appliances shown have not been tested and no guarantee as to their operability can be given.
Made with Metrooix ©2024



You may download, store and use the material for your own personal use and research. You may not republish, retransmit, redistribute or otherwise make the material available to any party or make the same available on any website, online service or bulletin board of your own or of any other party or make the same available in hard copy or in any other media without the website owner's express prior written consent. The website owner's copyright must remain on all reproductions of material taken from this website.



William Coulson
In Partnership With

Simpsons
Property Experts

Tel: 01908 040289

Email: william.coulson@simpsonspropertyexperts.co.uk

Web: <https://simpsonspropertyexperts.co.uk/our-locations/milton-keynes>

