



17 The Hedgerows  
Milton Keynes, MK4 1BD



William Coulson  
Partnered With  
**Simpsons**  
Property Experts

"A Familiar Favourite!"

Offered for sale with NO CHAIN!

Situated in an ever-popular residential location within walking distance to Furzton Lake and local shops, this fantastic property is situated on a sought-after road and boasts generous proportions, three bedrooms, off road parking and a garage.

Entrance through the front door leading into the entrance hall with a window to the front elevation, a door leading to the living room.

Impressively spacious living room with a window to the front aspect, curved archway to the dining room, and stairs flowing up to the first floor landing.

Naturally light dining area with views out over the garden and patio doors leading out.

Kitchen comprising tiled flooring, eye and base level fitted units, work surfaces, a stainless steel sink with draining board, space for cooker and fridge freezer.

First floor landing with access to the attic via a loft hatch.

Spacious main bedroom with a window to the rear elevation injecting natural light, space for a large wardrobe and a king-sized bed.

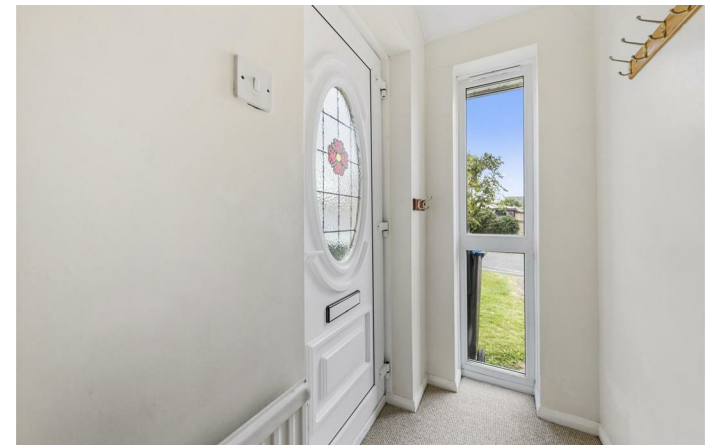
Double-sized second bedroom with ample space for bedroom furniture.

Third bedroom boasting a window to the front elevation.

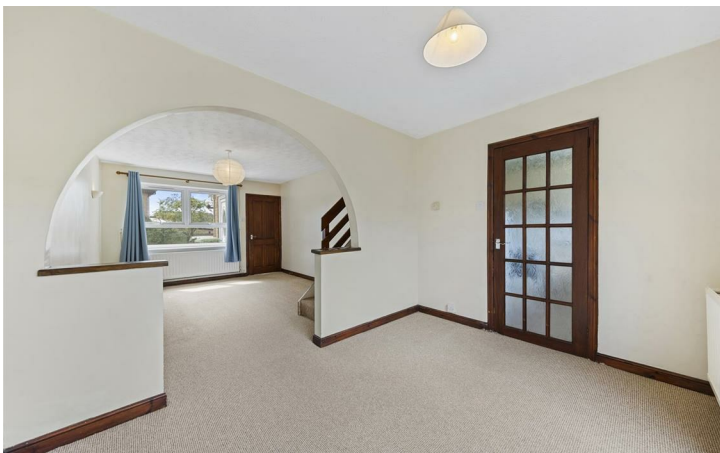
Garage providing excellent storage with an up and over door and power and light supply.

The enclosed rear garden boasts a patio area and lawn ideal for entertaining. Gated sided access.

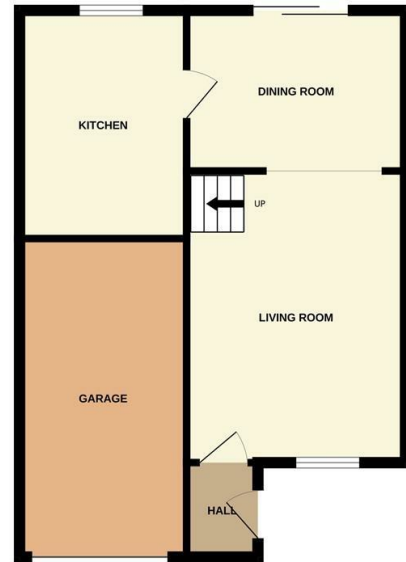
Blocked paved driveway with an attractive frontage with gated side access and a front garden.



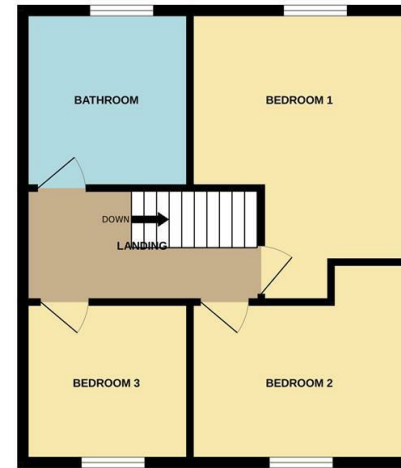
Offers over £350,000



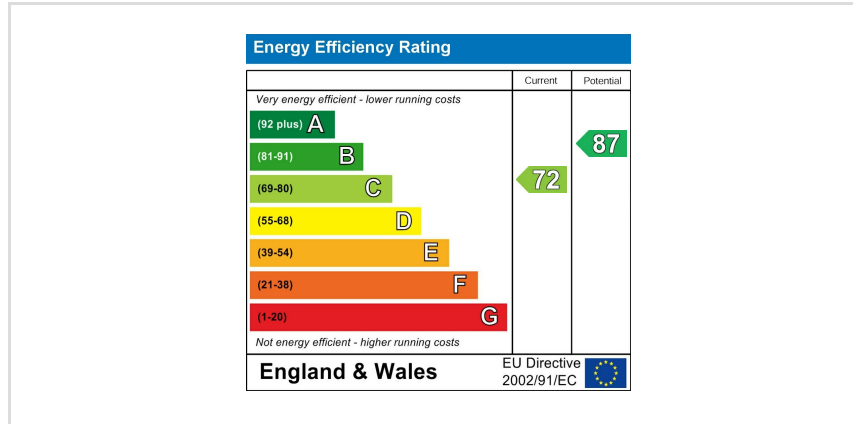
GROUND FLOOR



1ST FLOOR



Whilst every attempt has been made to ensure the accuracy of the floor plan contained here, measurements of doors, windows, rooms and any other items are approximate and no responsibility is taken for any error, omission, or mis-statement. The plan is copyright to Simpson and Partners and is for illustrative purposes and should only be used as such by any prospective purchaser. The services, systems and appliances shown have not been tested and no guarantee as to their operability can be given. Made with Metrick 02024





William Coulson

In Partnership With

**Simpsons**  
Property Experts



Tel: 01908 040289

Email: [william.coulson@simpsonspropertyexperts.co.uk](mailto:william.coulson@simpsonspropertyexperts.co.uk)

Web: <https://simpsonspropertyexperts.co.uk/our-locations/milton-keynes>

