



Garnet House 11 Merrivale Mews

Milton Keynes, MK9 2FQ



William Coulson
Partnered With
Simpsons
Property Experts

"Stepping up in the World"

Impeccably finished and beautifully presented, this first-floor Apartment boasts excellent accommodation in a highly convenient location, making it an ideal choice for those stepping onto the property ladder.

Located in the desirable Vizion development, this property is a short walk from Central Milton Keynes train station, offering a direct route to London Euston, making it an ideal choice for commuters.

Beautifully presented three bedroom first floor Apartment, offering generous proportions and a modern and contemporary finish throughout.

Entrance through the front door leads into the generous entrance hall with storage cupboard and doors to the rooms.

Fantastic open plan kitchen/living room providing a modern style of living with ample space to cook and entertain. There are windows overlooking the attractive gardens with door leading to the balcony allowing for an abundance of natural light to flood the room.

The modern kitchen is open to the living room and features an array of high gloss eye and base level units with soft close, work surfaces with an upstand, a stainless steel sink and draining board, and integrated appliances to include a fridge/freezer, a washing machine, dishwasher, electric oven, four ring hob, and a stainless steel extractor hood.

Generously sized bathroom, finished to a high standard with a heated towel rail and a three piece suite to include a low-level WC, a wash hand basin, and panel enclosed bath with shower over.

Three double bedrooms, with bedroom one boasting an ensuite shower room and featuring a built in double wardrobe.

Central location within walking distance of the shopping centre and the theatre district with a wide range of restaurants, bars, and the theatre, the Xscape with szone, cinema, casino and a range of shops, bars and restaurants.

£375,000



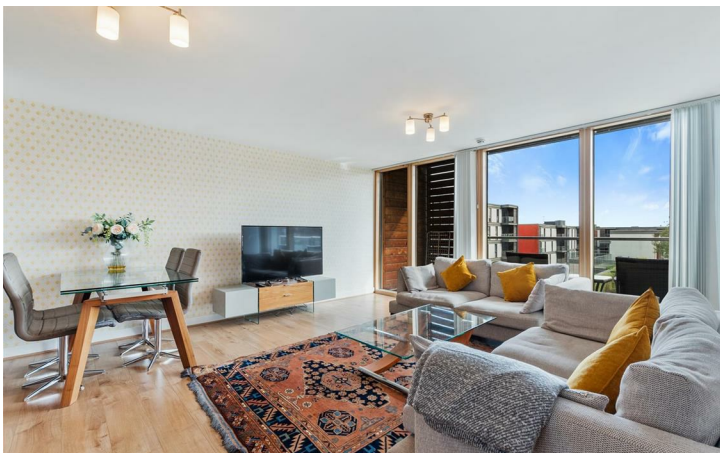
3



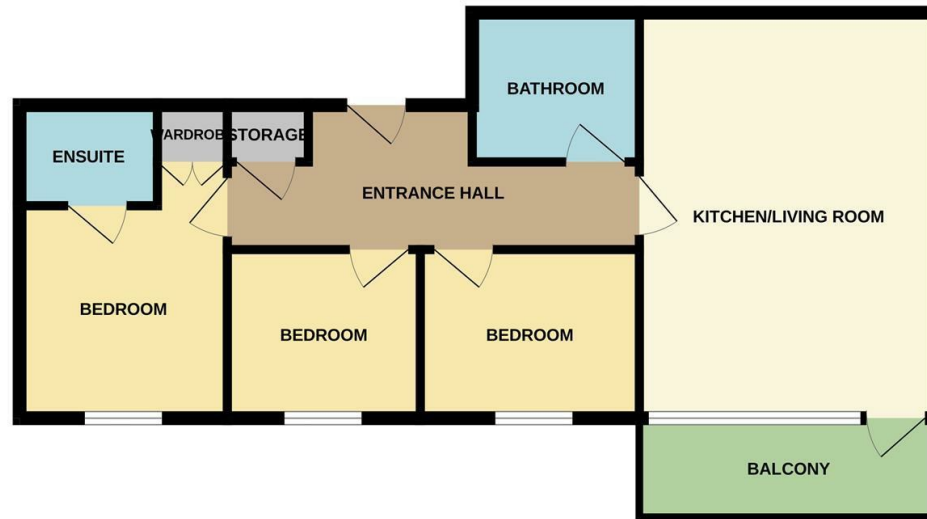
2



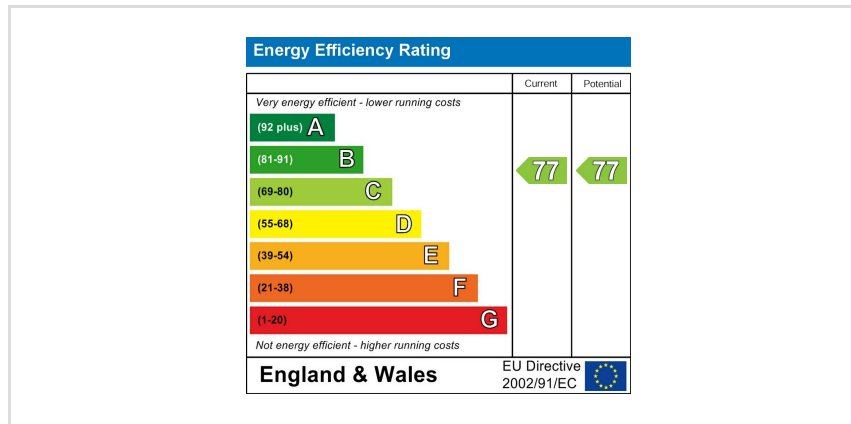
1



GROUND FLOOR



Whilst every attempt has been made to ensure the accuracy of the floor plan contained here, measurements of doors, windows, rooms and any other items are approximate and no responsibility is taken for any error, omission, or mis-statement. The plan is copyright to Simpson and Partners and is for illustrative purposes and should only be used as such by any prospective purchaser. The services, systems and appliances shown have not been tested and no guarantee as to their operability can be given.
Made with Metrebox ©2024





William Coulson

In Partnership With

Simpsons
Property Experts

Tel: 01908 040289

Email: william.coulson@simpsonspropertyexperts.co.uk

Web: <https://simpsonspropertyexperts.co.uk/our-locations/milton-keynes>

