

# TYBURN

PROPERTY CONSULTANCY

## HOLLAND PARK VILLAS

KENSINGTON  
W 8



A beautifully presented one bedroom apartment with secured private parking and a storage room in this prestigious development next to Holland Park.

The turnkey apartment offers an open-plan reception and kitchen accompanied by a master bedroom featuring built-in wardrobes. It is positioned in the main part of the development with direct access to the concierge and a range amenities including the gym, swimming pool, spa and cinema room.



Totalling approximately 629 sq. ft (58.4 sqm), in wonderful condition and has a high quality finish including hardwood flooring, polished stone, Italian marble, brass inlays, underfloor heating, comfort cooling, Lutron lighting, Dornbracht and Duravit bathroom fittings as well as a Home Automation system.

This distinguished development is approached via a private driveway and is looked after by a 24hr dedicated concierge and security teams. The internal gardens offer perfect serenity in addition to the spa. Further amenities include, fully fitted gymnasium, swimming pool, spa, cinema, games room and designated underground parking.



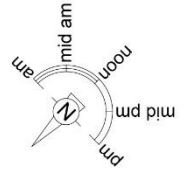
## LOCATION

This development is set in beautiful landscaped gated grounds just off Campden Hill and right next to the green spaces and woodlands of Holland Park.

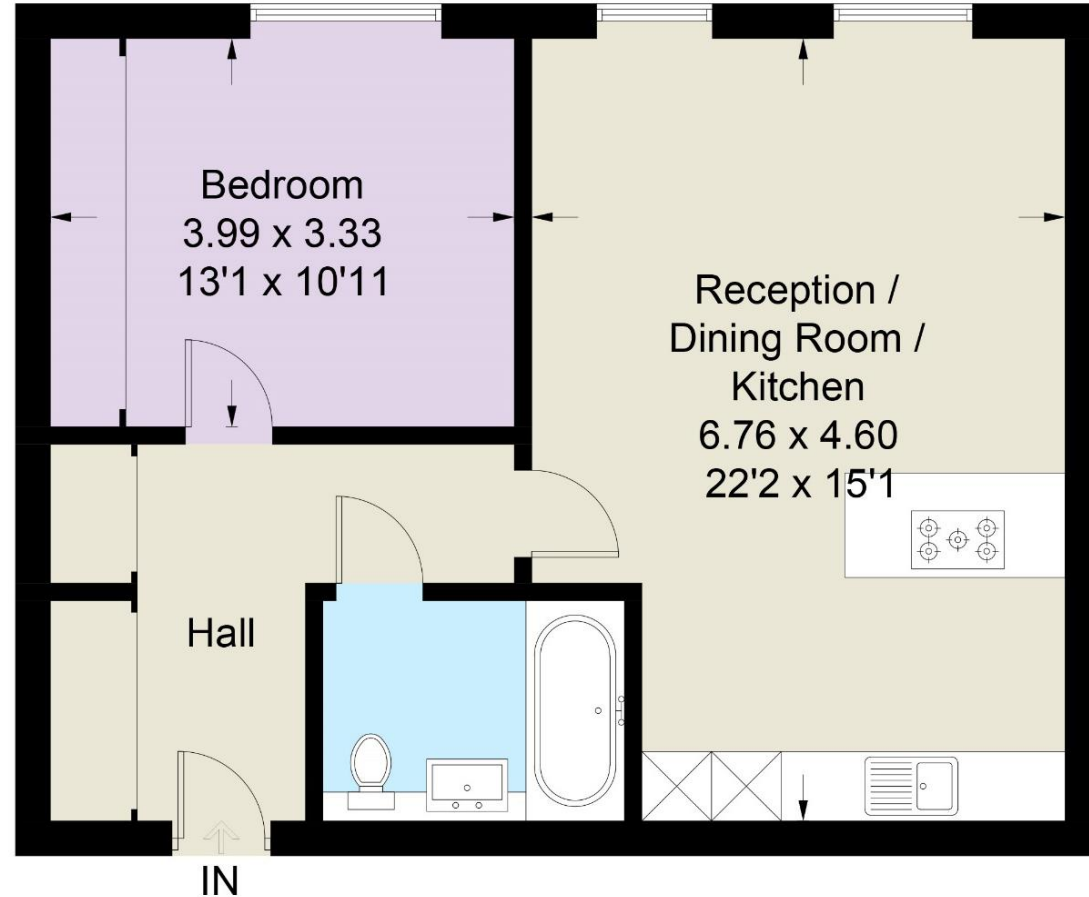
Positioned in between Kensington High Street and Notting Hill, there are a number of excellent restaurants nearby, such as the Michelin-starred KitchenW8, and many well-known fashion & food retailers including Wholefoods & Ottolenghi.

The area is also home to some of the capital's most highly regarded primary and preparatory schools such as Thomas's, Hawkesdown House, Holland Park School and Foxes as well as having regular and convenient transport links via the Underground Stations at High Street Kensington and Notting Hill Gate (Central, District & Circle Lines) connecting you with Knightsbridge, the City and the West End.

## Holland Park Villas, Campden Hill, W8



Approximate Area = 629 sq ft / 58.4 sq m



### First Floor

This plan is for layout guidance only. Not drawn to scale unless stated. Windows and door openings are approximate. Whilst every care is taken in the preparation of this plan, please check all dimensions, shapes and compass bearings before making any decisions reliant upon them. (ID982644)

## CONTACT

MOREAS MADANI

+44 (0)20 7088 8215

+44 (0)78 2578 2615

moreas@tyburn.com