



Ellis Brooke



125-127 Railway Terrace

, Rugby, CV21 3EY

Asking price £595,000

Located on Railway Terrace in Rugby, this impressive 13-bedroom House in Multiple Occupation (HMO) is a great rental investment. Its prime location, just a short walk from the train station and Rugby town centre, makes it a lucrative choice for tenants seeking convenience and connectivity.

The property generates a substantial monthly rental income of £5,338.67, attesting to its value as an income-producing asset. With 13 bedrooms, it caters to a diverse tenant base, ensuring consistent occupancy and rental income. The spacious layout offers a comfortable living environment, while its proximity to local amenities, public transportation, and the town centre adds to its desirability. Other benefits of the property are a recently installed fire alarm system and new boiler servicing the first floor rooms.

Viewing

Please contact our Rugby Office on 01788 221242 if you wish to arrange a viewing appointment for this property or require further information.



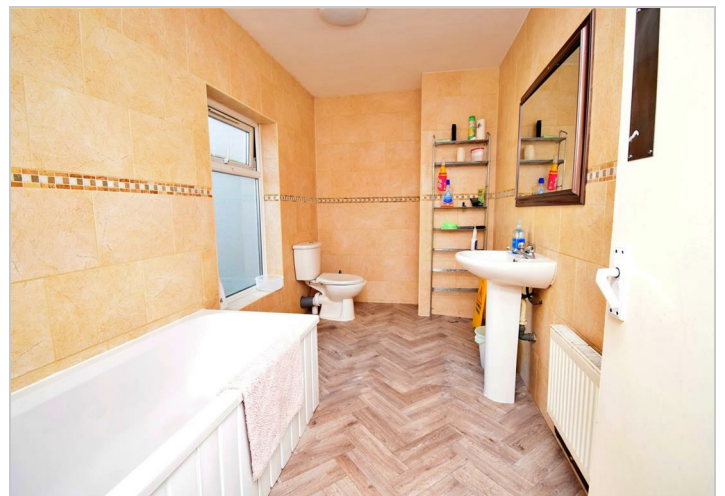
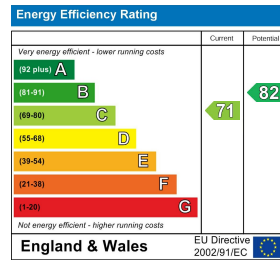
Floor Plan



Area Map



Energy Efficiency Graph



These particulars, whilst believed to be accurate are set out as a general outline only for guidance and do not constitute any part of an offer or contract. Intending purchasers should not rely on them as statements of representation of fact, but must satisfy themselves by inspection or otherwise as to their accuracy. No person in this firm's employment has the authority to make or give any representation or warranty in respect of the property.



10 Sir Frank Whittle Business Centre, Great Central Way, Warwickshire, CV21 3XH
Tel: 01788 221242 Email: info@ellisbrooke.co.uk ellisbrooke.co.uk