



# Ellis Brooke



## 10 Bath Street

, Rugby, CV21 3JF

**Offers in excess of £450,000**



5



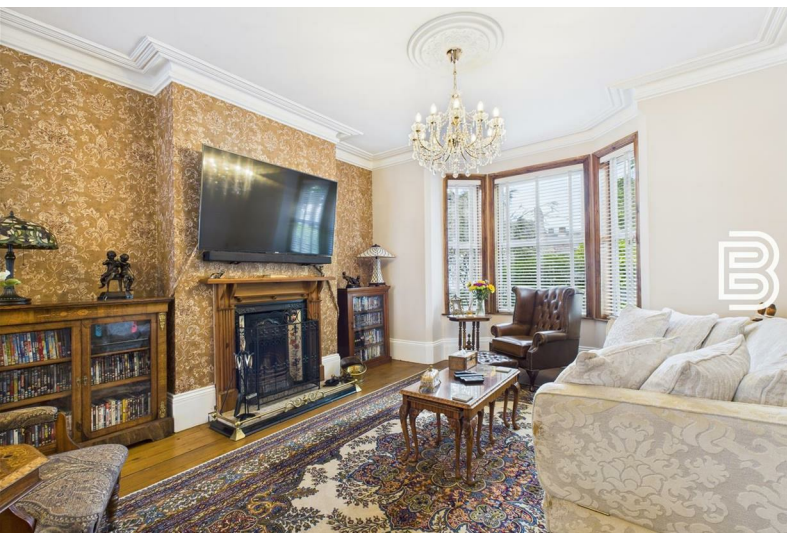
2



3



E





# 10 Bath Street

, Rugby, CV21 3JF

Offers in excess of £450,000



## Entrance Hallway

Solid wood front door with classic butlers doorbell. Glazed panel above with gold leaf house number insert. Hallway has pine flooring, original coving and cornicing. Stairs to first floor. Door to Lounge Dining Room, Door to Kitchen. Radiator.

## Lounge & Dining Room

Double glazed bay window to the front aspect. Wood floor. Two radiators. Original excellent condition cast iron open fire with tiled insets and wooden surround/mantel. Double glazed French Doors to the rear garden and side return. Original coving and skirting.

## Kitchen Dining Room

Two double glazed windows to the side aspect. Door into Rear Lobby. Karndean flooring to the kitchen area. Pine flooring to the dining area. Radiator. Half height Lincrusta wall coverings. Bespoke hand made base and eye level units. Inset oversize Belfast sink with extendable mixer tap. Oak worktops. Range cooker with extractor. Space for large fridge/freezer with units around. Pantry style cupboard housing new Worcester boiler (installed 2025). Integrated dishwasher.

## Rear Lobby

Double glazed door & window to the side. Karndean flooring. Radiator. Door into Utility and door into WC. Half height Lincrusta wall covering.

## WC

Pull flush low WC. Dado rail. Karndean flooring. Skylight.

## Utility Room

Double glazed window to the garden. Various eye level storage units. Space and plumbing for washing machine. Space for further appliances.

## First Floor Landing

Double glazed window to the side aspect. Stairs rising to top floor. Doors off to 4 bedrooms and main family bathroom. Wood floor. Landing storage cupboard.

## Bedroom One

Double glazed window to the front aspect. Radiator. Picture rail.

## Bedroom Two

Double glazed window to the rear aspect. Radiator. Pedestal wash hand basin.

## Bedroom Three

Double glazed window to the rear aspect. Storage cupboard. Radiator. Built in wardrobes.

## Bedroom Four

Double glazed window to the front aspect. Built in cupboard/wardrobe. Radiator. Wood floor.

## Bathroom

Double glazed window to the side aspect. Half height Lincrusta wall covering. Claw footed bath with detached mixer tap and telephone style

attachment. Enclosed shower cubicle. Airing cupboard. Ornate low flush WC. Ornate pedestal wash hand basin with decorative tiled splashback. Extractor. Wood floor. Ornate radiator.

#### Top Floor Landing

Velux window. Doors off to Bedroom 5 and additional bathroom.

#### Bedroom Five

Velux window. Radiator. Two doors to eaves storage areas (front and rear of building). Built in wardrobe/cupboard.

#### Bathroom

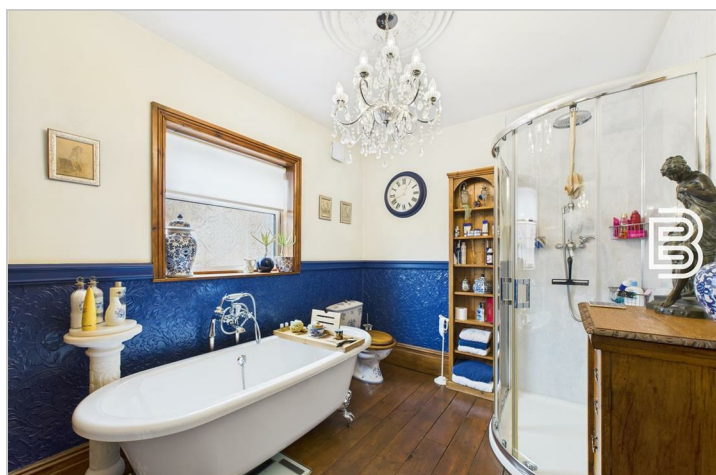
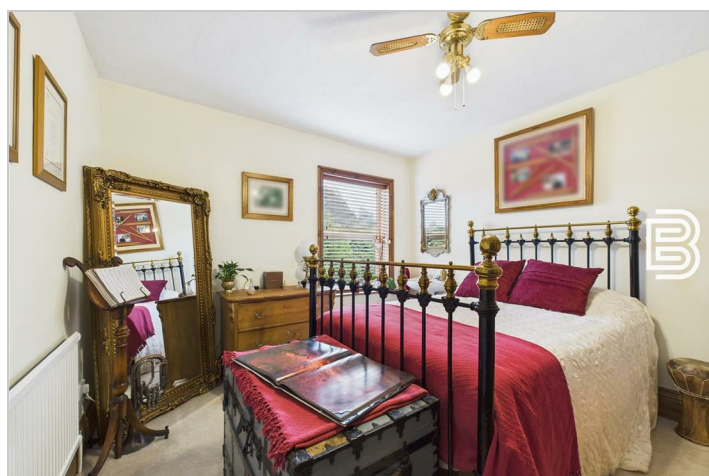
Velux window. Panelled bath. Enclosed shower cubicle. Pedestal wash hand basin. Low flush WC. Radiator. Extractor. Corner shelved storage area.

#### Enclosed Frontage

Enclosed by low level brick wall to 3 sides. Low maintenance stones. Several mature small trees and shrubs. Gated side access leading to rear garden. Two steps up to recess porch.

#### Rear Garden

Beautiful walled rear garden. Gated side access. Substantial patio with partially covered seating area. Outside power and lighting. Lawned area with mature trees and shrub borders plus shed. Covered side return with wooden bin store.





Road Map



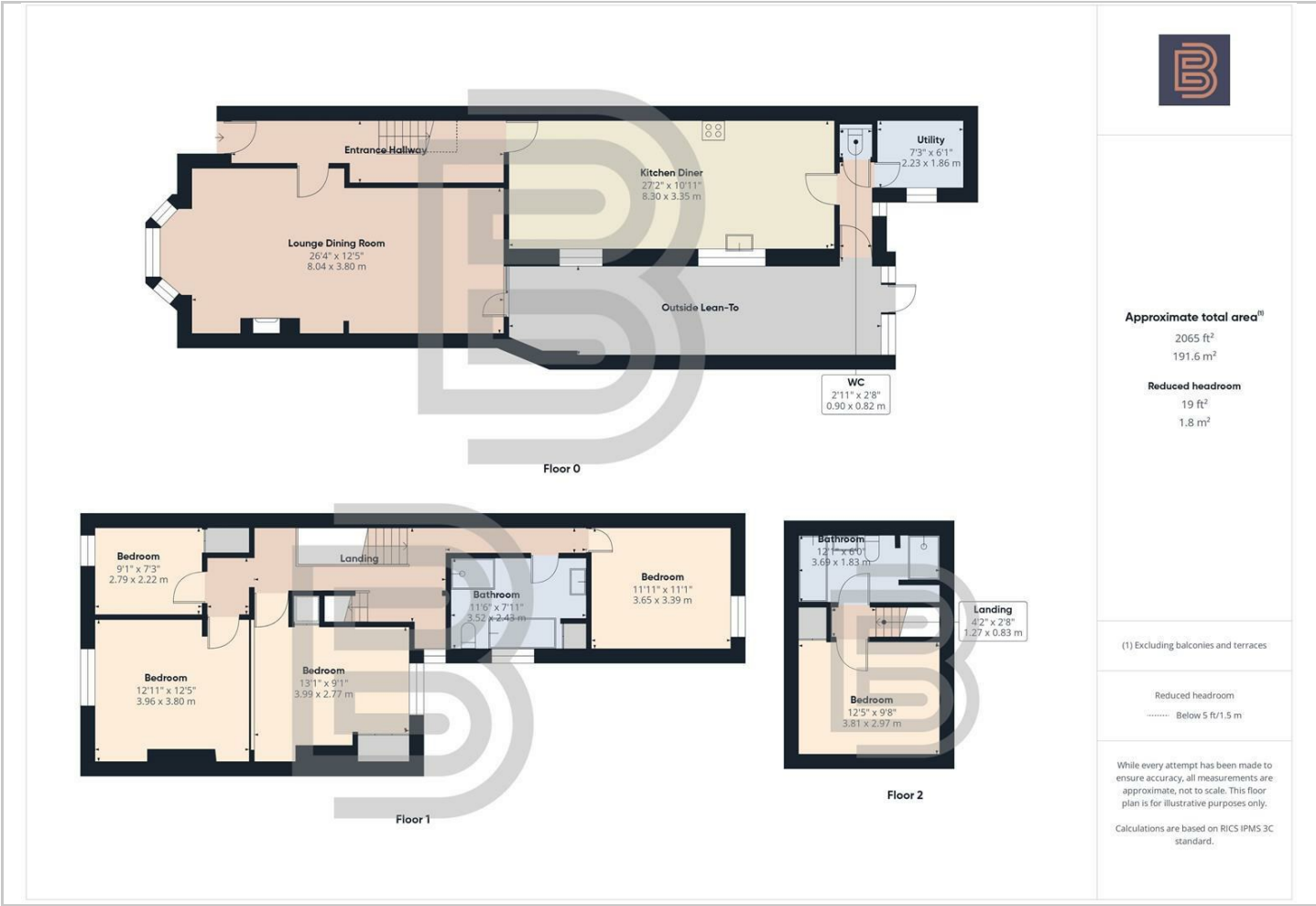
Hybrid Map



Terrain Map



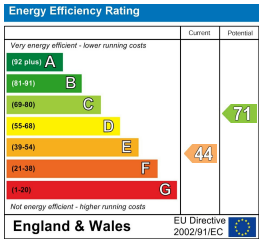
Floor Plan



Viewing

Please contact our Rugby Office on 01788 221242 if you wish to arrange a viewing appointment for this property or require further information.

Energy Efficiency Graph



These particulars, whilst believed to be accurate are set out as a general outline only for guidance and do not constitute any part of an offer or contract. Intending purchasers should not rely on them as statements of representation of fact, but must satisfy themselves by inspection or otherwise as to their accuracy. No person in this firm's employment has the authority to make or give any representation or warranty in respect of the property.



10 Sir Frank Whittle Business Centre, Great Central Way, Warwickshire, CV21 3XH  
Tel: 01788 221242 Email: [info@ellisbrooke.co.uk](mailto:info@ellisbrooke.co.uk) [ellisbrooke.co.uk](http://ellisbrooke.co.uk)