



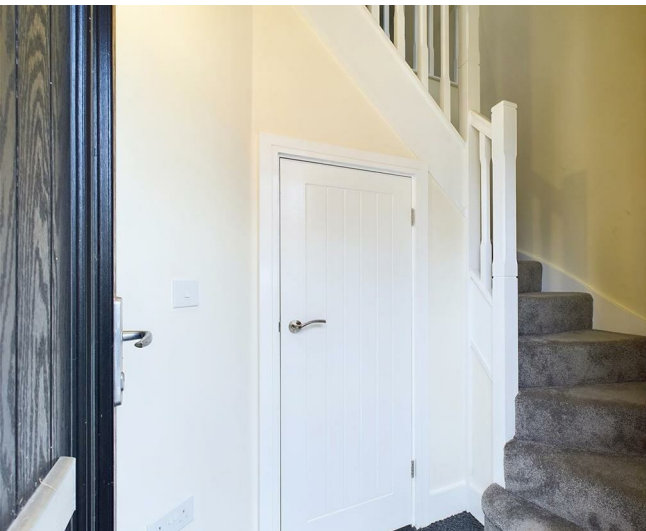
Ellis Brooke



2 Hansen Close

, Rugby, CV21 1RE

Guide price £175,000



2 Hansen Close

, Rugby, CV21 1RE

Guide price £175,000



Entrance Lobby

5'4" x 3'4" (1.63m x 1.02m)

Composite front door with double glazed panel. Stairs up to main accommodation. Under-stairs cupboard with light, power and telephone point.

Upstairs Living Space

Two windows to the front aspect and one to the rear. Two radiators. Opens into Kitchen. Door to Bedroom. Door to Bathroom. Magnetic wall area. TV and telephone points. Additional storage cupboard.

Kitchen

11'6" x 6'1" (3.51m x 1.85m)

Double glazed window to the front aspect. Range of base and eye level units with work surface over. Stainless steel sink/drain. Integrated oven with gas hob and extractor. Space for fridge/freezer. Space and plumbing for washing machine. Gas combination boiler enclosed into cupboard. USB equipped plug sockets.

Bedroom

10'3" x 9'6" (3.12m x 2.90m)

Double glazed window to the front aspect. Radiator. TV point. Fitted wardrobe.

Bathroom

6'10" x 5'6" (2.08m x 1.68m)

Double glazed window to the rear aspect. Heated towel rail. Panelled bath with shower over. Tiling to splashbacks. Low flush WC.

Pedestal wash hand basin. Extractor. Shaver point.

Garage

Metal up and over door. Power and light connected. Located underneath No.3 Hansen Close.

Outside

Shallow low maintenance frontage with shrubs and path leading to front door. Shared bin store area to the side of the garage.

Parking Notes

Free of charge permits also available for on-street parking.

Lease Notes

Lease Term is 250 years from 2019

NO SERVICE CHARGE PAYABLE



Road Map



Hybrid Map



Terrain Map



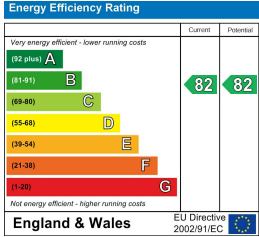
Floor Plan



Viewing

Please contact our Rugby Office on 01788 221242 if you wish to arrange a viewing appointment for this property or require further information.

Energy Efficiency Graph



These particulars, whilst believed to be accurate are set out as a general outline only for guidance and do not constitute any part of an offer or contract. Intending purchasers should not rely on them as statements of representation of fact, but must satisfy themselves by inspection or otherwise as to their accuracy. No person in this firm's employment has the authority to make or give any representation or warranty in respect of the property.



10 Sir Frank Whittle Business Centre, Great Central Way, Warwickshire, CV21 3XH
Tel: 01788 221242 Email: info@ellisbrooke.co.uk ellisbrooke.co.uk