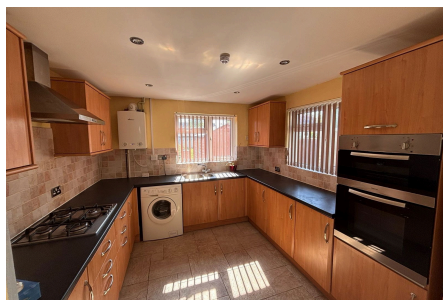


Lay Avenue, Berinsfield, OX10

Guide Price £350,000

 3  1  2



Situated on a side road in Berinsfield, overlooking the green, this semi-detached three bedroom family home is offered for sale with no onward chain. The property is in need of renovation and offers an excellent opportunity to create a wonderful family home. The property offers potential to extend subject to the necessary planning consent and benefits from off street parking, a private garden with pedestrian side access and good internal accommodation. The accommodation comprises, entrance porch, kitchen/dining room and sitting room with French doors to the rear garden. The first floor offers three bedrooms, family bathroom and a separate w.c. There is additional storage in the loft space above. To the exterior is off street parking, front and rear garden with pedestrian access and open views over the green and park.

Key Features

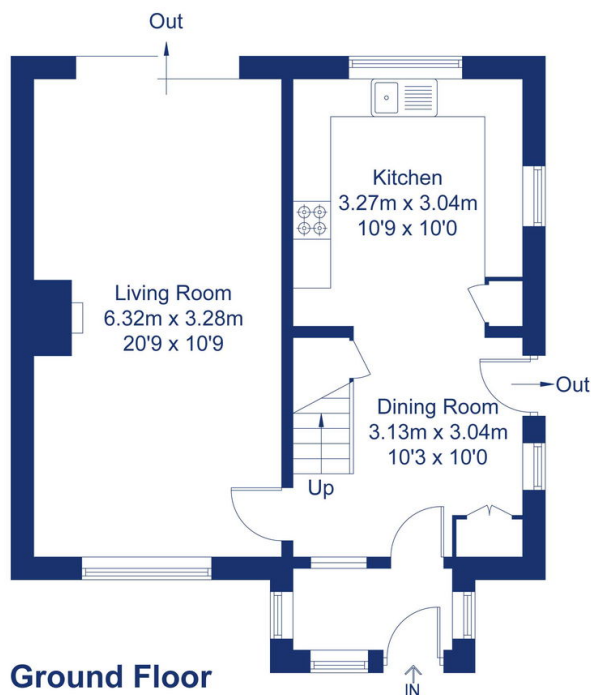
- Chain free sale offering vacant possession
- Three bedrooms
- Views over the green
- 908 sq.ft of internal accommodation
- EPC rating D
- Probate sale
- Semi-detached home with off street parking
- Rear private garden with pedestrian side access
- Extension opportunities subject to planning permission
- Excellent local amenities within walking distance in the village



FORTNUMS
ESTATES

Lay Avenue, OX10

Approximate Gross Internal Area = 84.40 sq m / 908 sq ft
For identification only - Not to scale



Floor plan produced in accordance with RICS Property Measurement Standards.
Not to scale, for illustration and layout purposes only.
© Mortimer Photography. Produced for Fortnums Estates.
Unauthorised reproduction prohibited.