

Fieldside, Upton, OX11

Guide Price £595,000

🛏 3 🚿 1 🛋 2



This three bedroom, semi-detached family home benefits from PLANNING PERMISSION to create a one bedroom house, ideal as an annexe or assisting first time buyers getting on the property ladder. Planning also includes extending the existing property to the rear to create a larger dwelling. Additional benefits include a large garden and off street parking in the highly sought after village of Upton.

Key Features

- Chain free sale
- Off street parking
- Large rear garden
- Outbuildings to the rear of the plot
- Two reception rooms
- Planning permission granted for one bedroom dwelling
- Three bedrooms
- Village location in the beautiful village of Upton
- EPC rating F
- Planning ref: [https: P23/V2689/FUL](https://p23/v2689/ful)

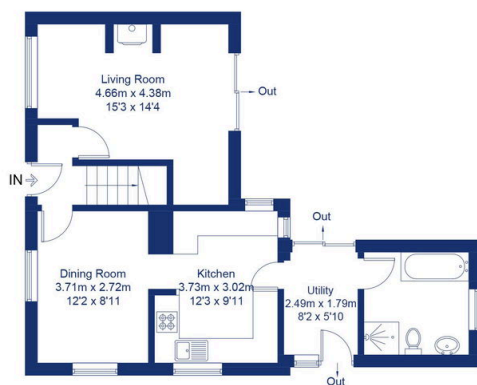
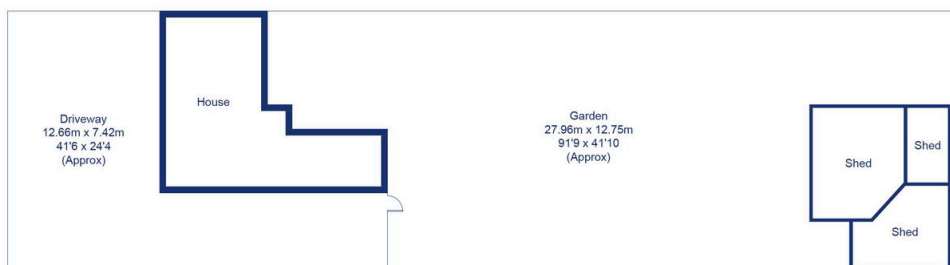


FORTNUMS
ESTATES

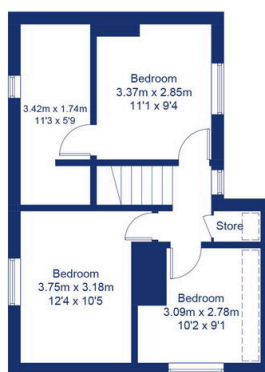
Fieldside, OX11

Approximate Gross Internal Area = 98.0 sq m / 1055 sq ft
Sheds = 46.6 sq m / 502 sq ft

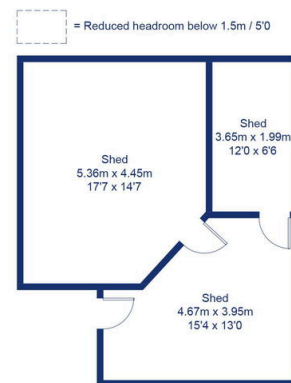
For identification only - Not to scale



Ground Floor



First Floor



(Not Shown In Actual Location / Orientation)

Floor plan produced in accordance with RICS Property Measurement Standards.
© Mortimer Photography. Produced for Fortnums Estates.
Unauthorised reproduction prohibited. (ID1136973)