

2 Bedroom Apartment
Darsley Drive
London, SW8 2BA

£450,000

www.sealyestates.co.uk



Darsley Drive, London, SW8 2BA

Sumner Court is a modern residential building situated in the SW8 2BA area. It offers a comfortable and contemporary living space with a 2 bedroom layout.

The flat is thoughtfully designed with space in mind and ample natural light. Transport options in the SW8 2BA area are convenient, making it easy to commute to various destinations. The nearest public transportation links include several bus stops and Vauxhall Underground and Rail Station, which provides access to the Victoria Line and Southwestern Railway services. This allows for easy connections to London's extensive transport network.

Families with children will find several reputable schools in the surrounding area. Some notable schools include Wyvil Primary School, The Westminster School, and Saint John Bosco College. These schools offer quality education, ensuring a nurturing environment for academic growth. There are a range of shops and amenities available nearby for your everyday needs. The nearby Sainsbury's and Tesco supermarkets provide convenient grocery shopping options, while a variety of local shops and convenience stores are easily accessible.

Additionally, there are several restaurants, cafes, and pubs in the area, offering a diverse range of dining options to explore. In terms of the community, the SW8 2BA area features a vibrant and diverse neighbourhood. You can

470A Green Lanes London N13 5PA

02036332426

Branch Fax

hello@sealyestates.co.uk

Branch_Website www.sealyestates.co.uk

Sumner Court, Darsley Drive, SW8 2BA

Approximate Gross Internal Area = 60.9 sq m / 655 sq ft

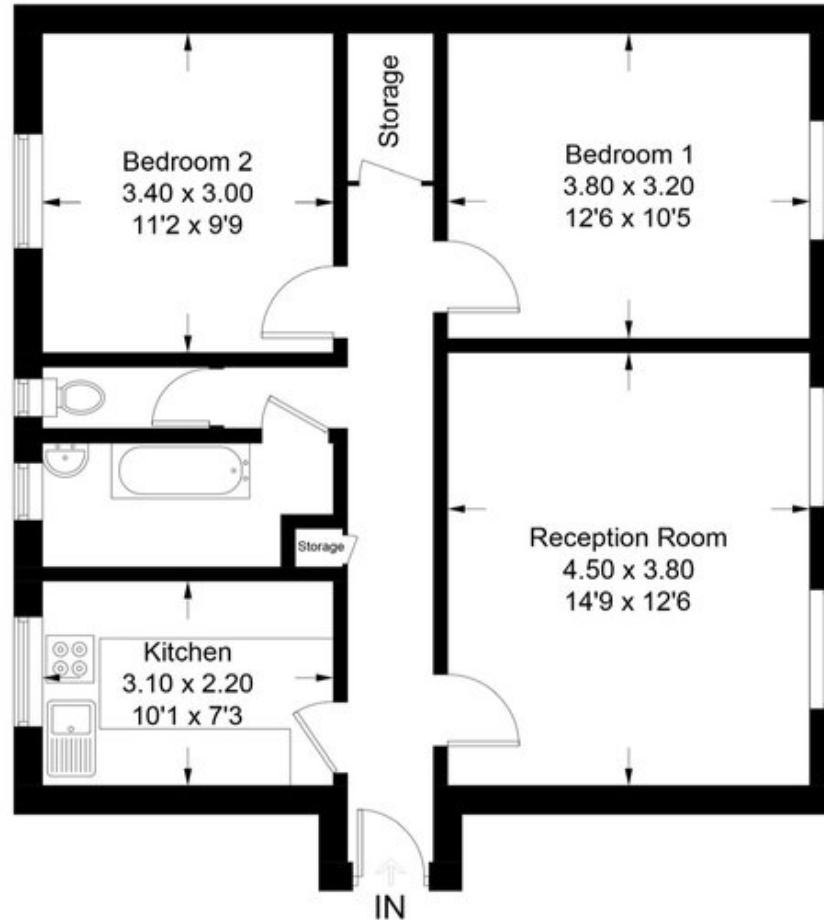


Illustration for identification purposes only, measurements are approximate, not to scale. floorplansUsketch.com © (ID1016851)