

5&6 Kendrick Mews

South Kensington
SW7 3HG

TO LET

685 sq ft
Ground Floor Office





Ground floor office



Ground floor meeting room



DESCRIPTION

Benefitting from excellent natural light, the office occupies the ground floor of this stunning terraced mews building.

The office benefits from a private meeting room, shared kitchenette, WC and shower facilities located on the ground floor.

TERMS

Available on a new two-year lease, minimum twelve month term with a rolling landlord break with three months' notice after this time.

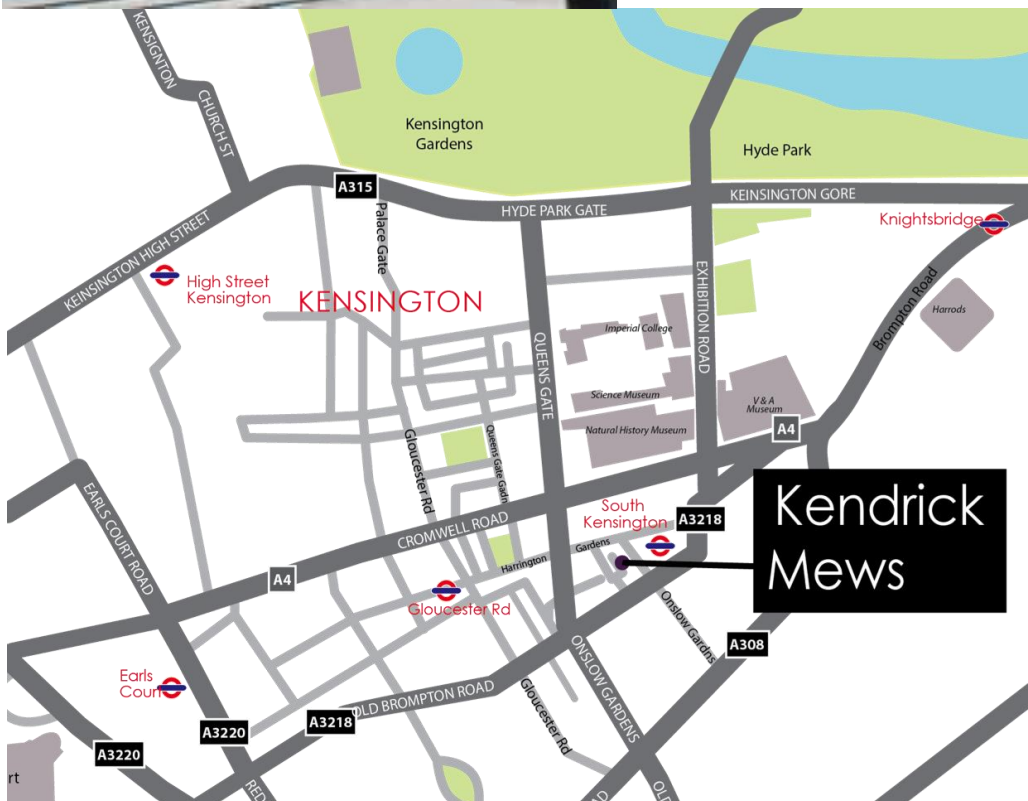
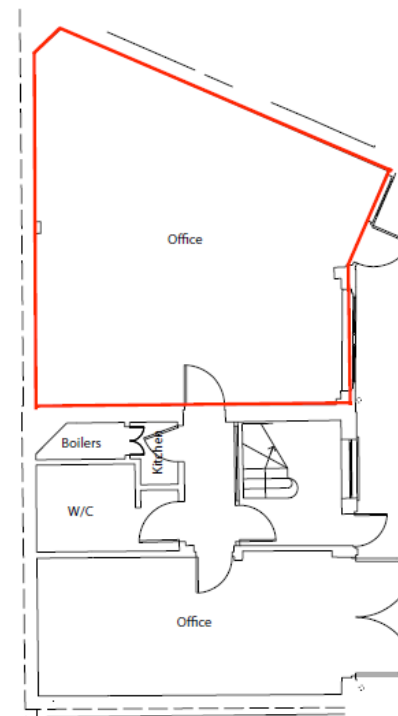


LOCATION

The property is situated on the west side of Kendrick Mews close to Old Brompton Road within 4 minutes' walk of South Kensington tube station (Circle, District & Piccadilly Lines), that is just 2 stops (11 minutes) from Green Park.

Located within 2 minutes' walk of excellent shops and amenities of Old Brompton Road which includes The Hummingbird Bakery, Byron Burger and Waitrose.

Cromwell road, to the north, gives easy access to Heathrow to the west and Knightsbridge and the West End just east.



ACCOMODATION

OFFICE	SIZE SQ FT	RENT PCM	RATES PER SQ FT	SERVICE CHARGE PCM (Inclusive of utilities)
Ground floor	685	£3,424.19	£25.50	£230.20

EPC
Rated C

Misrepresentation Act 1967: These particulars are believed to be correct but their accuracy is not guaranteed and they do not form part of any contract. Unless otherwise stated, all prices and rents are quoted exclusive of VAT. Brochure May 2022

CONTACT

Giles Harker

gharker@frostmeadowcroft.com

020 8748 1200

www.frostmeadowcroft.com

frost
meadowcroft