



# The Queens Club

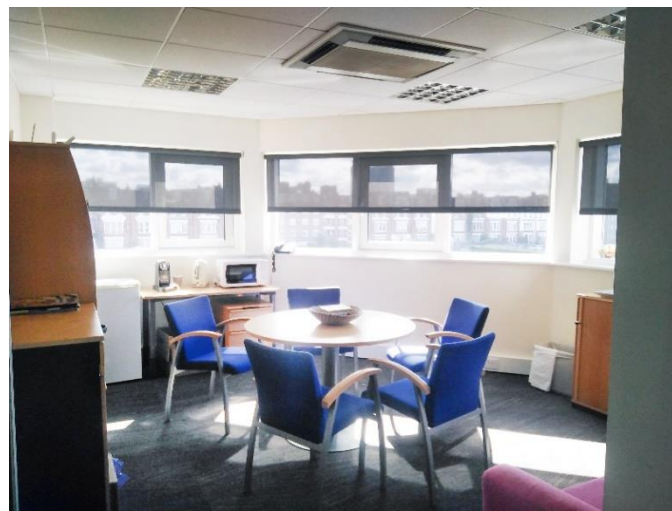
Palliser Road  
West Kensington

W14 9EQ

**TO LET**

2,155 sq ft

frost  
meadowcroft



## RENT

£37.50 per sq ft

## RATES

Approximately £12.71 per sq ft

*(payable to the London Borough of Hammersmith and Fulham)*

## SERVICE CHARGE

£6.00 per sq ft

## DESCRIPTION

Internally the offices provide good quality open plan accommodation, with two purpose-built boardrooms which overlook the Queens tennis club.

- Kitchen
- Bike racks
- 4 parking spaces, on a separate licence of £2,000 per annum per space
- Outdoor terrace

## AVAILABILITY

FLOOR	SQ FT
First Floor	2,155 sq ft

## LOCATION

The offices are located within the grounds of the prestigious Queens tennis club, which is located on the Palliser Road, a short walk from Barons Court (Underground Station).

## TRANSPORT LINKS

BARONS COURT (Piccadilly & District)	-	3 min walk
WEST KENSINGTON (District)	-	9 min walk
HAMMERSMITH (District, Piccadilly, Hammersmith & City)	-	22 min walk

The Queen's Club is easily reached by road from the M3, M4, M40 and A40, with good links to Heathrow via the M4 (35-minute drive).

**Misrepresentation Act 1967:** These particulars are believed to be correct but their accuracy is not guaranteed and they do not form part of any contract. Unless otherwise stated, all prices and rents are quoted exclusive of VAT (Brochure date October 2020)



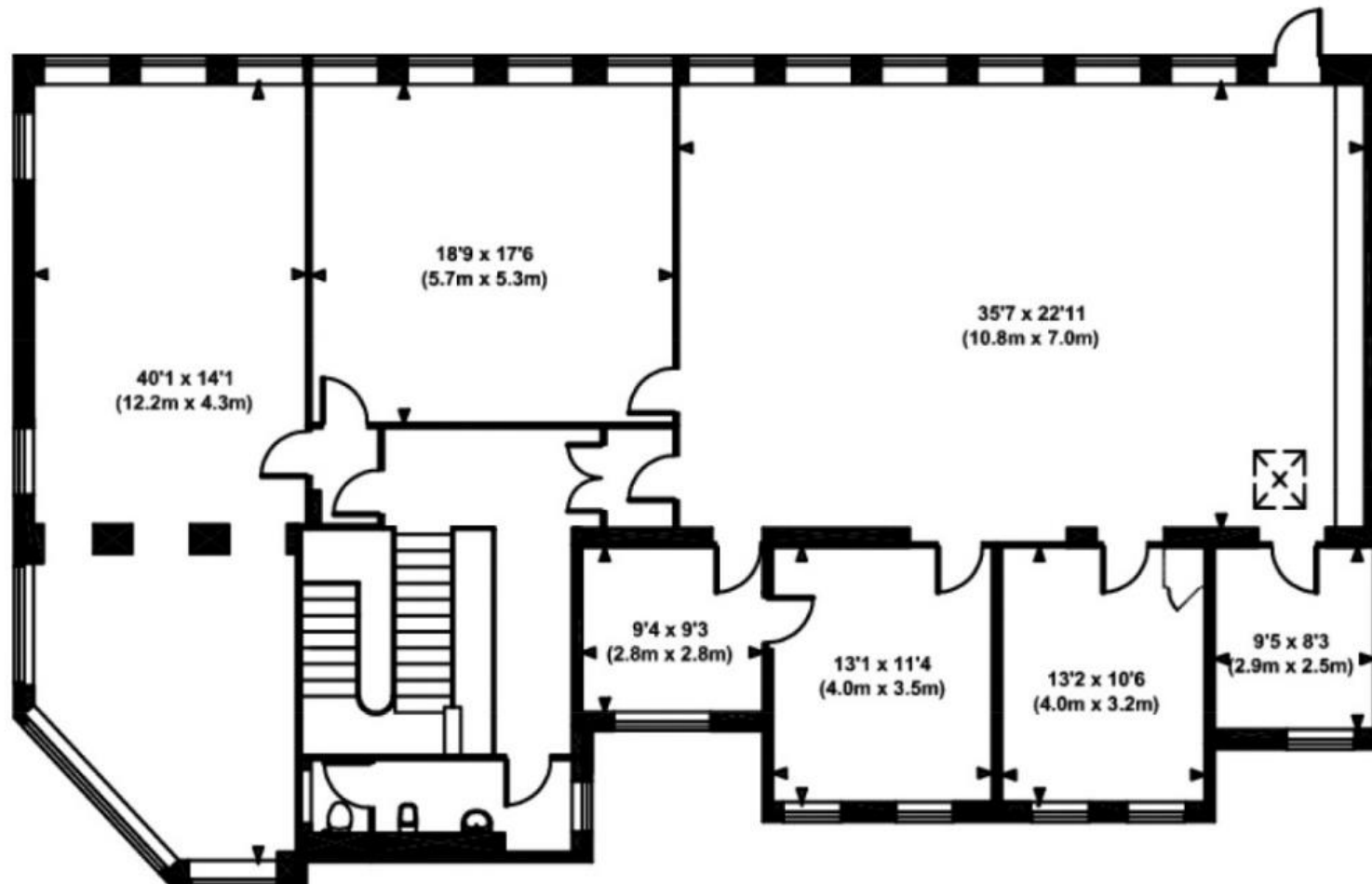
VIEWINGS BY APPOINTMENT  
THROUGH SOLE AGENT

Giles Harker & Shaun Wolfe  
gharker@frostmeadowcroft.com  
swolfe@frostmeadowcroft.com  
[www.frostmeadowcroft.com](http://www.frostmeadowcroft.com)

020 8748 1200

frost  
meadowcroft

# PLANS



First floor