



Oakwood

Horsham, RH13 8JQ

Guide price £395,000

This good size extended 3 bedroom end terrace house, which is offered with vacant possession provides approximately 1100sqft of family living accommodation and is situated on a corner plot with generous gardens to the front and rear plus single garage.

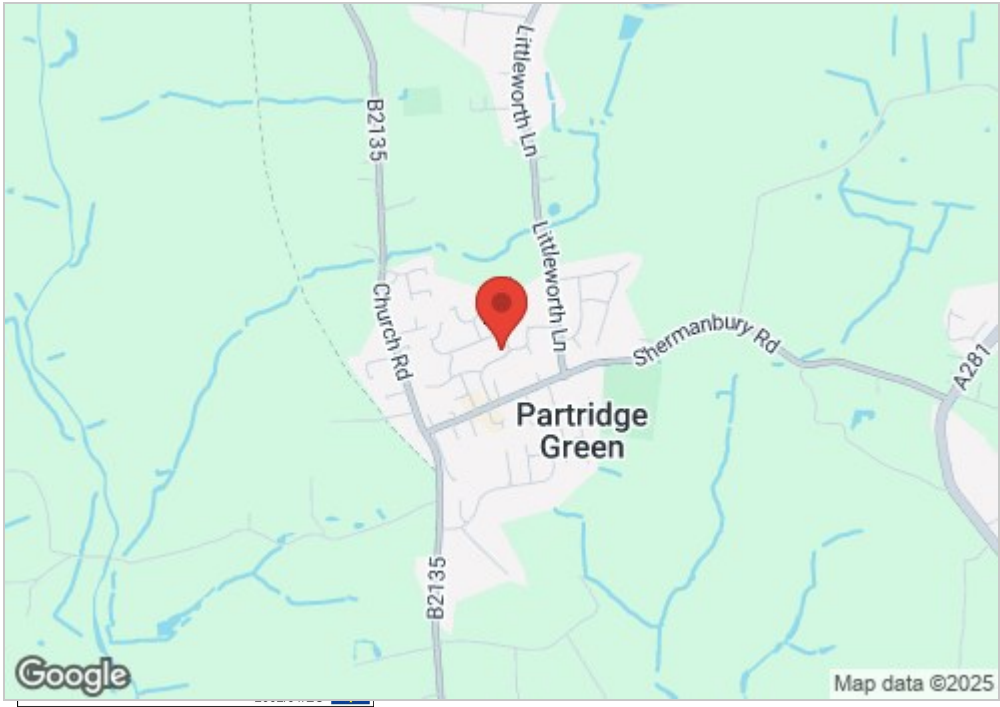
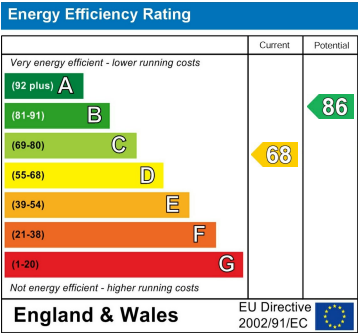
The property has been extended on the ground floor to create a spacious 24 x 8'10 kitchen / dining room, 23 x 11 living room plus utility room. On the first floor are 3 bedrooms plus a family bathroom.

The popular village of Partridge Green provides a good range of local shops including: Post Office Stores, Bakers and Well Known Butchers other local amenities include Vets & Doctors Surgery plus Primary School.

The village of Partridge Green is a short drive from the larger village of Henfield to the South and is within easy driving distance of the A/M23, Gatwick Airport and mainline railway stations at Hassocks and Horsham.

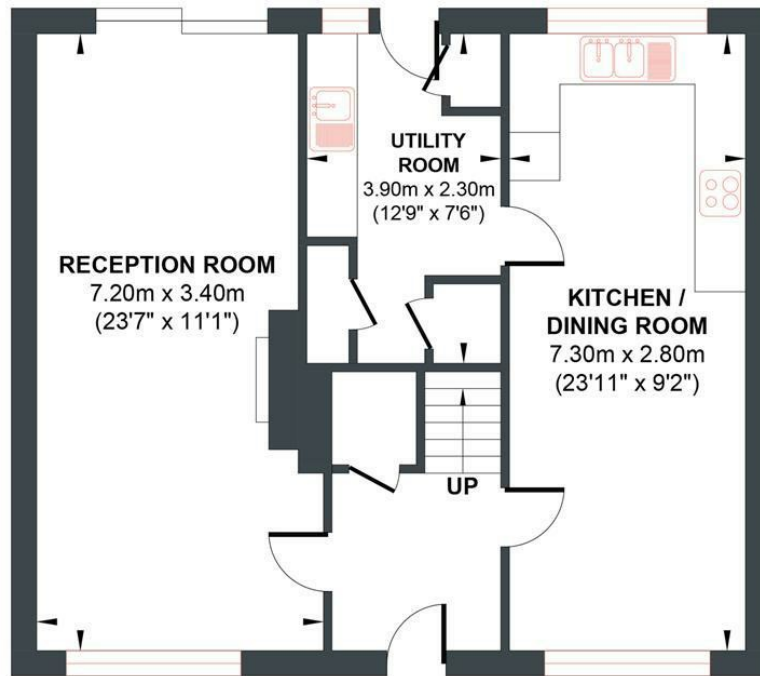


- End Of Chain
- Extended 3 Bedroom End Terrace
- Good Size Corner Plot Garden Plus Garage
- Easy Reach Of Local Shops & Primary School
- Further Scope For Extension



OAKWOOD

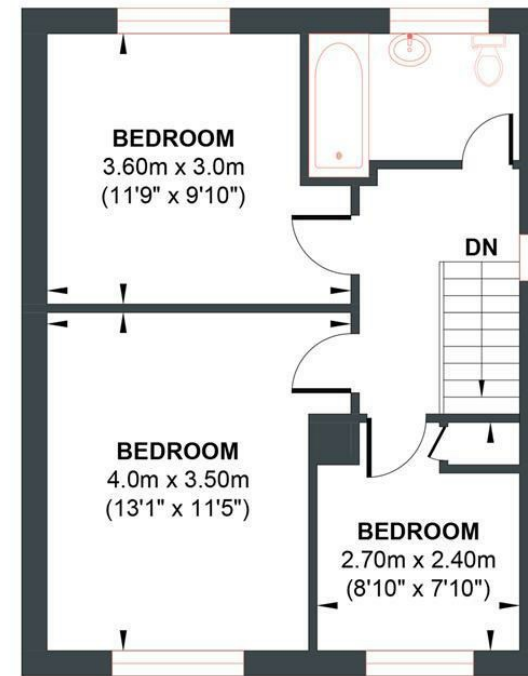
Approx. Gross Internal Floor Area 102.2 sq m / 1100.06 sq ft
Illustration for identification purposes only, measurements are approximate, not to scale.



GROUND FLOOR

Approximate Floor Area

660.04 sq ft
(61.32 sq m)



FIRST FLOOR

Approximate Floor Area

440.02 sq ft
(40.88 sq m)



Foster & Co and their clients give notice that:

These sales particulars do not constitute any part of an offer of contract and are for guidance for prospective purchases only and should be not relied upon as a statement of fact.

We are not to be held responsible for material information that has not been given to us by our client at the time of marketing.

All measurements are approximate

