



FOSTER
& CO.

Saltings Way

Upper Beeding, BN44 3JH

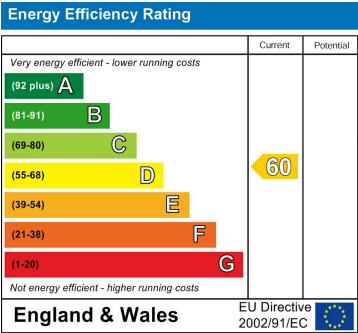
Guide price £415,000

Modern finished three bedroom semi-detached family home. Situated on Salting's Way, in the heart of Upper Beeding. Entering the property into the light and airy hallway with useful storage cupboard, the ground floor is arranged to offer a great size living dining room with French doors leading out to the low maintenance rear garden. The contemporary fitted kitchen overlooks the garden and is located off the dining room with a great amount of wall and base units and space for appliances.

The first floor offers large master bedroom located at the front of the property, an additional double bedroom with built in wardrobe space and a further single bedroom. The modern three-piece family bathroom services the house and is located at the rear of the property.

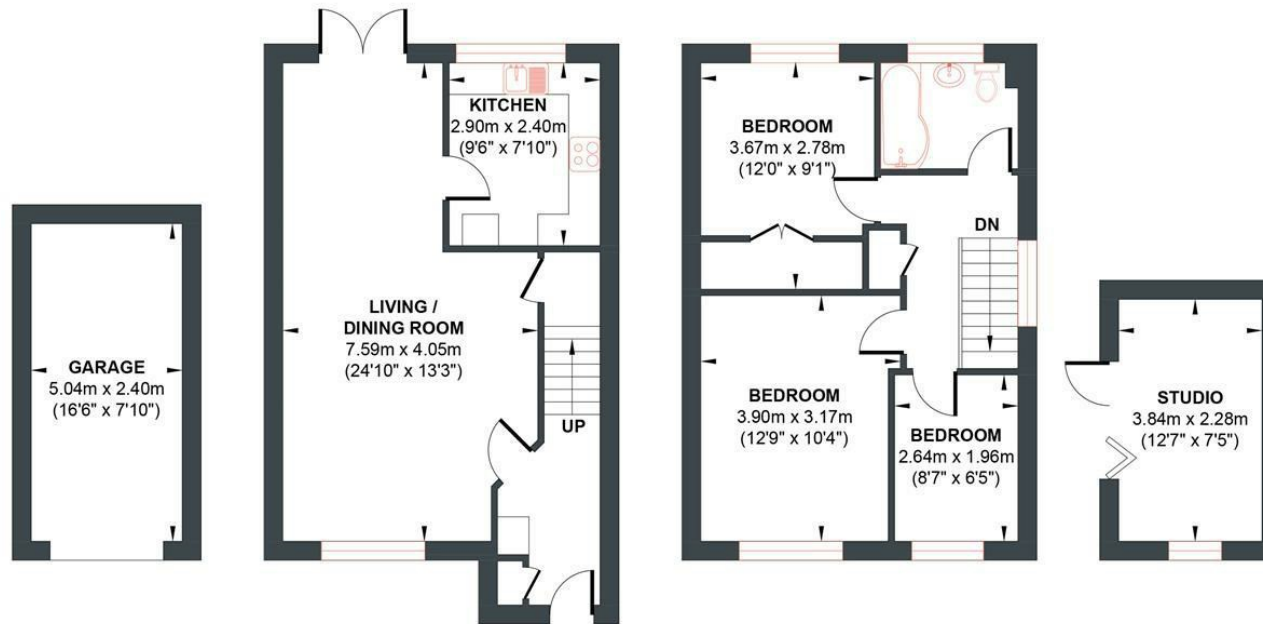
The private low maintenance rear garden is laid to patio with high quality close board fencing and garden room with full insulation, electrics and bi-folding doors, a great space for a home office or gym. This property also has the additional benefit of a garage in the compound.

- Semi Detached
- Three Bedrooms
- Garage
- Off street parking
- Log Cabin making an Ideal Home Office / Gym
- Modern finish
- Open Plan Living Dining Room
- Beautiful Village Location



SALTINGS WAY

Approx. Gross Internal Floor Area (Excluding Garage / Studio) 78.15 sq m / 841.19 sq ft
Illustration for identification purposes only, measurements are approximate, not to scale.



GARAGE

GROUND FLOOR

FIRST FLOOR

STUDIO

Approximate Floor Area
130.24 sq ft
(12.10 sq m)

Approximate Floor Area
429.48 sq ft
(39.90 sq m)

Approximate Floor Area
411.71 sq ft
(38.25 sq m)

Approximate Floor Area
94.29 sq ft
(8.76 sq m)



Foster & Co and their clients give notice that:

These sales particulars do not constitute any part of an offer of contract and are for guidance for prospective purchases only and should be not relied upon as a statement of fact.

We are not to be held responsible for material information that has not been given to us by our client at the time of marketing.

All measurements are approximate



