

Skyview Cottage High Street

Henfield, BN5 9HN

Guide price £305,000

A superb recently constructed 2 bedroom detached single storey property boasting South Facing garden and off road parking, situated in a private tucked away location in the heart of Henfield village.

Skyview Cottage is a contemporary property built to a high standard with quality fittings throughout. Accessed through a pair of wooden gates, that open onto a parking space with electric car charging point and wooden storage shed. The property provides 2 bedrooms both with remote control sky lights, one with useful storage cupboard, Wet room with rainfall shower, Open plan Living / Kitchen / Dining Area with Bi-Fold doors opening onto the South Facing Garden.

The property also benefits from underfloor heating throughout, newly refitted kitchen with built in appliances and instant hot water tap, Bi-Fold doors opening onto the Garden.

Henfield High Street with its range of shops, services and Pubs is literally within a 2 minute walk. The village also has a library, sports and health centre. A regular bus service to both Brighton and Horsham operates from the village High Street and Hassocks mainline train station is within a 15 minute drive. The A/M23 and Gatwick Airport are also within easy driving distance.

Internal Viewing Is Highly Recommended

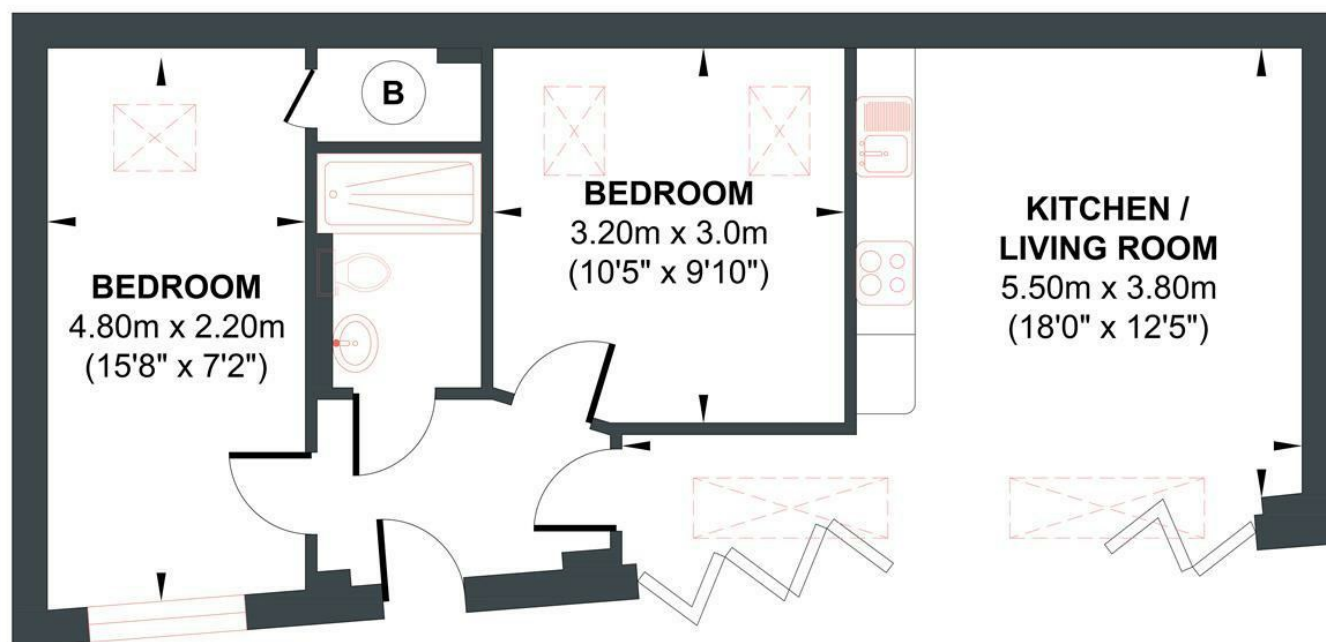
- Recently Constructed Contemporary 2 Bedroom Single Storey Detached Property
- Off Road Parking
- Underfloor Heating
- South Facing Garden
- Tucked Away Location In The Heart Of The Village
- Newly Refitted Kitchen With Built In Appliances

Energy Efficiency Rating		
	Current	Potential
Very energy efficient - lower running costs		
(92 plus) A		
(81-91) B		
(69-80) C		
(55-68) D		
(39-54) E		
(21-38) F		
(1-20) G		
Not energy efficient - higher running costs		
England & Wales		
EU Directive 2002/91/EC		



HIGH STREET

Approx. Gross Internal Floor Area 46.79 sq m / 503.64 sq ft
Illustration for identification purposes only, measurements are approximate, not to scale.



Approximate Floor Area
503.64 sq ft
(46.79 sq m)