



Littleworth Lane

Partridge Green, RH13 8JF



Littleworth Lane

Partridge Green, RH13 8JF

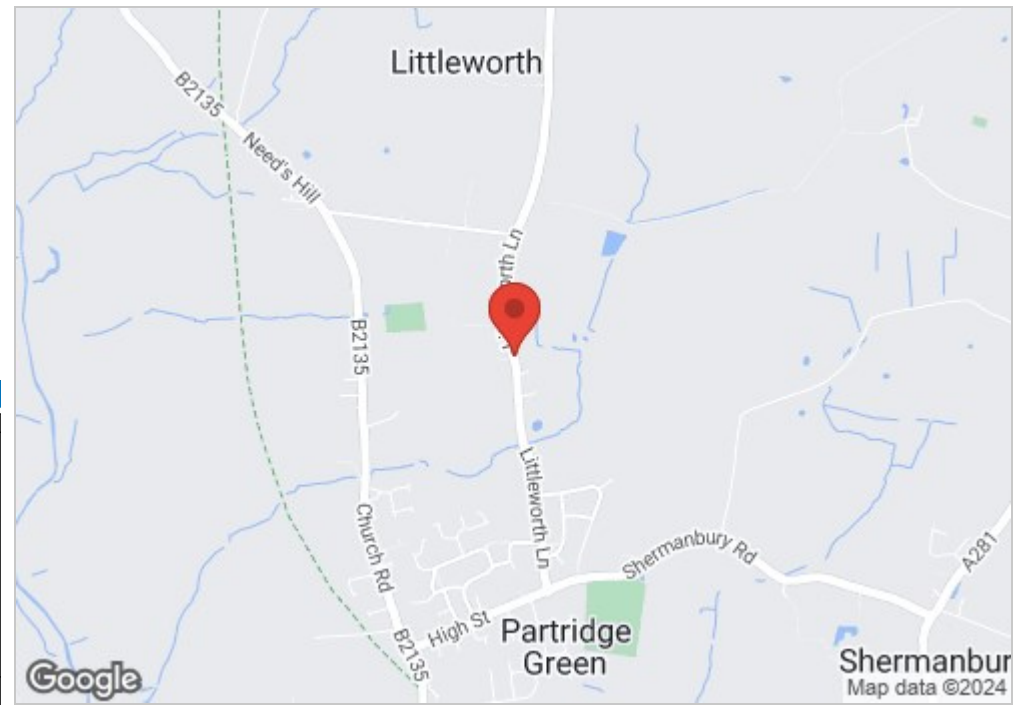
Asking price £945,000

A beautifully presented four bedroom detached bungalow, set in generous gardens located on the semi-rural outskirts of Partridge Green, offering truly versatile accommodation.



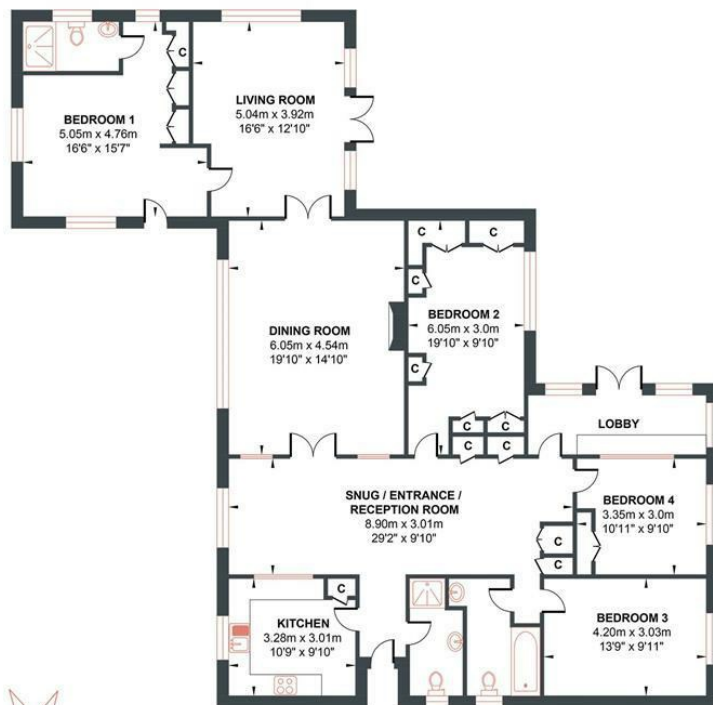
- Beautifully presented Detached Bungalow
- Four Bedrooms
- Fabulous Kitchen
- Air conditioning to some rooms
- Double garage
- Large Gardens
- Three Bathrooms
- Highly Adaptable accommodation
- Useful outbuildings including office
- Close to countryside walks.

Energy Efficiency Rating		
	Current	Potential
<i>Very energy efficient - lower running costs</i>		
(92 plus) A		
(81-91) B		
(69-80) C		
(55-68) D		
(39-54) E		
(21-38) F		
(1-20) G		
<i>Not energy efficient - higher running costs</i>		
England & Wales		
EU Directive 2002/91/EC		



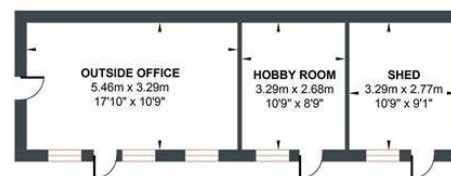
LITTLEWORTH LANE, TOUCHWOOD, PARTRIDGE GREEN

Approximate Gross Internal Area = 238.50 sq m / 2567.19 sq ft
Illustration for identification purposes only, measurements are approximate, not to scale.



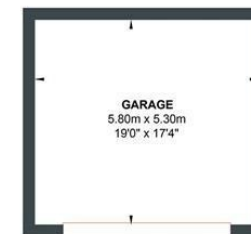
GROUND FLOOR

Approximate Floor Area
1842.88 sq ft
(171.21 sq m)



OUTBUILDING

Approximate Floor Area
393.42 sq ft
(36.55 sq m)



GARAGE

Approximate Floor Area
330.88 sq ft
(30.74 sq m)



