

# MICHAEL CLARK

RESIDENTIAL



## 4 Lodge Road

, Brightlingsea, CO7 0JQ

£325,000

THREE BEDROOMS \* DRIVEWAY \* KITCHEN DINER \*  
LOUNGE WITH BAY WINDOW \* EN-SUITE \* ENCLOSED  
GARDEN \* WELL PRESENTED \* CLOSE TO LOCAL  
SCHOOLS

- THREE BEDROOMS
- EN-SUITE SHOWER ROOM
- ENCLOSED GARDEN
- OFF ROAD PARKING
- WELL PRESENTED THROUGHOUT
- LOUNGE WITH BAY WINDOW
- GROUND FLOOR CLOAKROOM
- KITCHEN DINER

### Viewing

Please contact us on 01206 584520 if you wish to arrange a viewing appointment for this property or require further information.



3



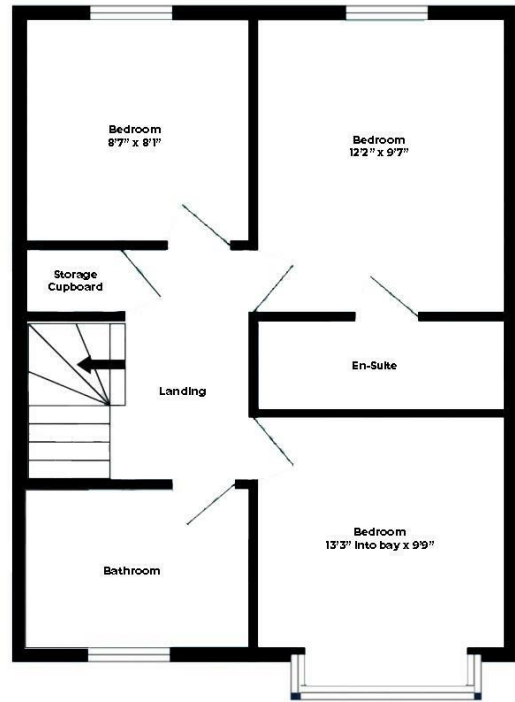
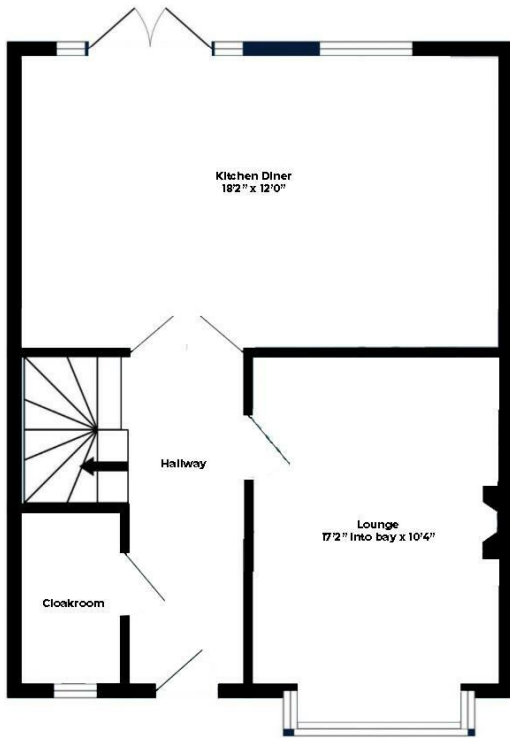
2



1



C



While every attempt has been made to ensure accuracy, all measurements are approximate, not to scale.  
This floorplan is for illustrative purposes only.



These particulars, whilst believed to be accurate are set out as a general outline only for guidance and do not constitute any part of an offer or contract. Intending purchasers should not rely on them as statements of representation of fact, but must satisfy themselves by inspection or otherwise as to their accuracy. No person in this firm's employment has the authority to make or give any representation or warranty in respect of the property.

Southgate House Plough Road, Great Bentley, Essex, CO7 8LG  
t: 01206 584520 e: michael@michaelclarkresidential.co.uk

[www.michaelclarkresidential.co.uk](http://www.michaelclarkresidential.co.uk)