

MICHAEL CLARK

RESIDENTIAL



25 Church Street

, Harwich, CO12 3EA

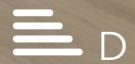
GUIDE PRICE: £375,000 - £390,000

OLD HARWICH TOWN * FOUR BEDROOMS *
BEAUTIFULLY PRESENTED * ENCLOSED COURTYARD
GARDEN * SPACIOUS LOUNGE * OPEN PLAN KITCHEN
DINER * UTILITY ROOM

- BEAUTIFULLY PRESENTED THROUGHOUT
- ENCLOSED COURTYARD GARDEN
- SPACIOUS KITCHEN DINER
- UTILITY ROOM
- MODERN BATHROOM
- SITUATED WITHIN OLD HARWICH TOWN
- GENEROUS SIZE LOUNGE
- GUIDE PRICE: £375,000 - £390,000

Viewing

Please contact us on 01206 584520 if you wish to arrange a viewing appointment for this property or require further information.



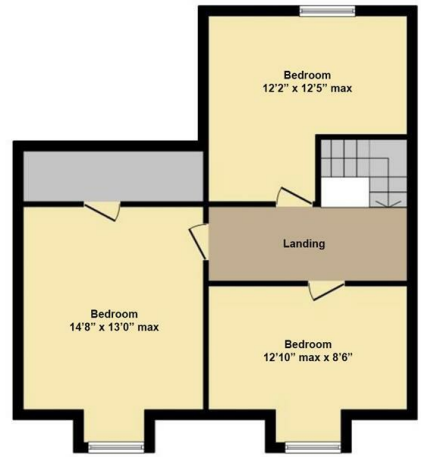
GROUND FLOOR



FIRST FLOOR



SECOND FLOOR



While every attempt has been made to ensure accuracy, all measurements are approximate, not to scale. This floorplan is for illustrative purposes only.



These particulars, whilst believed to be accurate are set out as a general outline only for guidance and do not constitute any part of an offer or contract. Intending purchasers should not rely on them as statements of representation of fact, but must satisfy themselves by inspection or otherwise as to their accuracy. No person in this firm's employment has the authority to make or give any representation or warranty in respect of the property.

Southgate House Plough Road, Great Bentley, Essex, CO7 8LG
 t: 01206 584520 e: michael@michaelclarkresidential.co.uk

www.michaelclarkresidential.co.uk