

MICHAEL CLARK

RESIDENTIAL



50 Mersey Road

, Ipswich, IP3 0QN

£280,000

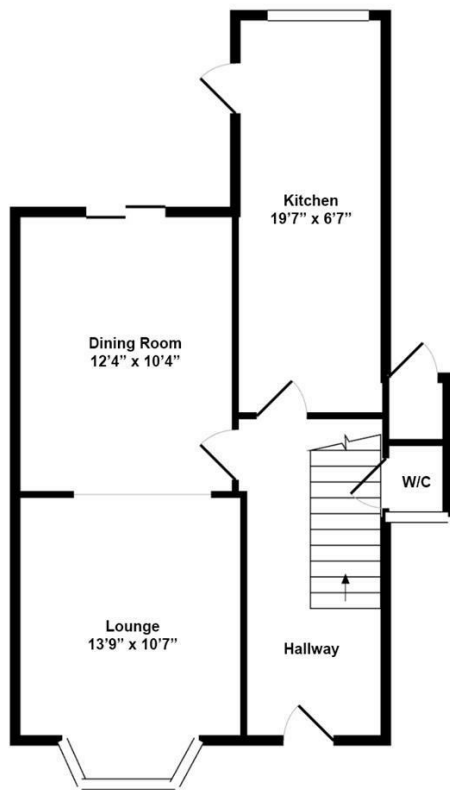
THREE BEDROOMS * BAY FRONTED * GARAGE & DRIVEWAY * LOUNGE DINER * LARGE GARDEN * CLOAKROOM * SPACIOUS KITCHEN

- THREE BEDROOMS
- GENEROUS SIZE KITCHEN
- GROUND FLOOR CLOAKROOM
- GARAGE & DRIVEWAY
- SPACIOUS LOUNGE
- FIRST FLOOR BATHROOM
- SOUGHT AFTER LOCATION

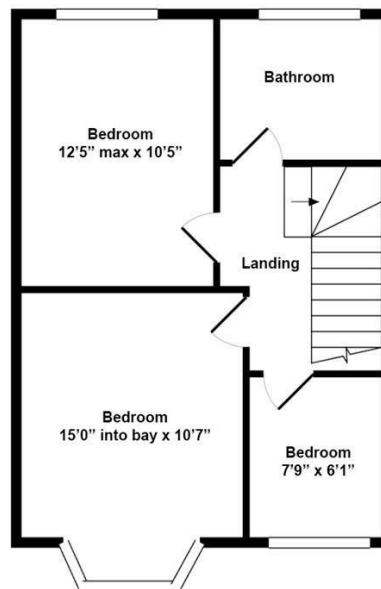
Viewing

Please contact us on 01206 584520 if you wish to arrange a viewing appointment for this property or require further information.



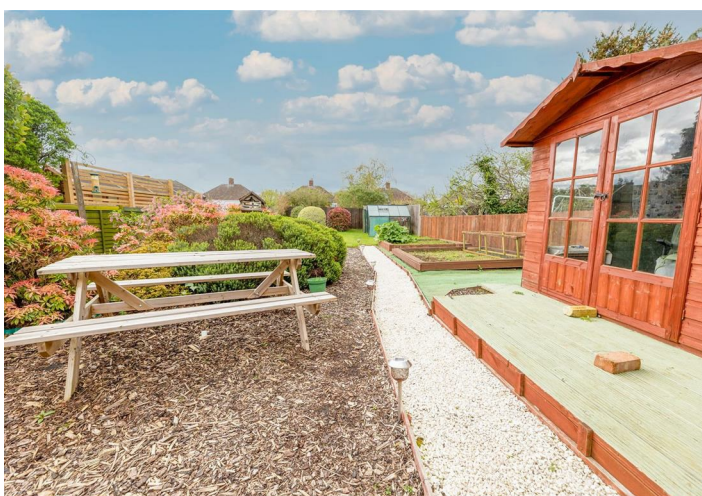


GROUND FLOOR



FIRST FLOOR

While every attempt has been made to ensure accuracy, all measurements are approximate, not to scale. This floorplan is for illustrative purposes only.



These particulars, whilst believed to be accurate are set out as a general outline only for guidance and do not constitute any part of an offer or contract. Intending purchasers should not rely on them as statements of representation of fact, but must satisfy themselves by inspection or otherwise as to their accuracy. No person in this firm's employment has the authority to make or give any representation or warranty in respect of the property.