



Oak Farm Meadow | 18 Acorn Way | Stowupland | IP14 4FG

Asking Price £270,000

**FAULKNER MADDEN**

FM Residential | SO Moves



## Key features

- Semi-Detached House
- Electric Car Charging Point
- Extended Garden Patio Area
- 3 Years Old
- Remainder of NHBC Warranty
- 1 Mile from Stowmarket
- Award Winning Development
- Energy Efficient by Design

## Description

Modern & Energy-Efficient 2-Bedroom Home in Award-Winning Oak Farm Meadow

Discover contemporary living in this beautifully appointed 2-bedroom, 2-bathroom semi-detached home, situated in the sought-after Oak Farm Meadow development by Linden Homes in Stowupland. Designed with sustainability in mind, this award-winning development features an on-site community orchard and a picturesque wildflower meadow, offering a perfect blend of modern convenience and natural beauty.

Step inside to find a thoughtfully designed interior with wooden flooring and plush carpets, creating a warm and stylish ambiance. The open-plan living space flows seamlessly into a well-equipped kitchen, while the extended paved patio and turfed garden provide an ideal outdoor retreat. A garden shed offers additional storage, ensuring a clutter-free home.

Practicality meets eco-conscious living with off-street parking for two cars and an electric vehicle charging point. Located just one mile from Stowmarket, residents enjoy easy access to an array of independent shops, restaurants, and amenities, while Stowupland itself offers a strong sense of community. Families will appreciate the excellent choice of pre-schools, primary, and secondary schools nearby, making this home a fantastic option for all generations.

Embrace modern, sustainable living in this energy-efficient and beautifully upgraded home—your perfect retreat in the heart of Suffolk.

## Directions



Oak Farm Meadow is an exciting new development, conveniently situated off the B1115, at the southern end of Thorney Green Road, in the mid Suffolk village of Stowupland. Within walking distance of a range of village amenities, these include the parish church, village hall, shops and two pubs. Perfect for families, a primary school, secondary school and sports centre are all within easy reach of Oak Farm Meadow, while Stowmarket is less than a mile away, offering all the charm of a traditional market town and further opportunities for shopping, entertainment and leisure.

With its surrounding countryside of open farmland, charming villages, fine heritage sites and rural visitor attractions, you'll be spoilt for choice for great family days out. With excellent travel links,

Oak Farm Meadow is little over a mile from the A14, allowing stress-free travel by road to Bury St Edmunds, Newmarket and Cambridge,

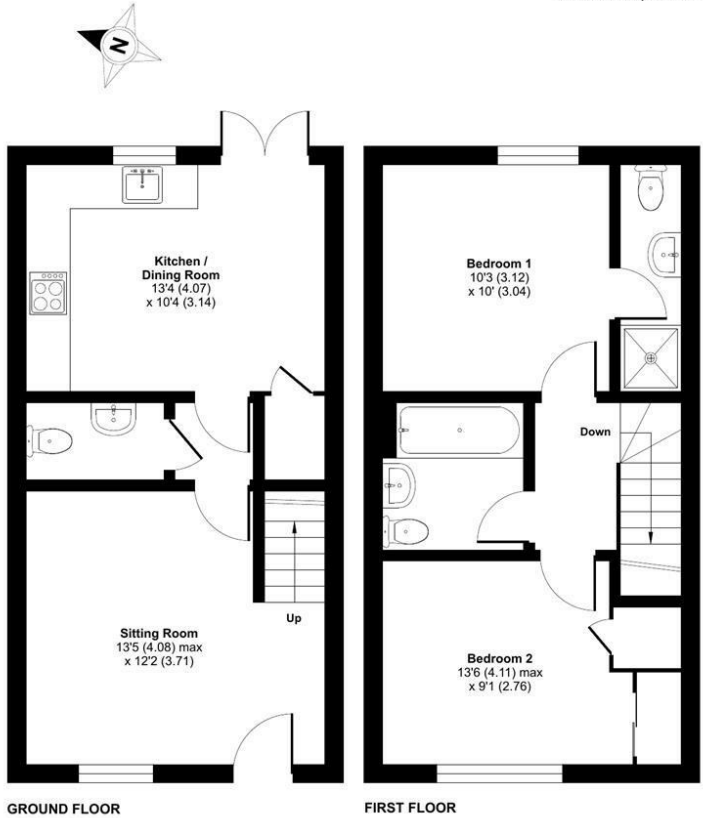
while Suffolk's county town of Ipswich is only 12 miles away, also via the A14. By train, Stowmarket station is less than a mile away and provides regular direct rail services to Ipswich (12 mins), Norwich (32 mins) and London Liverpool Street (84 mins).



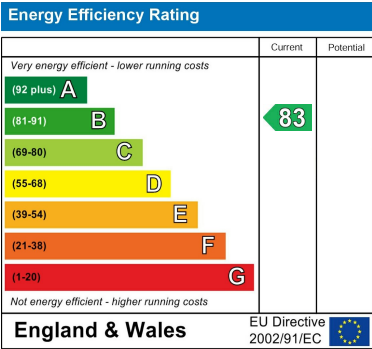


Acorn Way, Stowupland, Stowmarket, IP14

Approximate Area = 710 sq ft / 65.9 sq m  
For identification only - Not to scale



Floor plan produced in accordance with RICS Property Measurement Standards incorporating International Property Measurement Standards (IPMS Residential). © nichecom 2025. Produced for So Moves. REF: 1247948



FAULKNER MADDEN

FM Residential | SO Moves

Ealing Cross  
85 Uxbridge Road  
Ealing  
London  
W5 5BW

02045 519027

contact@somoves.co.uk  
somoves.co.uk