



PEAR
PROPERTIES

Ashdown Road, Worthing
Worthing

£725 pcm



Ashdown Road

Worthing

Modern part-furnished room to rent near Worthing town centre and train station including private en-suite shower room, communal kitchen / dining area, fixed bills at an additional £50pcm.

Council Tax band: F

- Fixed Bills for Additional £50 PCM
- Modern Room To Rent
- Part Furnished
- Communal Kitchen / Dining Area With Appliances
- No Deposit Option Available
- Close To Worthing Town Centre & Train Station
- Private Modern En-Suite Shower Room
- Communal Garden



Room

** Please note the photos are of another room in the house share and are not of the room that is available currently ** Modern room with bed, mattress, wardrobe and chest of drawers.

Private En-Suite Shower Room

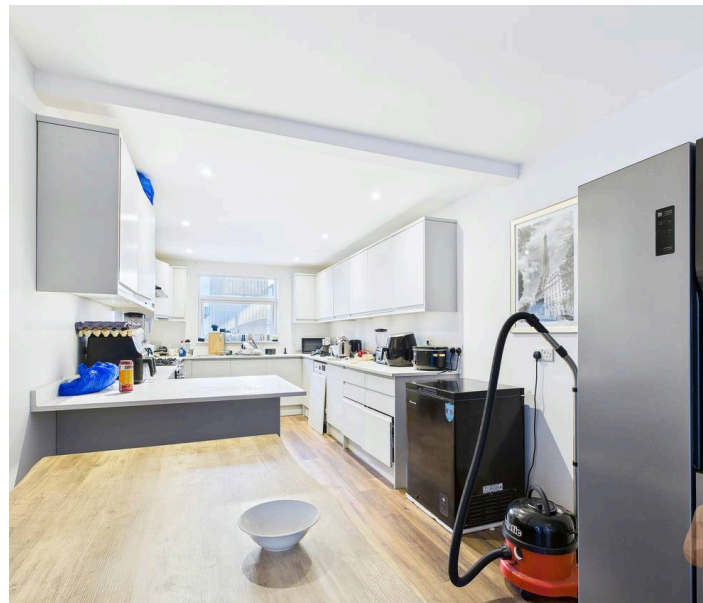
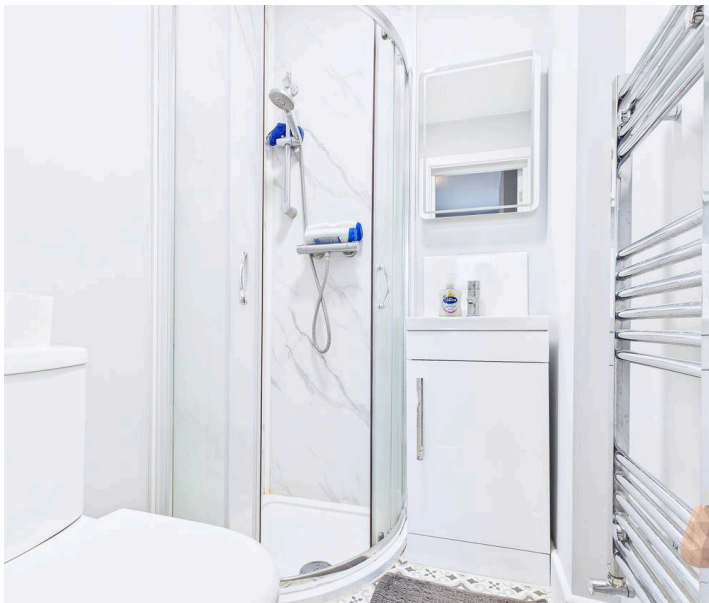
Modern en-suite comprising shower cubicle, WC, vanity unit, illuminated mirror and heated towel rail.

Communal Kitchen / Dining Area

Communal kitchen/dining area, with a range of wall and base units and appliances.

Communal Garden

Communal garden.





Pear Properties

20 Crabtree Lane, Lancing - BN15 9QP

01903 947337 · hello@pearproperties.uk · pearproperties.uk