



PEAR
PROPERTIES

Kingsland Road, Worthing
Worthing

Guide Price £250,000



Kingsland Road, Worthing

Stylish ground floor flat with a double bedroom, modern kitchen, loft storage, share of freehold, maintenance paid as and when, allocated parking.

Council Tax band: A

Tenure: Share of Freehold

EPC Energy Efficiency Rating: C

EPC Environmental Impact Rating: C

- Ground Floor Apartment
- One Spacious Double Bedroom
- Bright Living Room With Herringbone Flooring
- Modern Fitted Kitchen
- Two Loft Storage Spaces
- Allocated Parking Space
- Share Of Freehold With Maintenance Paid As And When
- Excellently Presented Throughout
- Please Take A Look At Our Virtual Tour & Walk Through Video
- Quiet Residential Position



Living Room

15' 5" x 11' 4" (4.70m x 3.46m)

Spacious and bright living room with Herringbone Flooring.

Kitchen

7' 8" x 10' 10" (2.34m x 3.30m)

Modern fitted kitchen with a range of base units and space for appliances.

Bedroom

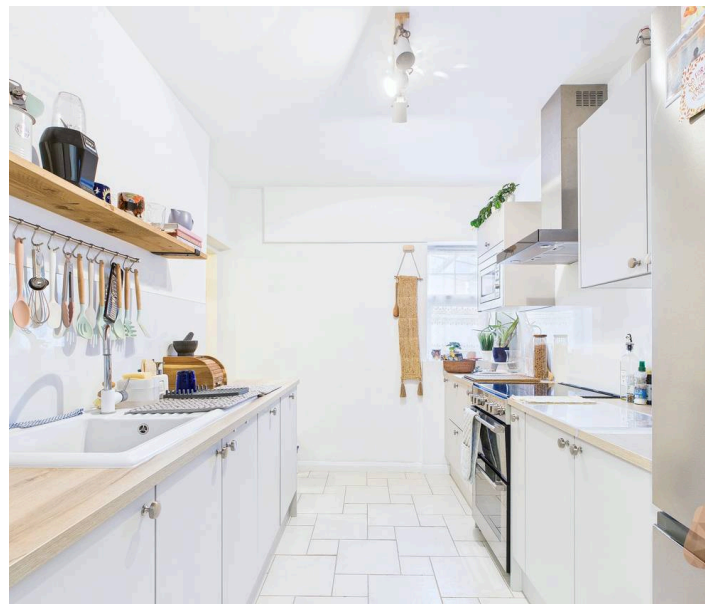
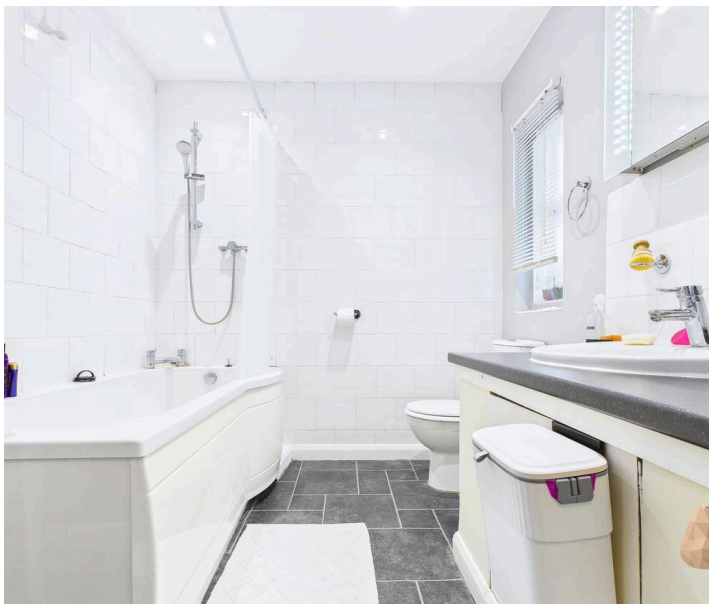
15' 8" x 10' 3" (4.77m x 3.12m)

Spacious double bedroom with Herringbone Flooring and access to the loft space

Bathroom

7' 2" x 7' 4" (2.18m x 2.23m)

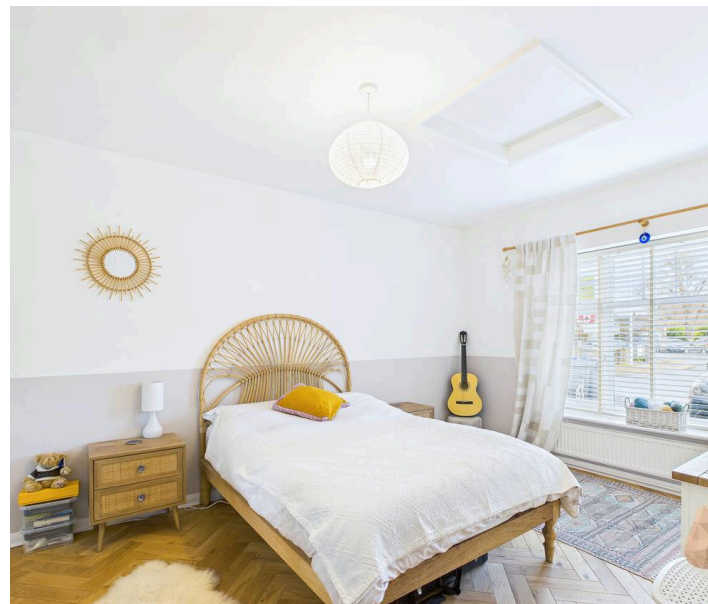
Partially tiled bathroom comprising bath with over bath shower, WC and hand wash basin.



OFF STREET

ALLOCATED PARKING

DRIVEWAY





Approximate total area⁽¹⁾

45.9 m²

494 ft²

(1) Excluding balconies and terraces

Calculations reference the RICS IPMS 3C standard. Measurements are approximate and not to scale. This floor plan is intended for illustration only.

GIRAFFE360





Pear Properties

20 Crabtree Lane, Lancing - BN15 9QP

01903 947337 · hello@pearproperties.uk · pearproperties.uk