

### Experience, Knowledge, Drive and Service

We are an Independent Estate Agency with a great wealth of experience. Covering Chessington, North Cheam, Morden, Worcester Park, Stoneleigh, West Ewell and Epsom, the partners have well over 160 years of experience in the industry, many of which have been spent working locally. We feel that we bring many great characteristics to the marketplace, in particular the 'know how' required to deliver excellent results, the drive required to work as hard as it takes for our customers and a real desire to deliver superb levels of service. We know that moving house, or indeed letting one, can be complicated and stressful. We also respect that in many cases we are dealing with your home and all the emotional ties that go with it. We understand and will always do what it takes to make matters run as smoothly as possible.

We offer a comprehensive list of services including Sales, Lettings and Mortgage Advice. Whatever your circumstances and plans, please contact us, we will be only too happy to help and all of our advice and guidance is free. All of our valuations and lettings appraisals are also free and we operate a no sale/let - no fee policy

- Knowledgeable team with over 160 years experience
- All viewings accompanied
- No upfront fees and no sale/let - no fee policy
- Superb internet coverage with free enhanced marketing packages
- Computer linked offices
- Floorplan and video tours on most Property Details
- Tailored service levels for Landlords
- Agreed sales fully managed through to completion
- Always competitive on fees

### Free Valuations

If you are considering selling or letting your property we can carry out a free, no obligation valuation and market appraisal. Rest assured that with our unrivalled experience and local knowledge you will be given expert information, advice and guidance.

### Mortgage Advice

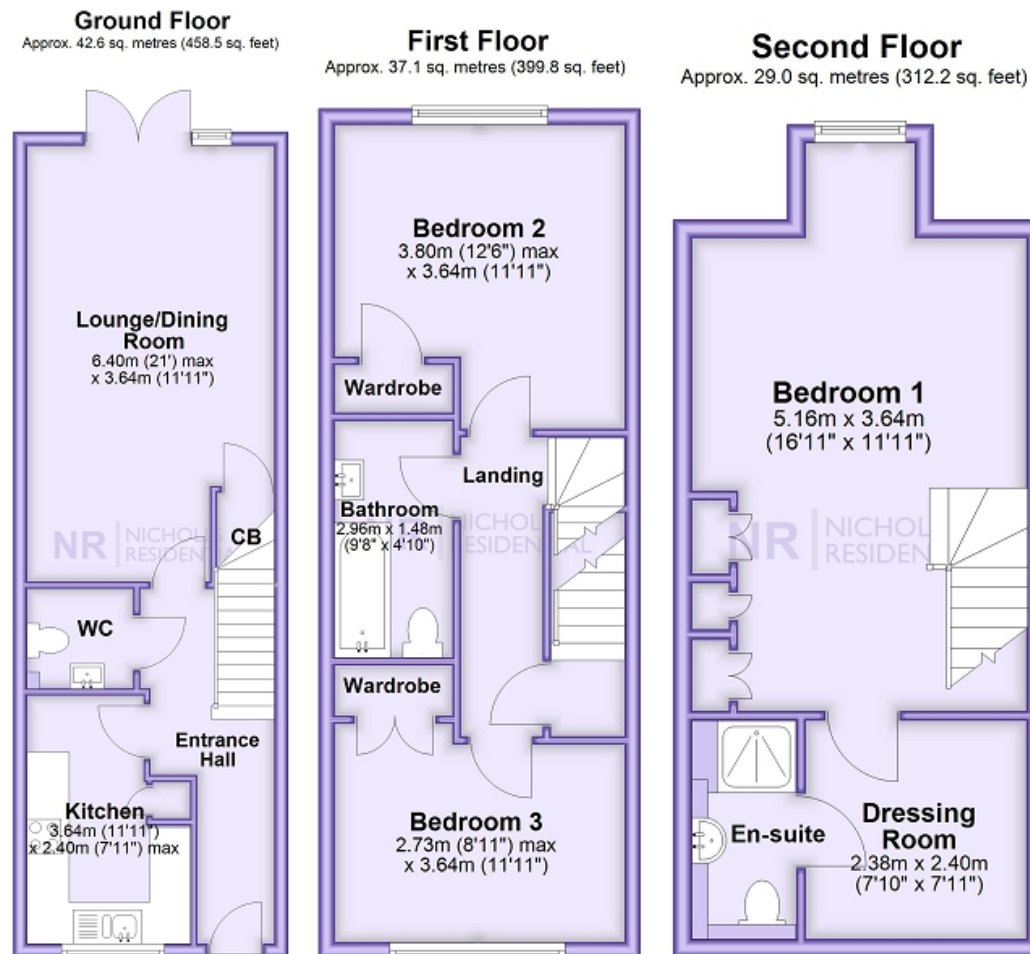
We have a free Mortgage Service available from our Independent Financial Adviser. We can advise on products from the whole of the mortgage market and of course the whole process is managed from application to completion including regular progress updates for all our clients.

## 52 Cuddington Avenue, Worcester Park, Surrey

- Three Sizeable Bedrooms
- Terrace House
- Ground Floor WC
- Modern Kitchen
- Living Room
- Parking Space & Garage
- Popular Location
- EPC Rating C70

NR | NICHOLLS RESIDENTIAL  
**£570,000**





Nicholls Residential are pleased to offer this three bedroom terrace house featuring accommodation over three floors. The accommodation on the ground floor comprises entrance hall, contemporary fitted kitchen, downstairs WC and living room with doors to a rear garden. On the first floor there is a family bathroom and two sizeable bedrooms both with built in wardrobes. The main bedroom is on the top floor and has a dressing room and en-suite shower room. Outside the rear garden is laid to a paved patio with artificial grass. There is a parking space to the rear which is accessed by electric gates and there is also a garage. The property is situated in a popular location with access for both Stoneleigh and Worcester Park towns with their railway stations, schools and shopping amenities.

Agents note : There is a service charge for communal areas at the development.



Energy Efficiency Rating		
	Current	Potential
Very energy efficient - lower running costs		
(92+) <b>A</b>		
(81-91) <b>B</b>		84
(69-80) <b>C</b>	70	
(55-68) <b>D</b>		
(39-54) <b>E</b>		
(21-38) <b>F</b>		
(1-20) <b>G</b>		
Not energy efficient - higher running costs		
England, Scotland & Wales EU Directive 2002/91/EC		

The energy efficiency rating is a measure of the overall efficiency of a home. The higher the rating the more energy efficient the home is and the lower the fuel bills will be.



This floor plan and related floor plans are for layout guidance only. Not drawn to scale unless stated. All measurements are approximate. Whilst every care is taken in the preparation of this plan, please check all dimensions before making any decision reliant upon them.